



DIRECT STEAM FULL JACKET 80 GALLON KETTLE



MODEL	CAPACITY	
DL-80F	80 Gallon	303 Liter
DP-80F	80 Gallon	303 Liter

SPECIFICATIONS:

CROWN Model _____, direct steam connected full jacket quad leg or pedestal kettle. A double wall kettle interior shall form a steam jacket around the kettle. The bottom of the kettle shall be of hemispherical design for superior heat circulation. Construction shall be all welded satin finish stainless steel type 304. The kettle interior shall be stainless steel type 316. Convenience features shall include a 2" (50 mm) sanitary draw-off valve with perforated strainer and a hinged flat split stainless steel cover. Faucet bracket standard.

The DL-80F kettle shall be mounted on four stainless steel tubular legs. Each leg shall be fitted with a 4 hole adjustable flanged foot for securing to the floor. The DP 80F kettle shall be mounted on a pedestal base and shall have four 7/16" (11mm) holes evenly spaced for securing the unit to the floor.

OPERATION SHALL BE BY:

Direct steam at a minimum of 5 PSI (34 KpA) and a maximum of 25 psi (172 kPa) is required.

OPTIONAL ITEMS AT EXTRA COST:

- ☐ 35 psi (241 kPa) high pressure operation for higher cooking temperature (HP-35)
- ☐ 3" (76 mm) draw-off valve (TVS-3)
- ☐ Etched gallon markings (GM-80F)
- ☐ Etched litre markings (LM-80F)
- ☐ Correctional package
- ☐ Pressure reducing valve (PRV-2)

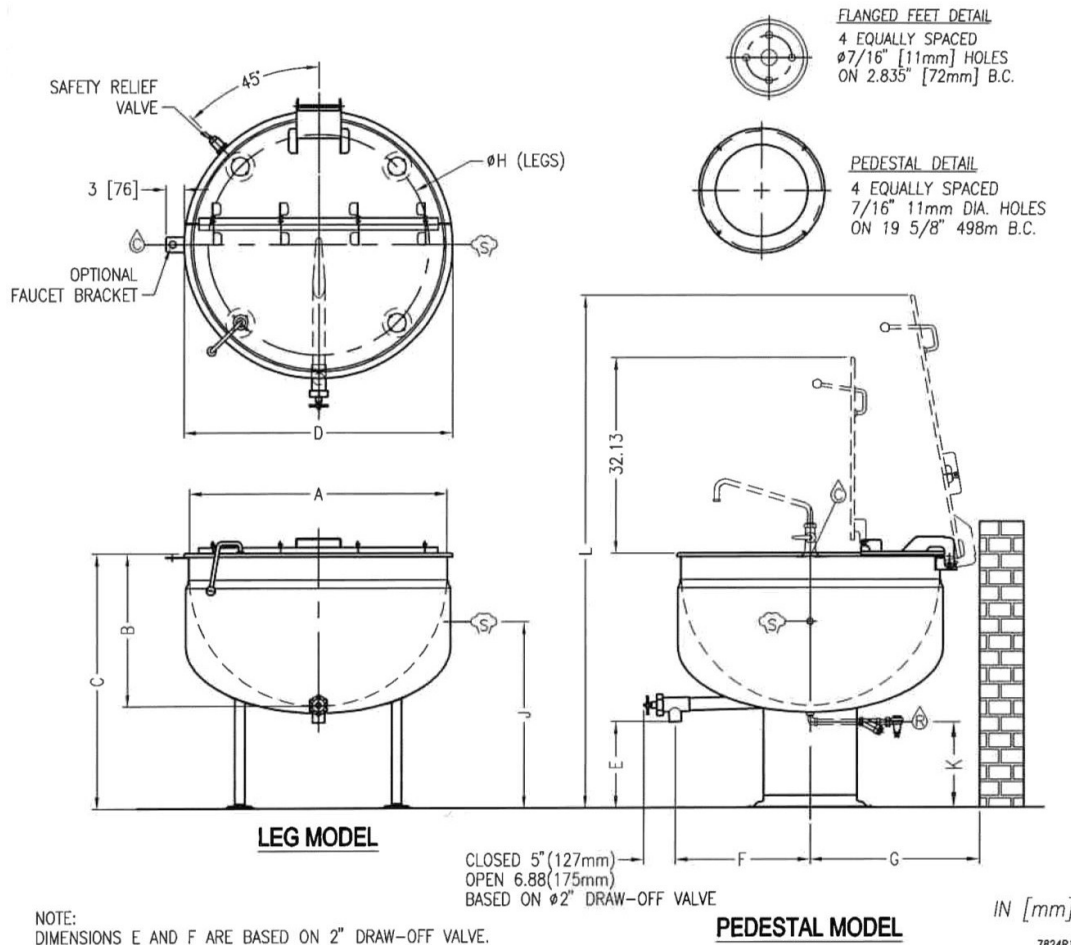
ACCESSORIES:

- ☐ Triple basket assembly (TBA- 80F))
- ☐ Steam trap assembly, consisting of steam trap, steam control valve, check valve and line strainer (STA-1)
- ☐ Solid disc for draw-off valve (TSS-)
- ☐ Strainer hook (SH)
- ☐ Contoured measuring strip (CMS-)
- ☐ Draw-off valve hose kit with 8' (2.44m) hose (DVHK-)
- ☐ Single pantry faucet with 12" (305mm) swing spout (SF-12)
- ☐ Double pantry faucet with 12" (305mm) swing spout (DF-12)
- ☐ Single pantry kettle filler (SP-KF)
- ☐ Double pantry kettle filler (DP-KF)
- ☐ Kettle heat shield (KHS-)



Models: ☐DL-80F ☐DP-80F

MODEL	SHIPPING WEIGHT	MINIMUM CLEAR- ANCE	
		SIDES	3 [76]
DL-80F	380 lbs. [172 kg]	BACK	.5 [13]



DIMENSIONS

MODEL	CAPACITY	UNITS	A	B	C	D	E	F	G	H	J	K	L
D(L,P)-80F	80 gallons (303 liters)	in (mm)	42" (1067)	23.75" (603)	40.5" (1029)	43.88" (1114)	14.13" (359)	22" (559)	27.5" (699)	36.13" (918)	35.5" (902)	14" (356)	82.88" (2105)
										NONE			

SERVICE CONNECTIONS

- STEAM SUPPLY: 3/4" IPS (19 mm)
- CONDENSATE RETURN: 1/2" IPS (13 mm)
- COLD WATER: 3/8" (10 mm) tubing to faucet (optional)

**INTENDED FOR COMMERCIAL USE ONLY.
NOT FOR HOUSEHOLD USE.**



70 Oakdale Road, Toronto ON, Canada M3N 1V9
(919) 762-1000 www.crownsteamgroup.com