

"PB-DIIB-CP" DROP-IN ICE BIN w/Cold Plate

FEATURES:

- 10" Deep Ice Bin
- Insulated Basin
- 1/2" Raised Lip Around Top Of Ice Bin
- Includes Stainless Steel Sliding Lid
- Includes 10 Circuit Cold Plate With 1/2"x5" MPT Nipple

SPECIFICATIONS:

- Ice Bins Are TIG Welded, Exposed Welds Are Polished To Match Adjacent Surface
- Deck: 14GA Type 300 Stainless Steel
- Base: 18GA Type 300 Stainless Steel

CERTIFICATIONS:



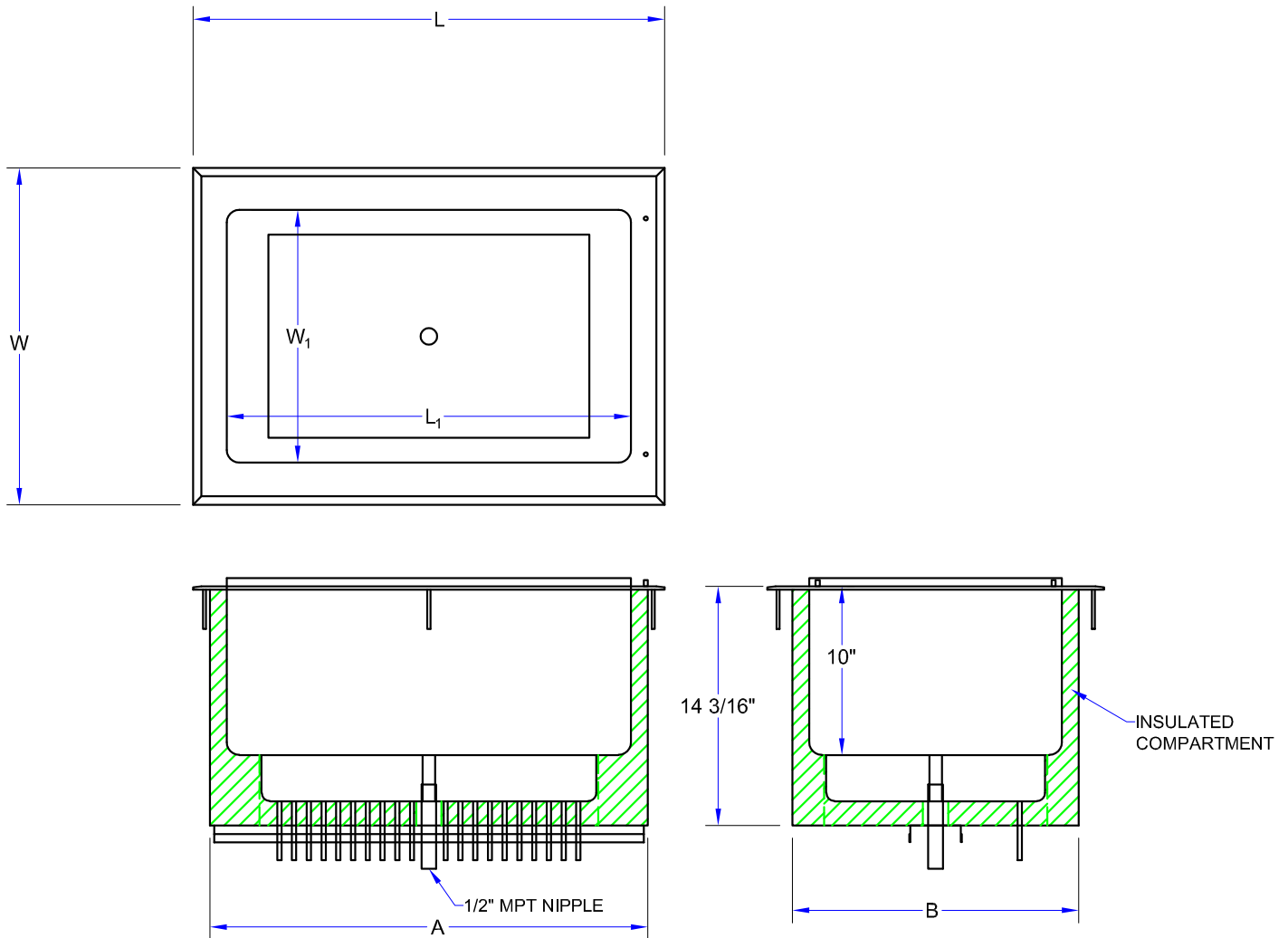
PB-DIIB2820-CP10

"PB-DIIB-CP" DROP-IN ICE BIN WITH COLD PLATE

MODEL	OVERALL SIZE (L X W)	INTERNAL LENGTH (L')	INTERNAL WIDTH (W')	CUTOUT LENGTH (A)	CUTOUT WIDTH (B)	ICE CAP. (LBS)	WEIGHT (LBS)
PB-DIIB2820CP10	28"x20"	24"	15"	26"	17"	77	120
PB-DIIB3420CP10	34"x20"	30"	15"	32"	17"	96	127

ALL DIMENSIONS ARE TYPICAL. TOLERANCE +/- .500". JOHN BOOS & CO. RESERVES THE RIGHT TO CHANGE SPECIFICATIONS WITHOUT NOTICE.

DETAILED SPECIFICATIONS



"PB-DIIB-CP" DROP-IN ICE BIN WITH COLD PLATE

MODEL	OVERALL SIZE (L X W)	INTERNAL LENGTH (L')	INTERNAL WIDTH (W')	CUTOUT LENGTH (A)	CUTOUT WIDTH (B)	ICE CAP. (LBS)	WEIGHT (LBS)
PB-DIIB2820CP10	28"x20"	24"	15"	26"	17"	77	120
PB-DIIB3420CP10	34"x20"	30"	15"	32"	17"	96	127

ALL DIMENSIONS ARE TYPICAL. TOLERANCE +/- .500". JOHN BOOS & CO. RESERVES THE RIGHT TO CHANGE SPECIFICATIONS WITHOUT NOTICE.