

# EASYDIAL REMOTE MOUNTED CONTROLS FOR HORIZONTAL DIRECT STEAM MIXER KETTLES

Project \_\_\_\_\_  
 Item \_\_\_\_\_  
 Quantity \_\_\_\_\_  
 FCSI Section 11400 \_\_\_\_\_  
 Approved \_\_\_\_\_  
 Date \_\_\_\_\_

## Models

- HASECH
- HASECHW (WALL MOUNT)



## Short Form Specifics

Shall be Cleveland Model HASECH(W), COOK CHILL CONTROL Center with single controls as follows; Solid State Temperature Control with Digital Read-Out; EasyDial Data Logger with USB Port; Controls for Automatic and Manual Water Cooling; Simmer Control; Automatic Water Meter with accumulative "add on" button and digital readout; Variable Mixer Speed Control and Mixer Start/Stop Button.

## Standard Features - Single Controls

- Floor or wall mounting models (please specify)
- Variable mixer speed control
- Mixer start/stop button
- Solid state temperature control with digital read-out
- EasyDial data logger with USB port
- Control for automatic and manual steam
- Control for automatic and manual water cooling
- Simmer control for delicate products
- Automatic water meter with accumulative "add on" button and digital readout (for cold water only)
- All stainless steel construction
- U.L. Listed
- Accepted for use in U.S.D.A. Inspected Facilities

## Models

- HADECH
- HADECHW (WALL MOUNT)



## Short Form Specifications

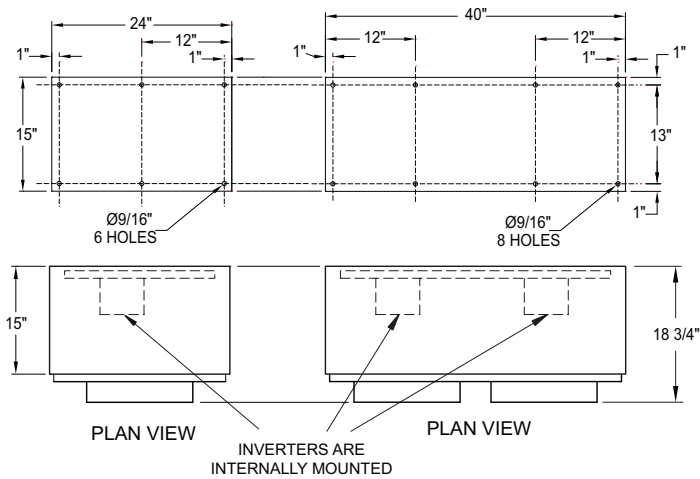
Shall be Cleveland Model HADGCH(W) , COOK CHILL CONTROL CENTER with individual controls for each mixer kettle; Solid State Temperature Controls with digital read-out; EasyDial Data Loggers with USB Ports; ; Automatic and Manual Water Cooling; Simmer Controls; Automatic Water Meters with accumulative "add on" button and digital readout; Variable Mixer Speed Control and Mixer Start/Stop Button.

## Standard Features - Dual Controls

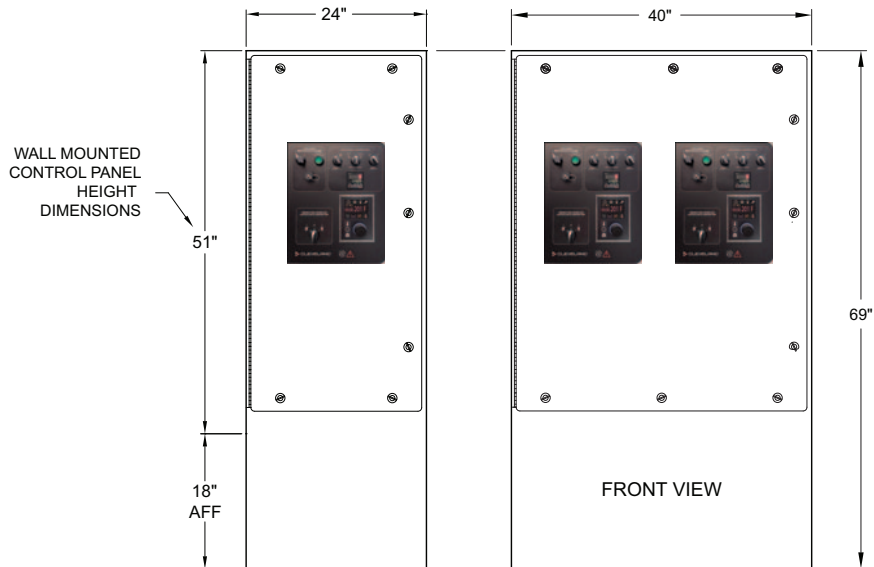
- Floor or wall mounting models (please specify)
- Individual controls for each kettle
- Variable mixer speed controls
- Mixer start/stop buttons
- Solid state temperature controls with digital read-out
- EasyDial data loggers with USB ports
- Controls for automatic and manual steam
- Controls for automatic and manual water cooling
- Simmer controls for delicate products
- Two (2) automatic water meters with accumulative "add on" button and digital readout (for cold water only)
- All stainless steel construction
- U.L. Listed
- Accepted for use in U.S.D.A. Inspected Facilities

## Options & Accessories - Single & Dual Controls

- Lockable cover(s) for controls
- Water meter(s) for hot and cold kettle fill
- 208/3/60; 240/3/60 and 460/3/60 voltages
- 380/3/50 or 575/3/60 export voltages



MINIMUM CLEARANCE	
FRONT	36"
SIDE	12"
REAR	0"



Model	Description	Electrical 208V3PH/60HZ	Shipping Weight (Approximate)	Crate Size W x L x H
<b>Floor Models</b>				
HASECH	(Horizontal Mixers, Chart Recorder)	Amperage based on kettle size	650 lbs.	45" x 46" x 76"
HASETS	(Horizontal Mixers, 15" Touch Screen Controls)	Amperage based on kettle size	650 lbs.	45" x 46" x 76"
<b>Wall Mount Models:</b>				
HASECHW	(Horizontal Mixers, Chart Recorder)	Amperage based on kettle size	630 lbs.	61" x 31" x 33"
HASETSW	(Incline Mixers, 15" Touch Screen Controls)	Amperage based on kettle size	630 lbs.	61" x 31" x 33"
<b>Floor Models</b>				
HADECH	(Horizontal Mixers, Chart Recorder)	Amperage based on kettle size	800 lbs.	45" x 46" x 76"
<b>Wall Mount Models:</b>				
HASDECHW	(Horizontal Mixers, Chart Recorder)	Amperage based on kettle size	750 lbs.	61" x 31" x 33"

**Notes:**

The depth and width dimensions are the same for both the floor mount and wall mount panels.

Electrical power to and from control panel -

- Contractor must cut entry hole.
- Top or bottom power entry recommended.
- Must use proper connections to maintain U.L. listing.

Cleveland Range reserves right of design improvement or modification, as warranted.

(NOT TO SCALE)