



Founded in 1946

Project: \_\_\_\_\_

Items: \_\_\_\_\_

Quantity: \_\_\_\_\_

Approval: \_\_\_\_\_

Date: \_\_\_\_\_

## Vending Merchandiser Kiosk K-12 Grab & Go Carts



Winholt's adjustable mobile serving cart has a reach-in, grab and go design with an adjustable height designed for students from kindergarten to twelfth grade. Use this all-in-one station to distribute fresh fruit, cold drinks, snack bags and more!

SS-BC-2748H29-INSULIB-TOS

### Features:

- Constructed of all welded stainless steel, specifically engineered to effectively support magnetic branding and logos
- (3) WHPL-5K Polypropylene tubs provided
- Insulated 8" deep removable ice bin with 1" recessed drain valve. Bin holds (3) standard 12" x 20" pans (not included).
- 5" Adjustable over shelf rack with pin system for better sturdiness and evenness
- Over shelf rack is removable
- Removable stainless steel cover with end bumpers to prevent scratching
- Includes hook to hold cover in back of the unit when not in use.
- Ergonomic handle
- (4) Lower corner bumpers
- Maneuvers easily on polyurethane casters, (2) rigid and (2) swivel with brakes.



### Options:

- Model available with 18" folding shelf for extra counter space

### Benefits:

- Insulated design is perfect for school lunch and events that include cold pre-made foods such as sandwiches, fruit bowls, salads, and more.
- 29" Surface height is ideal for young students to view and select items.
- Adjustable over shelf allows for conforming to needs and surroundings
- Mobility allows for unit to move continuously throughout an event and casters lock to keep unit in place
- Stainless steel construction is sanitary and easy to clean
- Safely and efficiently transport product.

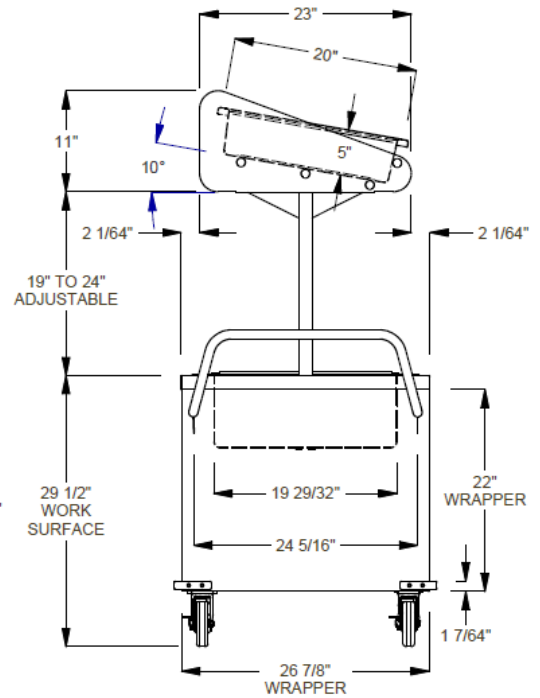
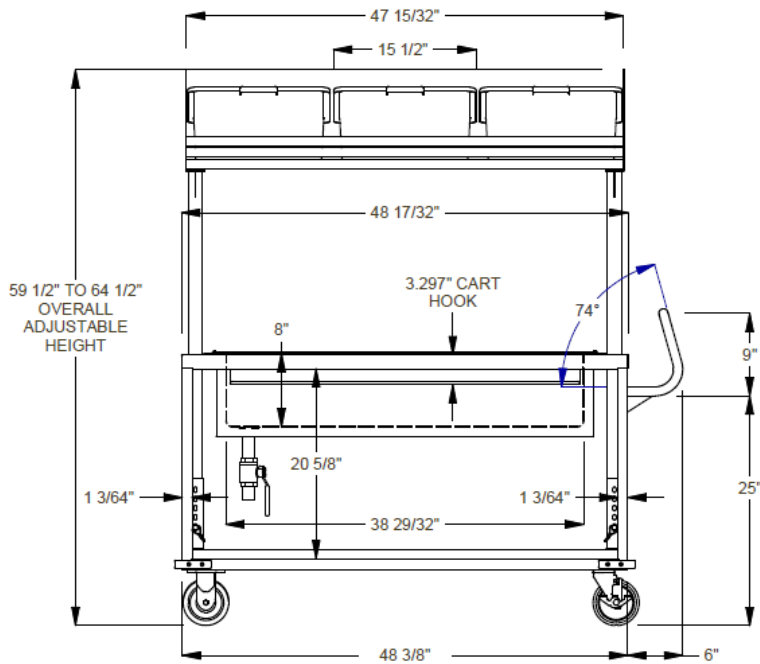
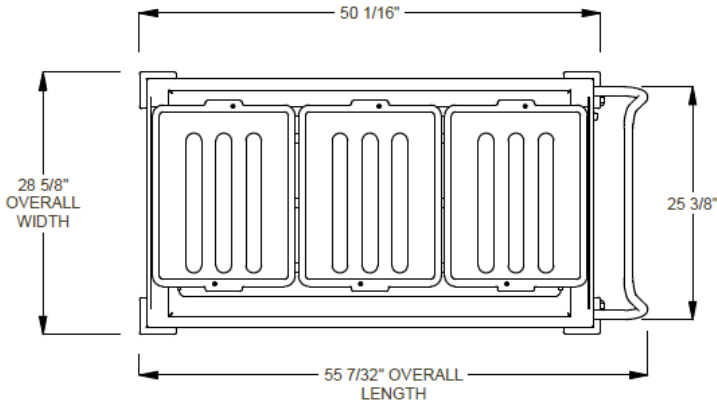
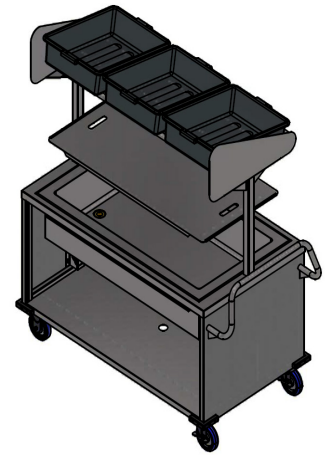


K-12 GRAB & GO CARTS



# Vending Merchandiser Kiosk K-12 Grab & Go Cart

Founded in 1946



| Model Number              | Order#  | Overall Dimensions |        |                   | Approx. Ship Wt |
|---------------------------|---------|--------------------|--------|-------------------|-----------------|
|                           |         | Width              | Length | Adjustable Height |                 |
| Tub Dimensions            |         |                    |        |                   |                 |
| SS-BC-2748H29-INSULIB-TOS | 1153542 | 28.6               | 55.2   | 59.5 - 64.5       | 222             |
| WHPL-5K                   | -       | 15.5               | 20     | 5                 | -               |

**Caster Information:**

- (2) 5" Swivel Polyurethane Casters with Brakes
- (2) 5" Rigid Polyurethane Casters

**Freight Class: 250**



In line with our policy to continually improve our products, Winholt reserves the right to change materials and specifications without notice.

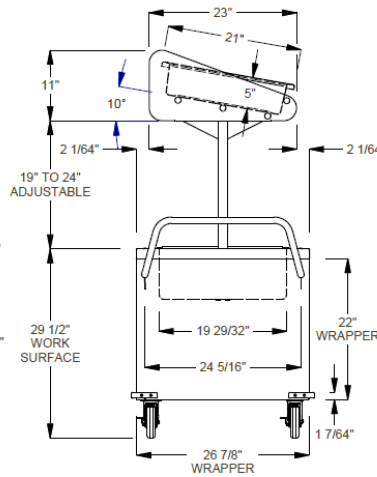
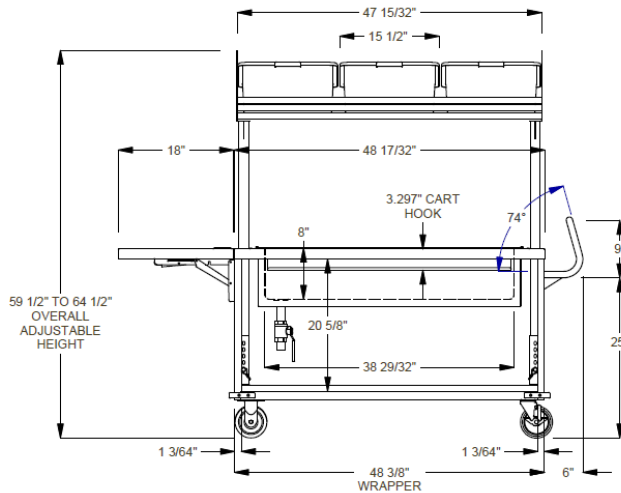
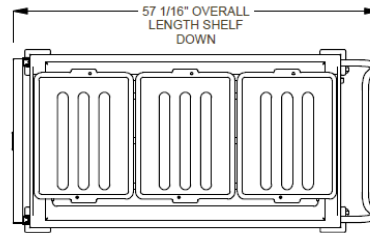
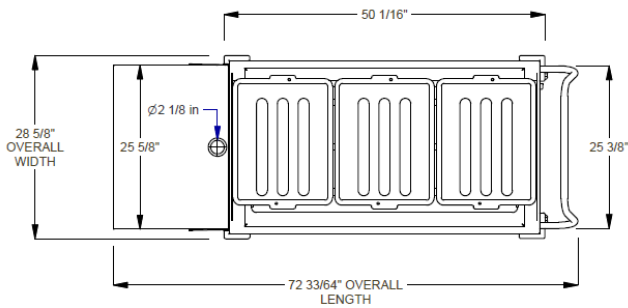
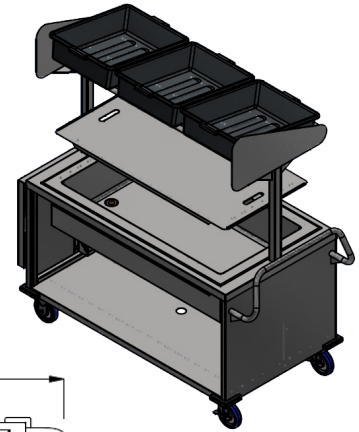


Founded in 1946

# Vending Merchandiser Kiosk K-12 Grab & Go Cart w/ Folding Shelf

K-12 GRAB & GO CARTS

Includes  
18" Folding Shelf



| Model Number                   | Order#  | Overall Dimensions |             |                        | Approx. Ship Wt (lb) |
|--------------------------------|---------|--------------------|-------------|------------------------|----------------------|
|                                |         | Width (in)         | Length (in) | Adjustable Height (in) |                      |
| SS-BC-2748H29-INSULIB-FS18-TOS | 1154835 | 28.6               | 72.5        | 59.5 - 64.5            | 230                  |
| Tub Dimensions                 |         |                    |             |                        |                      |
| WHPL-5K                        | -       | 15.5               | 20          | 5                      | -                    |

**Caster Information:**

- (2) 5" Swivel Polyurethane Casters with Brakes
- (2) 5" Rigid Polyurethane Casters

**Freight Class: 250**