



# GAS STATIONARY FULL JACKET STEAM KETTLE



MODEL	CAPACITY	
GL-60FE	60 Gallon	227 Liter

## OPERATION SHALL BE BY:

- ☐ Natural Gas
- ☐ L.P. Gas

for operation on 115 VAC, 1 phase, 50/60 Hz

## STANDARD FEATURES:

- Low water level cut-off and indicator.
- Pressure gauge.
- Temperature control.
- Safety relief valve.
- Integrally mounted controls.
- 2" (50 mm) draw-off valve
- Spring assist stainless steel cover
- Electronic ignition
- Water sight glass
- 100% safety gas shut-off control.
- 316 stainless steel liner

## OPTIONAL ITEMS AT EXTRA COST:

- ☐ 220 VAC, 1 phase, 50/60 Hz
- ☐ 3" (76 mm) draw-off valve with perforated strainer (TVS-3).
- ☐ Etched gallon markings (GM-).
- ☐ Etched litre markings (LM-).
- ☐ Correctional package.
- ☐ Draw-off valve hose kit (DVHK-2).

## ACCESSORIES:

- ☐ Tri-basket assembly (TBA-).
- ☐ Contoured measuring strip (CMS-).
- ☐ Strainer hook (SH).
- ☐ Solid disc for draw-off valve (TSS-).
- ☐ Single pantry faucet with swing spout (SF-12).
- ☐ Double pantry faucet with swing spout (DF-12).
- ☐ Single pantry faucet kettle filler (SP-KF-GK).
- ☐ Double pantry faucet kettle filler (DP-KF-GK).
- ☐ Draw-off valve drain cup with hose (DVDC-2).

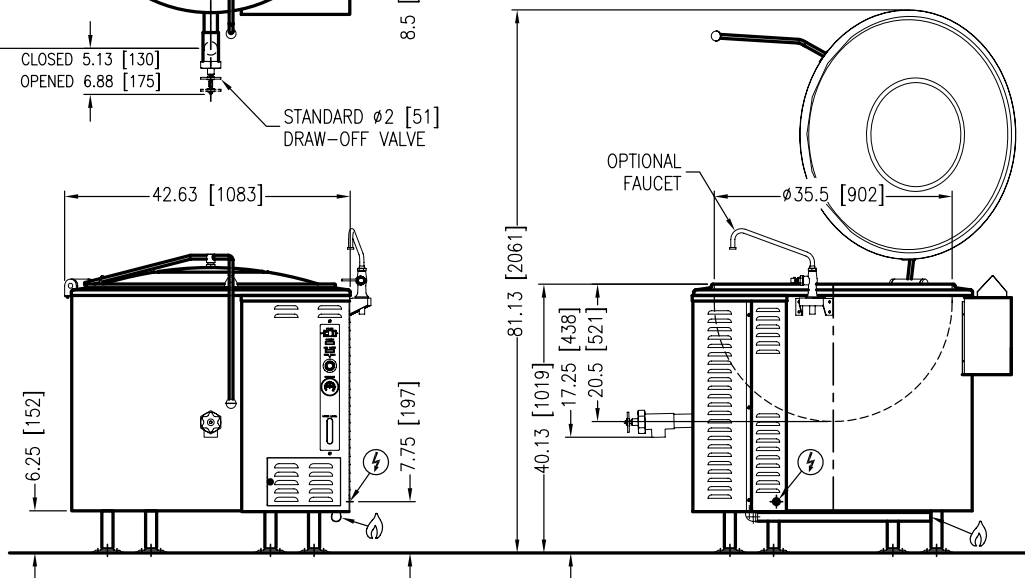
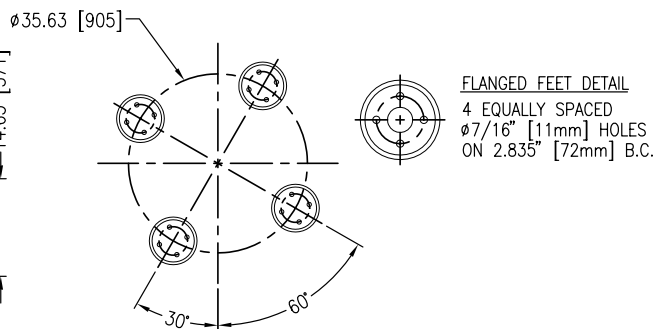
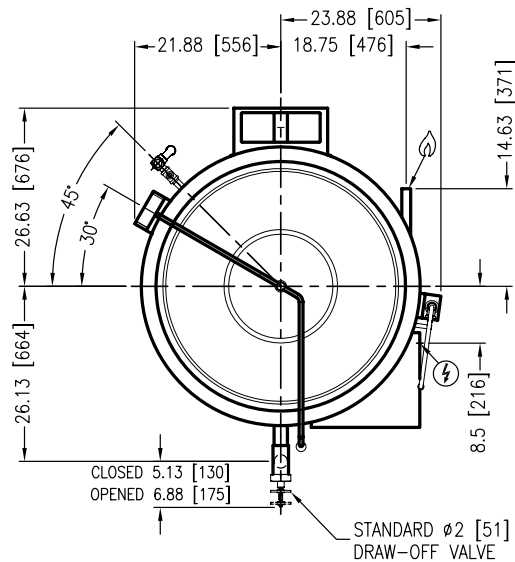
## SPECIFICATIONS:

Shall be a CROWN Model GL-60FE, gas fired self-contained full jacket steam kettle, AGA, CGA and NSF Certified, ASME code stamped and National Board registered. The kettle shall be constructed with an exterior of type 304 stainless steel, #4 sanitary finish and 6" (152 mm) stainless steel legs fitted with flanged adjustable feet. The burners shall be of stainless steel high efficiency atmospheric tubular design and easily serviceable. The interior kettle liner shall be a one piece all welded construction of type 316 stainless steel with #4 sanitary finish, and shall be furnished with a 2" (50 mm) draw-off valve and a spring assist stainless steel cover as standard. The recessed control panel shall be located on the front side of the unit in full view of the operator and easy to use. Standard controls shall include electronic ignition, direct immersion thermostat, water sight glass, cooking pilot light, vacuum/pressure gauge and low water indicator light. Safety features shall include a low water cut off, pressure relief valve, pressure control and 100% safety gas shut-off valve. The kettle shall operate in a temperature range of 165°F to 265°F (74°C to 130°C).



Models: ☐ GL-60FE

MODEL	SHIPPING WEIGHT	MINIMUM CLEARANCE	
GL-60FE	800 lbs. [318 kg]	SIDES	6" [152 mm]
		BACK	2" [51 mm]



IN [mm]  
7982R0

#### GAS CHARACTERISTICS

MODEL	GAS SUPPLY			
	BTU/HR.	kW/HR.	SUPPLY PIPE PRESSURE (W.C.)	
GL-60FE	150,000	44.0	Natural 6"-14" (152-356 mm)	Propane 11"-14" (279-356 mm)

\* For use on non-combustible floors only.

#### SERVICE CONNECTIONS

- 🔥 – Supply gas through 3/4" pipe. A gas shut-off valve must be installed in supply piping convenient and adjacent to appliance
- ⚡ – Unless other wise specified, Field Wire Electrical Connection to be 120 Volts, 60 Hertz, single phase with grounding wire. Unit furnished with 6' cord and 3 prong plug. Total maximum amps 2.0.

**INTENDED FOR COMMERCIAL USE ONLY.  
NOT FOR HOUSEHOLD USE.**



70 Oakdale Road, Toronto ON, Canada M3N 1V9  
(919) 762-1000 www.crownsteamgroup.com