



AX-CL06M

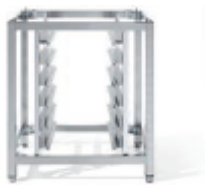
Full Size Combi Oven

Manual Controls - Reversing Fans - 6 Shelves



Manual controls		Time, temperature, steam	Features
Load capacity	6 shelves for full size sheet pans		<ul style="list-style-type: none">• Advanced airflow design• Automatic high speed reversing fans• Manual control: 120 minute timer or continuous ON• Interior halogen light• Includes electro valve for direct water connection• Adjustable steam percentage (0-100%)• Micro safety switch shuts oven off when door is open• Heavy duty stainless steel body construction• "Cold Door" design with double pane glass• Reinforced door hinges• Oven cavity is insulated with ultra-high temperature fiberglass insulation• 3 Stainless steel wire shelves• Hand spray for cleaning is included• Ovens can be stacked (kit required)• Warranty: 2 year parts & 1 year labor exclusive of lights, gaskets and glass (60 days)
High speed reversing fans	2 (3,200 rpm)		
Space between shelves	3.14" (80 mm)		
Power requirements	10.5Kw/208V/60/3 32A 14.0Kw/240V/60/3 36A Oven supplied with power cord only / no plug		
Temperature	86° - 545° F		
Equipped with	120 minute timer Signal at end of cycle		
Cavity size (inches)	28.35 x 22.20 x 24.10 (WxDxH)		
Unit dimensions (inches)	38.60 x 33.64 x 36.35 (WxDxH)		
Shipping dimensions (inches)	41.35 x 40.55 x 39.37 (WxDxH)		
Net / Ship weight	220 lb / 263 lb		

COMBI ACCESSORIES



AX-C6ST OVEN STAND

- Heavy duty oven stand with tray support
- Slides accommodate full size pans
- Dimensions: 23.30" x 20.87" x 31.50"
- Heavy duty stainless steel (assembly required)
- Shipping weight: 50 lbs
- Shipping dimensions: 37.40" x 24.80" x 7.88"



**125-R15
R15 CASTERS**

Set of 4
(2 with brakes)
For stand only



**124-KITC
STACKING KIT**



**125-0323
STACKING KIT
CASTERS**

Set of 4
(2 with brakes)



**125-0325
STACKING
CASTER SET**

(4 casters- 2 braked)
(2 support brackets)



**139-0002
DEGREASER**

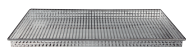


**139-0001
COMBI CLEANER**



**124-WDFA
WATER FILTER**

COMBI OVEN TRAYS



**124-GP31
FRY GRID**



**124-GP32
GRIDDLE GRID**



**124-GP28
GRANITE
MULTI-BAKING
TRAY**



**124-GP36
MULTIFUNCTIONAL
NON STICK
ALUMINUM TRAY**



**124-PT12
60X40
ALUMINUM
PERFORATED TRAY**



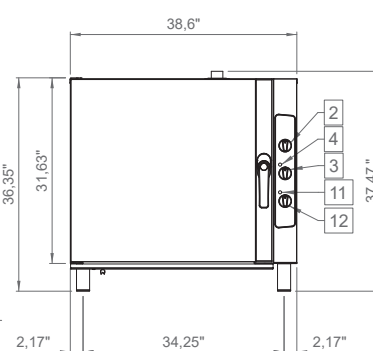
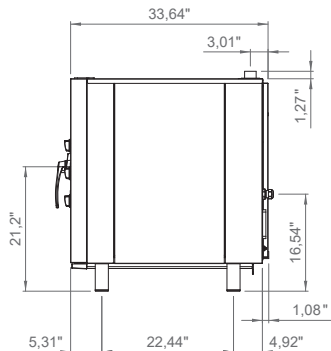
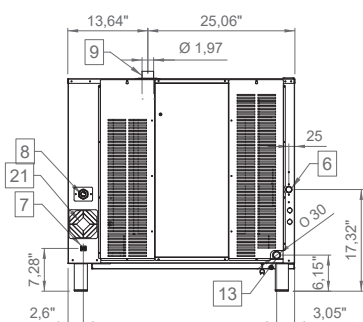
**124-PT13
60X40
ALUMINUM
TRAY**



**124-PG15
SHELF RACK**

LINE DRAWINGS

AX-CL06M



514-737-9701 786-600-4687

TOLL FREE: 888-275-4538

TOLL FREE: 844-218-8477

5659 ROYALMOUNT AVE, MONTREAL, QC, CANADA H4P2P9

12000 BISCAYNE BLVD, SUITE #108, MIAMI, FL, USA 33181

MVPGROUPCORP.COM SALES@MVPGROUPCORP.COM