



SERVING THE FOOD INDUSTRY SINCE 1951

Stainless Steel Refrigerated Salad Bar / Cold Food Table

ITEM: 50089 50090
 MODEL: PT-CN-1524-S-HC PT-CN-1778-S-HC



50090- 72"

Elevate your buffet service with a Salad Bar that offers practicality and durability.

The Omcan refrigerated salad bar is an essential addition to buffets and self-service areas. It comes with a sneeze guard, tray slide, two pan covers, and GN pans. The spacious design includes adjustable full-size pan slots for versatile combinations with a 430 stainless steel exterior and 201 stainless steel interior. Cyclopentane insulation maintains proper temperatures, and eco-friendly R290 refrigerant keeps food efficiently chilled. The tray slide can be positioned on either side, allowing placement against a wall or as an island, with additional slides available upon request.

The clear sneeze guard and basin covers protect food while maintaining visibility. Ample refrigerated storage underneath, with two plastic-coated steel shelves, keeps refills within reach, easily accessible via doors. The unit also includes casters for mobility, a digital controller with automatic defrost, and durable stainless steel construction, making it a practical and efficient solution for any commercial kitchen.

FEATURES:

- Stainless steel construction
- Sneeze guard included
- Plastic basin cover for contamination protection
- GN plastic pans included
- Tray slide included
- Digital control with auto defrost
- Eco-friendly R290 refrigerant
- Casters for mobility



50089- 60"

Telephone: 1-800-465-0234

Fax: (905) 607-0234

Email: sales@omcan.com

Website: www.omcan.com



Authorized Dealer

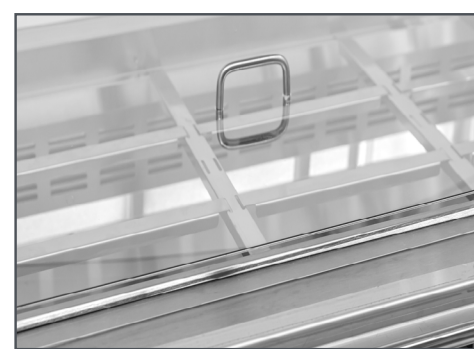
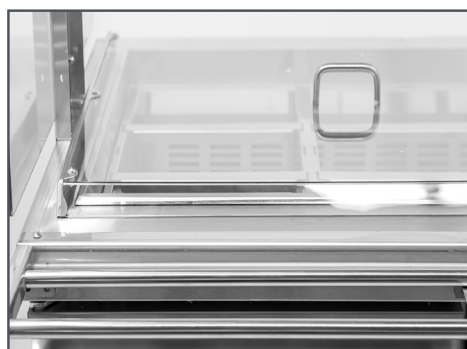


Made in China

(Version 2025.08)

Page 1 / 3

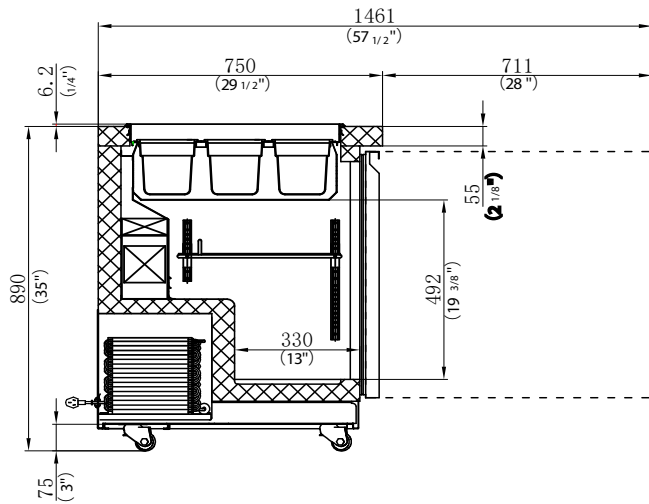
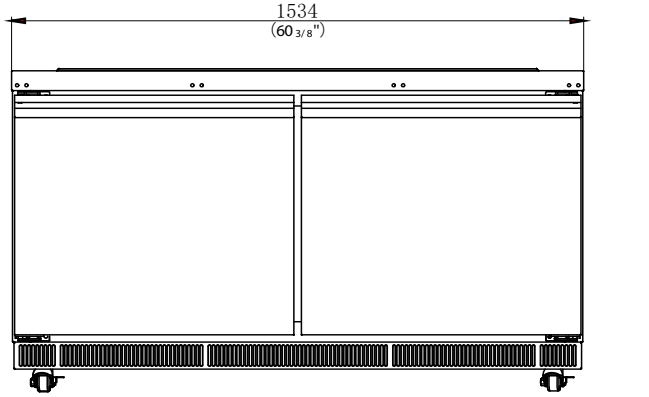
TECHNICAL SPECIFICATION		
Features	60" - Sneeze Guard, Tray Slide & Pan Covers	72" - Sneeze Guard, Tray Slide & Pan Covers
Item	50089	50090
Model	PT-CN-1524-S-HC	PT-CN-1778-S-HC
Capacity	469 L / 16.6 cu.ft.	616 L / 21.8 cu.ft.
Number of Doors	2 Doors	3 Doors
Number of Shelves	2 Plastic Coated Steel Shelves	3 Plastic Coated Steel Shelves
Shelf Capacity	90 lbs / 40 kgs	
Shelf Dimensions	27.4" x 17" / 695 x 434 mm (2)	21.6" x 17" / 549 x 434 mm (3)
Power	540 W	534 W
Current	5.4 A	5.5 A
GN Pan Size	12 1/3	15 1/3
GN Pan Covers Included	2 GN Pan Covers	
Max Depth of Pan	4" / 100 mm	
Casters	Yes	
Electrical	110V / 60Hz / 1Ph	
Temperature Range	0.6 to -0.6 °C / 33 to 31°F	
Refrigerant	R290	
Insulation Material	Cyclopentane	
Cooling System	Ventilated	
Interior Dimensions (WDH)	56.4" x 19.8" x 20" / 1433 x 503 x 507 mm	66.6" x 19.8" x 20" / 1691 x 503 x 507 mm
Net Weight	341.7 lbs / 155 kgs	374.8 lbs / 170 kgs
Net Dimensions (WDH)	60.4" x 29.5" x 34.6" / 1535 x 750 x 880 mm	70.6" x 29.5" x 34.6" / 1792 x 750 x 880 mm
Gross Weight	412 lbs / 187 kgs	454 lbs / 206 kgs
Gross Dimensions (WDH)	63" x 32.3" x 43.7" / 1600 x 820 x 1110 mm	73.1" x 32.3" x 43.7" / 1857 x 820 x 1110 mm
Plug Type	NEMA 5-15 P	



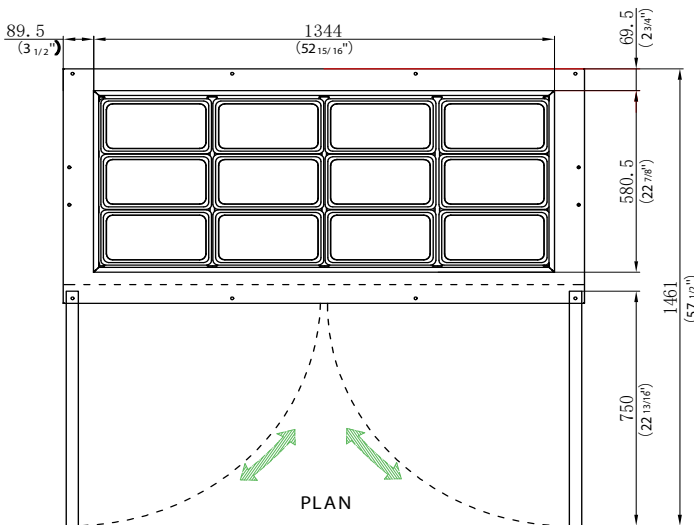
Sneeze Guard

TECHNICAL DRAWING

Item: 50089

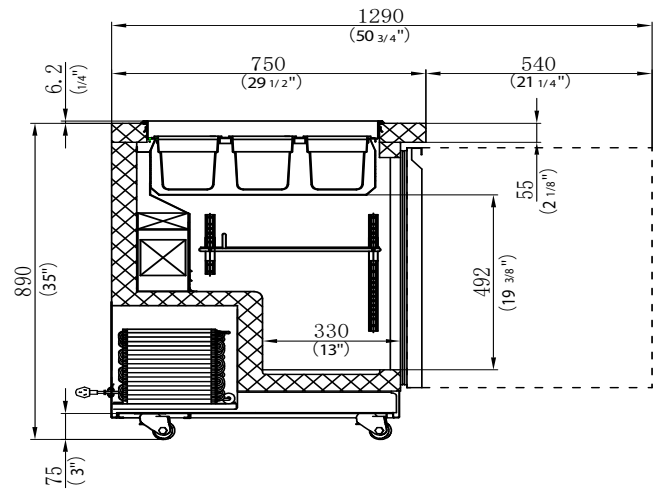
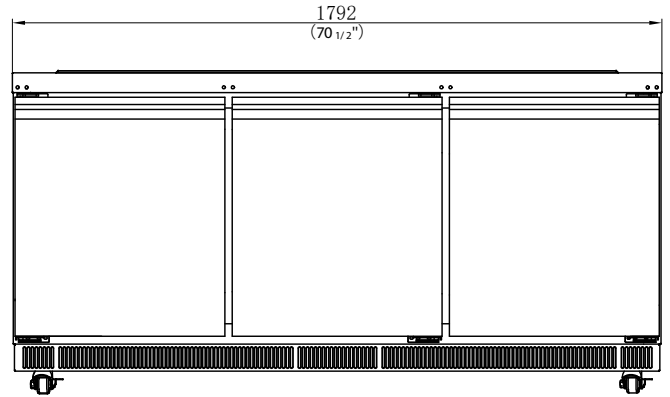


SECTION VIEW

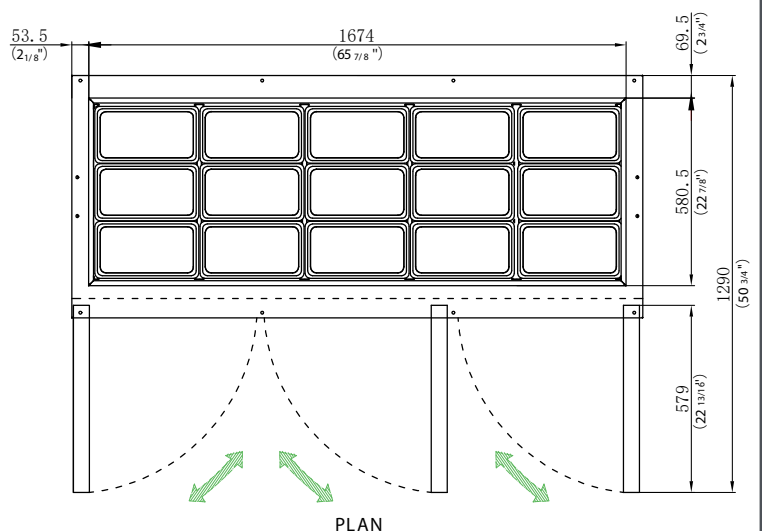


PLAN

Item: 50090



SECTION VIEW



PLAN