

General Information

Project Name: _____

Consultant: _____

Item #: _____

Model #: _____

Quantity: _____



Specifications

Top and sink constructed of 16GA stainless steel with coved intersection where top meets backsplash. Offset strip supplied for mounting to wall.

WS-CK Corner hand sink w/ utility shelf includes Electronic Faucet, Soap Dispenser & Apron. Backsplash is 8" high with 1" return to wall. Stainless steel apron is provided with holes for fastening to wall. Large coved corner sink bowl 9½" x 12" x 6" deep with 1½" waste drain. 4" center splash mounted faucet with wrist handles.

Note: Utility Shelf is included with splash mounted faucets.

Product Guide

IMC Corner Hand Sinks are easily cleanable without the use of tools. All corners are coved, and all seams are fully welded and polished.

Large oversize deck provides space for faucet and soap dispenser. High backsplash protects wall and keeps sink sanitary. Large integral apron conceals plumbing.

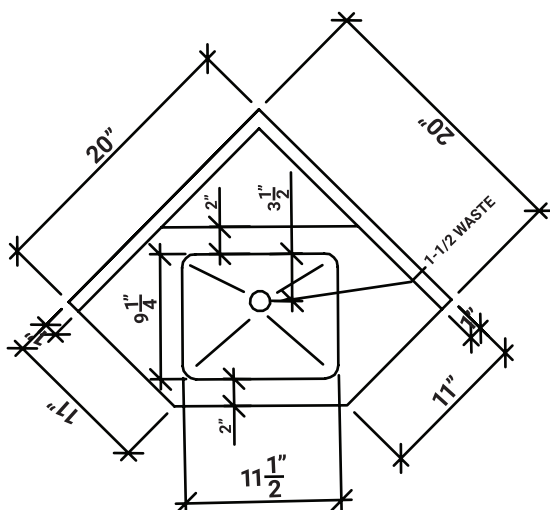
CORNER HAND SINK

Sink Only Models	Description	Sink w/ Faucet Models	Overall Size
<input type="checkbox"/> WS-CK-1SX	1 Splash Hole	<input type="checkbox"/> WS-CK-1S	20" x 20" x 14¾"
<input type="checkbox"/> WS-CK-2SX	2 Splash Holes	<input type="checkbox"/> WS-CK-2S	20" x 20" x 14¾"
<input type="checkbox"/> WS-CK-1DX	1 Deck Hole	<input type="checkbox"/> WS-CK-1D	20" x 20" x 14¾"
<input type="checkbox"/> WS-CK-2DX	2 Deck Holes	<input type="checkbox"/> WS-CK-2D	20" x 20" x 14¾"

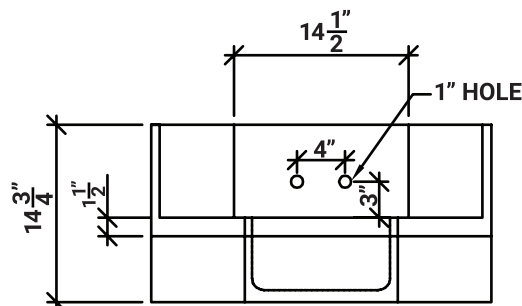


WS-CK 30 0318

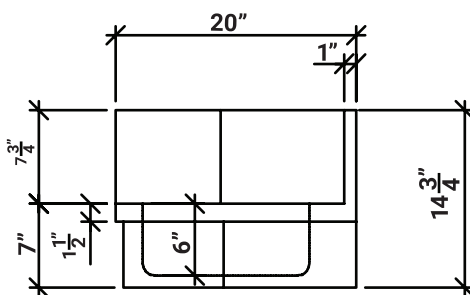
DRAWINGS



PLAN VIEW



FRONT VIEW



SECTION VIEW

OPTIONS

- ☐ **SS** - Side Splashes (Pair)
- ☐ **TLG** - Adjustable Tubular Legs
- ☐ **TWB** - Tubular Wall Brackets
- ☐ **RSOD** - Rear Sink Overflow Drain
- ☐ **CBW** - Custom Bowl Size: _____

ACCESSORIES

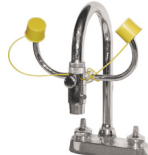
(See Price Book Pg. 58-60)



RGLH
Gooseneck Faucet



EFD
Electronic Faucet



EW-S
Eye Wash Faucet



TD
Towel Dispenser



CTSD
Combo Towel &
Soap Dispenser



ITSD
Integral Towel &
Soap Dispenser

Specifications subject to change without notice.

WS-CK 30 0318