

Champion®

The Dishwashing Machine Specialists

PROJECT: _____

ITEM # _____ QTY: _____

MODEL # _____

AIA # _____ SIS # _____

PP-12-PT (Pass Through)

DOOR TYPE POT, PAN AND UTENSIL WASHER



Rendered image is for general visual representation only. Please refer to specifications for the latest detailed product information.

STANDARD FEATURES

- Heavy-Duty Stainless Steel Construction
- 12 Sheet Pan Capacity
- External Rinse Hose And Spray Gun
- Self-Contained Water Heating
- Moisture Resistant Control Gauges
- Recirculating Wash Water
- Adjustable Wash And Rinse Cycles
- Removable Dual Filtration System
- Electric Or Steam Water Heating
- Precision Engineered Spray Patterns
- Digital Control And Information Center
- One-Year Parts And Labor Warranty
- High-Pressure Wash System (35-45 PSI)

OPTIONS

- Tank Heat Steam
- Motorized Drain
- Stainless Steel Rinse Nozzles
- Drain Water Tempering Kit
- Steam Extraction Fan
- Vent Fan Control Switch
- Water Softener



In the USA:

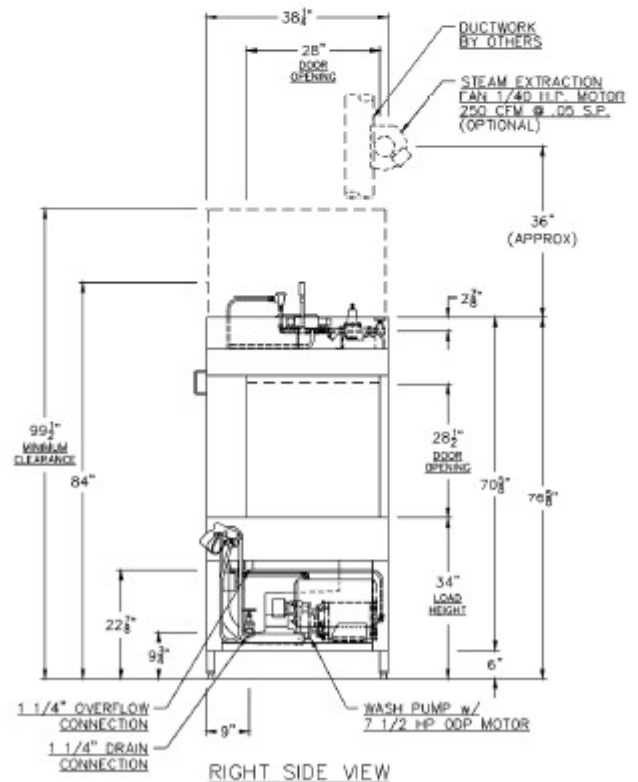
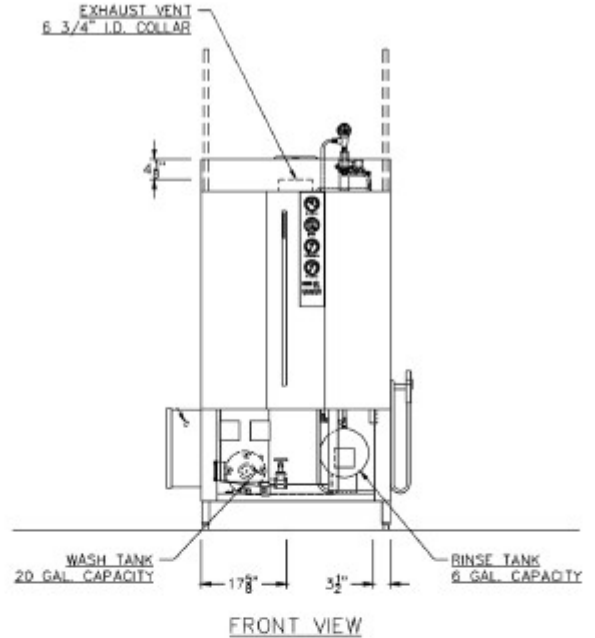
3765 Champion Blvd, Winston-Salem, NC 27105
Tel: (336) 661-1556 Fax: (336) 661-1979
www.championindustries.com

In Canada:

2674 N. Service Rd., Jordan Station, Ontario, Canada L0R1S0
Tel: (905) 562-4195 Fax: (905) 562-4618
www.championmoyerdiebel.ca

SPECIFICATIONS

| Machine Construction | 12, 14, & 16 gauge stainless steel. All seams heliarc welded. |
|--------------------------------------|---|
| Door | Stainless steel, counter-balanced with self-lubricating guides. Stainless steel cables on nylon rollers with guards to prevent jumping. |
| Filter | Perforated, removable, stainless steel screens. |
| Water Pump | 7-1/2 Hp., 208/240 or 440/480 volt, 1 phase or 3 phase, 60 cycle with output of 120 gallons per minute at 35 to 45 P.S.I. |
| Digital Control & Information Center | 120 volt control circuit with push pad operation of "Power On", "Stop" and "Short, Medium or Long Wash Cycles". A digital display indicates "Time Remaining" for each cycle. LED's indicate wash, rinse and unload functions. A buzzer is also included to provide an audible indication of time to unload. A pre-programmed circuit board allows the push pad to be used as a "Diagnostic Center" by displaying "Error Codes" for ease of troubleshooting. |
| Gauges | Wash temperature, rinse temperature, wash jet pressure. Special moisture resistant design. |
| Wash Tank | Stainless steel with electric, steam or steam coil heating. Thermostatically controlled, low water protected, sloped to drain 20 gallon capacity. |
| Rinse Tank | Stainless steel with electric or steam coil heating to provide 180°F/190°F hot sanitizing rinse. |
| Racks | Stainless steel rod, built to match specific washing requirements. |



| | |
|---|---|
| Cabinet | 39" wide x 38 1/4" deep x 76 1/2" high (99 1/2" overall clearance height with door open). Door Opening: 28" wide x 28" high. Wash Chamber: 27 3/8" wide x 26 1/8" deep x 25 1/2" high. Constructed of #16 gauge, #304 STAINLESS STEEL with a #3 finish. All seams are tig welded. Seams, where needed for watertight construction, are continuously welded. All other seams are stitch welded for strength. All welds are cleaned inside, cleaned and buffed outside. Optional continuous welds in lieu of stitch welds available. |
| Door | Lift-up door type. Two (2) doors with single control handle. Counter balanced with self-lubricating guides, STAINLESS STEEL cables on nylon rollers with cable guards to ensure tracking. Doors are interlocked with limit switch to prevent machine operation while doors are open. Constructed of #16 gauge, #304 STAINLESS STEEL with a #3 finish. |
| Recirculating Wash Tank | Constructed of #14 gauge, #304 STAINLESS STEEL, heated by 12 KW electric immersion heaters (live steam or steam coil options are available). Complete with low water protection, automatic fill, 1 1/4" NPT overflow connection, 1 1/4" gate drain valve, thermometer, pressure gauge and is thermostatically controlled. 20 gallon tank capacity, sloped to drain. Optional automatic pump operation for elevated drain locations (42" high max) is available complete with 1/4 H.P., 120 volt, single-phase drain pump. With this option, wash tank completely drains when power is turned off. |
| Wash Tank Filter | Perforated, stainless steel basket type, double filter system for increased effectiveness and easy cleaning without emptying wash tank. |
| Wash Tank Fill Valve | Size 1/2" brass material, solenoid type, automatic. |
| Wash Tank Drain Valve | Size 1-1/4" brass material, gate type for manual or electrically operated ball valve for automatic option. |
| Wash Pump | Closed coupled centrifugal wash pump, bronze fitted with cast iron casing. Complete with 7 1/2 H.P. ODP motor (optional TEFC or wash down duty motors available). 208/240/480 or optional 575 volt, 1 or 3 phase, 60 cycle. Rated for 120 gallons per minute at 35 to 45 PSI. Optional STAINLESS STEEL wet end available. |
| Rotating Wash Hub and Spray Arm Assembly | Water driven, STAINLESS STEEL spray arm assembly with STAINLESS STEEL jets, removable end caps and hand operated quick release mechanism for easy cleaning and reassembly. |
| Filtration | Perforated STAINLESS STEEL basket type. Double filter system for increased effectiveness and easy cleaning without emptying wash tank. |
| Sanitizing Rinse Tank | Constructed of #14 gauge, #304 STAINLESS STEEL, heated by a 6 KW electric immersion heater (steam coil option is available). Complete with thermometer, pressure gauge and is thermostatically controlled. Uses 3.8 gallons per 30 second cycle at 20 PSI and has a 6 gallon capacity. |
| Water Supply Valve | Size 1/2" brass material, solenoid type, automatic. |
| Final Rinse Piping | 300 Series STAINLESS STEEL tubing with brass compression fittings and full cone rinse jets. Optional STAINLESS STEEL fitting and jets are available. |
| Electrical Enclosure & Controls | Electrical enclosure is UL 12 or optional UL 4X STAINLESS STEEL with Sq. "D" components. Optional disconnect switch with safety lockout is available. Includes 120 volt control circuit and motor starters. Digital Control and Information Center consists of push pad operation of "POWER ON", "SHORT, MEDIUM or LONG" wash cycles. Also included is a digital display which indicates time remaining, cycle indicator lights and a buzzer to indicate full cycle completion. The display along with the push pad can also be used as a diagnostic center by displaying error codes for ease of troubleshooting. Moisture resistant gauges measure temperatures and pressures for wash and rinse cycles. Optional Schneider Modicon PLC with Magellis 5.7 color operator interface touch screen including ethernet and data logging capabilities in lieu of Digital Control and Information Center. Washer will be wired in hard aluminum conduit and tested prior to shipment. |

- External Rinse Spray Hose** Externally mounted rinse hose with spray gun for easy cleaning and maintenance of machine.
- Steam Exhaust Vent** Steam exhaust vent 6 3/4" I.D. consisting of #16 gauge rolled collar, for 6" PVC pipe connection, welded to the top of the machine. Machine pre-wired with control timer for the addition of a fan.
- Optional Exhaust Fan** Draft inducer fan side mounted on exhaust duct to extract excess steam after final rinse cycle. 1/40 H.P. ODP motor, 110 volt, 1 phase, 1550 RPM, rated for 250 CFM at .05" static pressure. Optional fan with STAINLESS STEEL housing and blade with 1/2 H.P. motor is available.
- Racks** Customized to hold your specific items. Standard bakery racks include utensil basket with hold-down lid and bun/sheet pan rack designed to hold twelve (12) pans. Constructed of STAINLESS STEEL rod, mig welded.
- Connections**
 - Water Inlet: 3/4" NPT, 120° F. at 20 PSI
 - Drain: 1 1/4" NPT
 - Overflow: 1 1/4" NPT
 - Steam Option: 1/2" NPT or (2) 1/2" NPT with optional steam heated rinse tank
 - Steam Condensate: 1/2" NPT or (2) 1/2" NPT with optional steam heated rinse tank
 - Electrical: Single-point connection.
- Racks** See attached Utilities Chart for service requirements specific to various combinations of wash and rinse tank heating. Calculations are based on a room temperature of 72° F.

Electrical Connections

Contact factory for mixed heat sources.

| PP-12-PT, Pass Through | Running Amps | |
|------------------------|--------------|---------------------------|
| | Elec. Specs | Amp Minimum Service Break |
| 240/60/1 | 106 | 150 |
| 208/60/3 | 71 | 90 |
| 240/60/3 | 63 | 80 |
| 480/60/3 | 32 | 40 |
| 575/60/3 | 28 | 35 |

| PP-12-PT, Pass Through | Running Amps | |
|------------------------|--------------------------|---------------------------|
| | Steam Wash Steam Booster | Amp Minimum Service Break |
| 240/60/1 | 31 | 40 |
| 208/60/3 | 21 | 30 |
| 240/60/3 | 19 | 25 |
| 480/60/3 | 11 | 15 |
| 575/60/3 | 9 | 15 |

Steam Consumption: 63 lbs. per hour at 15 PSI minimum.

Certifications UL and UL Sanitation Listed (all). CUL Listed (electric and steam only).

Warning Plumbing and electrical connections should be made by qualified personnel who will observe all the applicable plumbing, sanitary, and safety codes and the National Electrical Code.

Note Water Hammer Arrestor (meeting ASSE-1010 standard or equivalent) to be supplied (by others) in common water supply line at service connection.

Plumbing Notes Because of the variation in house-supplied steam and water pressures, steam and water pressure regulating valves (PRVs) may be needed. (Water PRV is standard on machines with booster.) The PRVs can either be purchased from Champion or obtained locally. Champion does not endorse using on-demand (tankless) water heating systems, as well as PEX and other plumbing materials that may limit water flow, as these could impair machine performance. For optimal results, we recommend using appropriately sized conventional hot water tanks and standard copper water supply lines that adhere to our specifications. Not following these recommendations may void the manufacturer's warranty. Water hardness of 3 grains/US Gal (0.83 Imp Gal) – 5.3 Mg/L or less