

DynaStar® VER

Ventless High Temperature Sanitizing Door-type Dishwasher with Energy Recovery

Standard Features

- ▶ Ventless: does not require a hood
- ▶ Unique, two-pass Energy Recovery System
- ▶ Door interlock keeps door locked during cycle
- ▶ Built-in 40-70 °F rise booster heater with Sani-Sure™ final rinse system ensures proper rinse water temperature
- ▶ Pumped rinse for consistent rinse pressure
- ▶ Adjustable rinse system
 - Econo uses 0.70 gallons per rack
 - Turbo uses 0.89 gallons per rack
- ▶ Automatic tank fill
- ▶ Door-actuated start
- ▶ Three (3) selectable timed cycles
- ▶ Digital LED display
- ▶ Onboard digital diagnostics
- ▶ Delime cycle
- ▶ 17 1/2" (445 mm) vertical chamber clearance
- ▶ Triple wash arm provides consistent and reliable washing performance
- ▶ Specially designed stainless steel nozzles provide superior cleaning action
- ▶ Interchangeable upper and lower wash/rinse arms
- ▶ 1 HP stainless steel wash pump motor
- ▶ Vent fan control shuts vent fan off when machine is idle
- ▶ Interchangeable scrap baskets
- ▶ Single point connections for all utilities
- ▶ Field convertible from straight through to corner and vice versa (kit required)
- ▶ Field convertible from 3-phase to single phase and vice versa (kit required)
- ▶ Low watt density electric wash tank heater
- ▶ Hi-limit thermostat and low water protection
- ▶ Detergent/rinse additive signal connection fuse box
- ▶ Front and side stainless steel dress panels
- ▶ Adjustable bullet feet
- ▶ Durable stainless steel construction



Specification Statement

Specified unit will be a Jackson DynaStar ventless high temperature sanitizing door-type dishwasher with two-pass energy recovery system, rated by ETL Sanitation to NSF/ANSI Standard 3. Unit will be ENERGY STAR® certified. Unit to be rated for 40 racks per hour, 0.70 gallons per rack, and will include a built-in 40-70 °F rise booster heater with Sani-Sure™ final rinse system, three (3) selectable timed cycles, solid-state controls with digital LED temperature/operator display and service diagnostics. Unit will have an adjustable rinse system, Econo Rinse uses 0.70 gallons per rack; Turbo Rinse uses 0.89 gallons per rack. Other features include automatic tank fill, delime cycle, triple wash arm, pumped final rinse, vent fan control, and 1 HP stainless steel wash pump motor. Height of dishmachine including heat exchanger shall be 62 3/8". Constructed of durable stainless steel with adjustable bullet feet.

1-year parts and labor warranty.

Options & Accessories

- ▶ 460V Electrical
- ▶ Single Phase
- ▶ Dual Point Connection
- ▶ Drain Water Tempering Kit
- ▶ Water Hammer Arrestor
- ▶ False Panel (for corner installations)
- ▶ Flanged Feet
- ▶ Security Package
- ▶ Scallrol
- ▶ Replacement Cartridge for Scallrol
- ▶ 36-Compartment Rack 4-1/8" tall (105 mm)
- ▶ 5-5/8" tall (143 mm)
- ▶ 7" tall (178 mm)
- ▶ Combination Rack
- ▶ Peg Rack

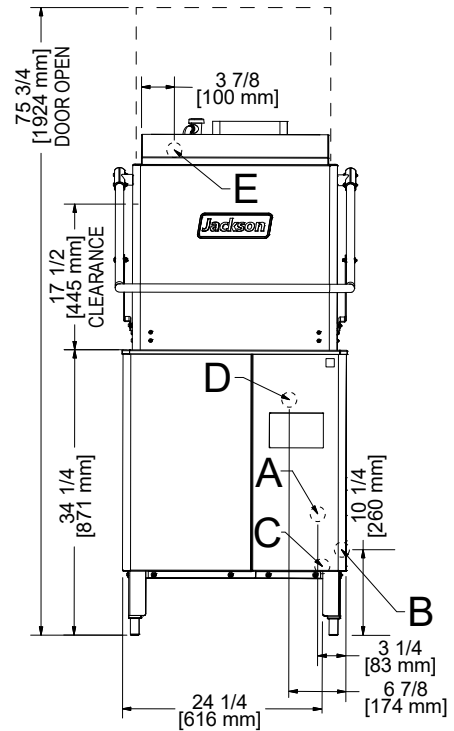
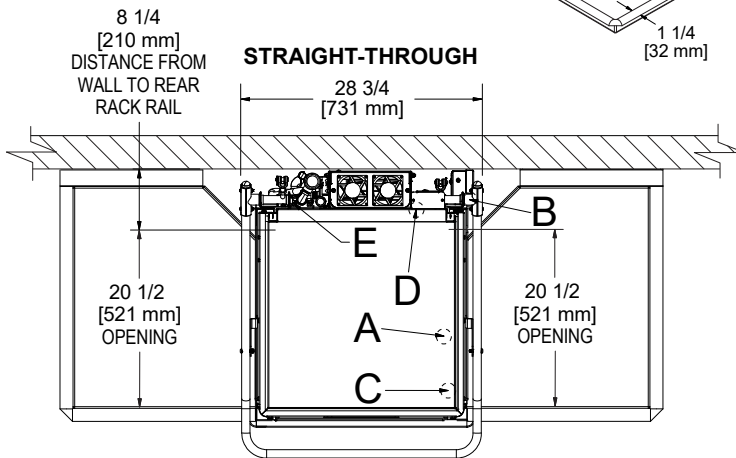
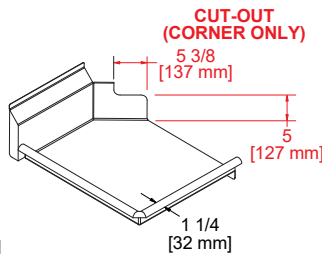
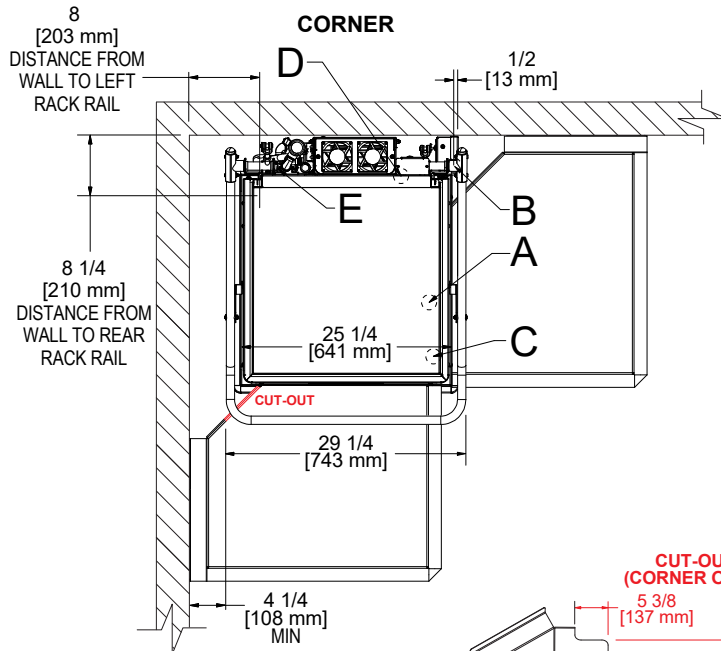
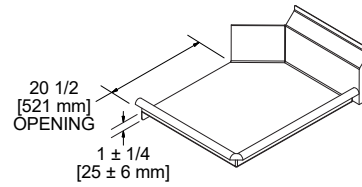
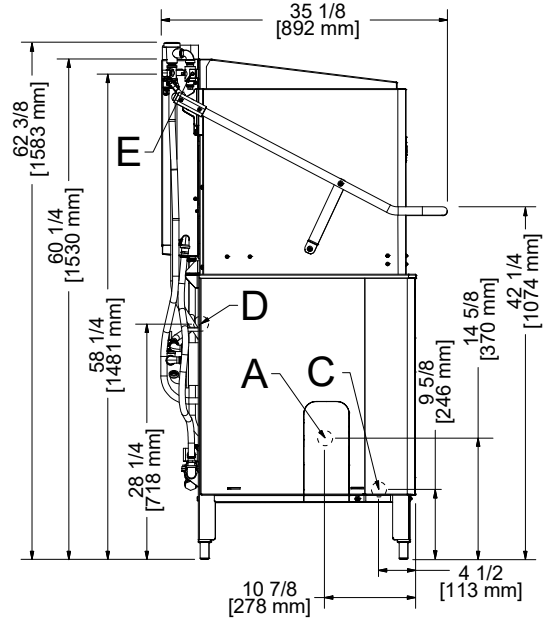


LEGEND

- A - Drain Connection (1 1/2" NPT)
- B - Water Inlet (1/2" male NPT)
(Connect to true 1/2" ID line or larger)
- C - Electrical Connection
- D - Detergent Connection
- E - Rinse-aid Connection

All dimensions from floor can be increased 1 1/8" using the machine's adjustable feet.

Dish tables are stationary, so the machine must be moved until rack rails line-up properly. As a result, distances from wall to rack rails might vary.



Operating Capacity (Cycle I)

Racks per Hour	40 (38)*
Dishes per Hour	1,000
Glasses per Hour	1,440

Operating Temperature

Wash Temperature (minimum)	150 °F/66 °C
Rinse Temperature (minimum)	180 °F/82 °C

Operating Cycle (seconds)

	Wash	Rinse	Dwell	Vent	Total Cycle
Cycle I	40	11	07	30	88
Cycle II	90	11	07	30	138
Cycle III	220	11	07	30	268

Water Consumption

Gallons per Rack (Econo rinse)	0.70 (2.7 L)
Gallons per Rack (Turbo rinse)	0.89 (3.4 L)
Gallons per Hour (Econo rinse)	28.00 (106.0 L)
Gallons per Hour (Econo rinse)**	26.60 (100.7 L)
Gallons per Hour (Turbo rinse)	35.60 (134.8 L)
Gallons per Hour (Turbo rinse)**	33.82 (128.0 L)
Wash Tank Capacity (gallons)	8.00 (30.3 L)
Booster Tank Capacity (gallons)	1.66 (6.3 L)

Water Requirements

Incoming Water Temperature	40-90 °F/5-33 °C
Flow Pressure (PSI)	15 - 65
Incoming Water Connection (NPT)	1/2"
Drain Connection (ID)	1 1/2"

Electrical Specifications

Wash Pump Motor (HP)	
208V	1
230V	1
460V	3/4
Wash Tank Heater (kW)	
208V	4.1
230V	5.0
460V	5.0
Rinse Tank Heater (kW)	
208V	9.0
230V	11.0
460V	9.2

Heat Output (BTU/HR)

Latent Heat	6047
Sensible Heat	5834

Dimensions

Width	29 1/4" (743 mm)
Depth	35 1/8" (892 mm)
Height	62 3/8" (1583)
Height with Door Open	75 3/4" (1924 mm)
Inside Clearance Height	17 1/2" (445 mm)
Wall Clearance	
Rear	0" (0 mm)
Side (corner installation)	4 1/4" (108 mm)
Drain Height	14 5/8" (370 mm)

Shipping Details

Shipping Weight	391 lbs (178 kg)
Shipping Width	33" (838 mm)
Shipping Depth	42" (1067 mm)
Shipping Height	68 1/2" (1740 mm)
Shipping Cube	55.95 cu ft
Shipping Class	150

*Racks per hour calculated with NSF suggested load time of :05 for door-type (straight thru) dishmachines.

**Gallons per hour calculated with NSF suggested load time of :05 for door-type (straight thru) dishmachines.

Single Point Connection

Power Supply	Total Load	Minimum Circuit Ampacity	Maximum Overcurrent Protection
208/60/3	42.2 A	43.4 A	45.0 A
230/60/3	47.0 A	48.2 A	50.0 A
460/60/3	19.8 A	20.2 A	25.0 A
208/60/1	68.8 A	70.1 A	75.0 A
230/60/1	77.1 A	78.4 A	80.0 A

Dual Point Connection

Power Supply	Total Load	Minimum Circuit Ampacity	Maximum Overcurrent Protection
208/60/3 TB1 ¹	17.2 A	18.4 A	20.0 A
208/60/3 TB2 ²	25.0 A	26.3 A	30.0 A
230/60/3 TB1 ¹	18.9 A	20.2 A	25.0 A
230/60/3 TB2 ²	28.1 A	29.3 A	30.0 A
460/60/3 TB1 ¹	8.3 A	8.6 A	15.0 A
460/60/3 TB2 ²	11.5 A	12.8 A	15.0 A
208/60/1 TB1 ¹	25.5 A	26.7 A	30.0 A
208/60/1 TB2 ²	43.3 A	44.6 A	45.0 A
230/60/1 TB1 ¹	28.5 A	29.8 A	30.0 A
230/60/1 TB2 ²	48.6 A	49.9 A	50.0 A

¹TB1 - Wash pump motor, rinse pump motor and wash tank heater
²TB2 - Rinse tank heater

Advisory: Jackson WWS, Inc. DOES NOT endorse "Tankless On-Demand" water heaters for use with our dishmachines. Jackson WWS, Inc. DOES endorse, and highly recommends, standard "tank" style water heaters, sized to properly handle the water heating requirements of the facility.

DynaStar VER is equipped with a pumped rinse, so a PRV is not required unless flow pressure is over 65 PSI. Flow pressure under 15 PSI could affect fill/start-up time.

CONTACT JACKSON

07610-004-92-09 [11/18/25]

Address
 6209 N U.S. Highway 25E
 Gray, Kentucky 40734

Website
www.jacksonwws.com

Telephone & Fax
 T 888.800.5672
 F 606.523.1799

Email
customer.service@jacksonwws.com

