



DISHWASHER

CENTER OF ALL YOUR FOOD SERVICE NEEDS

UPRIGHT HIGH TEMPERATURE DISHWASHER WITH DIGITAL CONTROL

Item: 46797

Model: CD-GR-1500

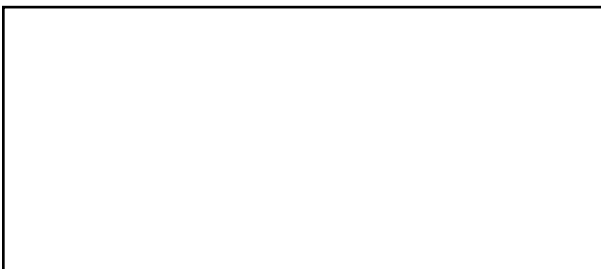


*High Performance and Quality
Upright Dishwasher*

Features:

- Automatic Fill
- Double skin door
- Automatic drain pump
- Self-cleaning mode
- Built in booster heater
- Built in chemical pumps
- IP 44 washing pump
- Guarantee rinse temperature
- Self-diagnostic mode
- 3 washing programs available
- Easy access for maintenance
- Durable inox construction
- Standard pressure reducer valve (PRV)
- Standard back cover

Product might not be exactly as shown



Authorized Dealer



WARRANTY
PARTS AND LABOR



DISHWASHER

UPRIGHT DISHWASHER



NOTE:
Normal operation generates steam that may escape from the door. Materials like wood, laminate etc. are unsuitable for areas exposed to dishwasher steam and only stainless steel surfaces is recommended.

Parts:

1. NSF certified indicators for wash temperature, rinse temperature and rinse pressure
2. 304 stainless steel body and handle, heavy duty & corrosion resistant
3. Upper and lower wash/rinse arms with high temperature cycles
4. 1 peg rack, 1 flat rack & 1 cutlery tray included

Commercial dish washer model: CD-GR-1500

- Rinse with fresh water
- Guarantee rinse temperature
- Connection to minimum 55°C water supply
- Minimum - Maximum set point Temp adjustment: 30°C - 90°C

PRODUCT SPECIFICATIONS

| | |
|-----------------|--------------------------|
| ITEM | 46797 |
| MODEL | CD-GR-1500 |
| BASKET SIZE | 20" x 20" / 500 x 500 mm |
| POWER SUPPLY | 208-240V / 60Hz / 1 Ph |
| POWER | 10.5 kW |
| AMP | 39A |
| WASH PUMP MOTOR | 1.5 HP |

Plug and Wire (not included): Requires a certified electrician to install unit.

WATER CONNECTION

| | |
|--------------------------|-----------------------|
| FLOW PRESSURE | 20 psi ± 5 |
| WATER CONSUMPTION / RACK | 0.7 gal (2nd program) |
| WATER CONSUMPTION / HOUR | 13.2 gph |
| WATER INLET CONNECTION | 3/4" |
| DRAINING CONNECTION | 1.2" |

CAPACITY

| | |
|---------------------------|---------------------------------------|
| CAPACITY | Booster tank: 7.4L, Wash tank: 68L |
| HEATING ELEMENT | Booster tank: 7.5 kW, Wash tank: 6 kW |
| RACK / HOUR (1ST PROGRAM) | 28 |
| RACK / HOUR (2ND PROGRAM) | 19 |
| RACK / HOUR (3RD PROGRAM) | 14 |
| WASH CYCLE 1 | 103 SEC |
| WASH CYCLE 2 | 163 SEC |
| WASH CYCLE 3 | 223 SEC |
| RINSE CYCLE | 16 SEC |

WORKING TEMPERATURE

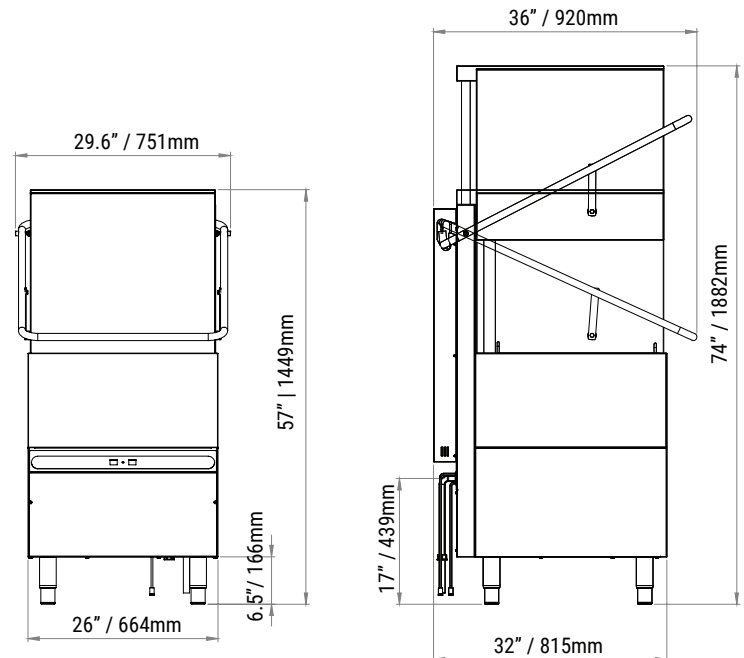
| | |
|-------------------------------|----------------|
| WASHING | 74 °C / 165 °F |
| RINSING | 74 °C / 165 °F |
| MIN-MAX SET POINT TEMPERATURE | 30°C - 90°C |

DIMENSIONS

| | |
|----------------------|---|
| DOOR CLEARANCE | 16" / 400 mm |
| USEFUL DOOR OPENING | 15.5" / 395 mm |
| NET DIMENSIONS (WDH) | 30" x 36" x 57" / 751 x 920 x 1449 mm (74" / 1882 mm open) |

GROSS DIMENSIONS

| | |
|------------------|---------------------------------------|
| GROSS DIMENSIONS | 30" x 35" x 57" / 760 x 880 x 1440 mm |
| GROSS WEIGHT | 284 lbs/ 129 kg |



OMCAN INC.

Telephone: 1-800-465-0234
 Fax: (905) 607-0234
 E-mail: sales@omcan.com
 Website: www.omcan.com



Follow us to keep up to date with the latest news and offers

