



GAS STEAM KETTLE STATIONARY



SPECIFICATIONS:

Shall be a Crown model _____, gas fired, self-contained, fully insulated steam jacketed kettle, ASME Code stamped, National Board Registered, AGA and CGA design certified, NSF approved. The unit comes standard with a spring assisted cover. The kettle shall be constructed with an exterior of type 304 stainless steel, #4 sanitary finish and four 6" stainless steel adjustable legs. The interior kettle liner shall be a one piece welded construction made with type 316 stainless steel with #4 sanitary finish, 2/3 jacketed and shall be furnished with a 2" tangent draw off valve with strainer as standard. The recessed control panel is located on the front side of the unit in full view of the operator and is easy to use. Standard controls include electronic ignition, direct immersion thermostat, water sight glass, cooking light, pressure gauge and low water indicator light. Safety features shall include a low water cut off, pressure relief valve, pressure switch and a safety gas shutoff valve.

A double wall kettle interior shall form a steam jacket around the lower 2/3 of the kettle. The bottom of the kettle shall be of hemispherical design for superior heat circulation.

Convenience features shall include 2" (50 mm) sanitary draw-off valve with a heat resistant handle. Faucet bracket included.

| MODEL | CAPACITY | |
|---------|------------|-----------|
| GL-80E | 80 Gallon | 303 Liter |
| GL-100E | 100 Gallon | 379 Liter |

OPERATION SHALL BE BY:

- ☐ Natural Gas
- ☐ L.P. Gas

For operation on 115 VAC, 1 phase 50/60 Hz, A.S.M.E. code stamped for operation up to 35 psi (241 kPa). The steam kettle temperature ranges shall be between 165°F to 265°F (74°C to 130°C).

OPTIONAL ITEMS AT EXTRA COST:

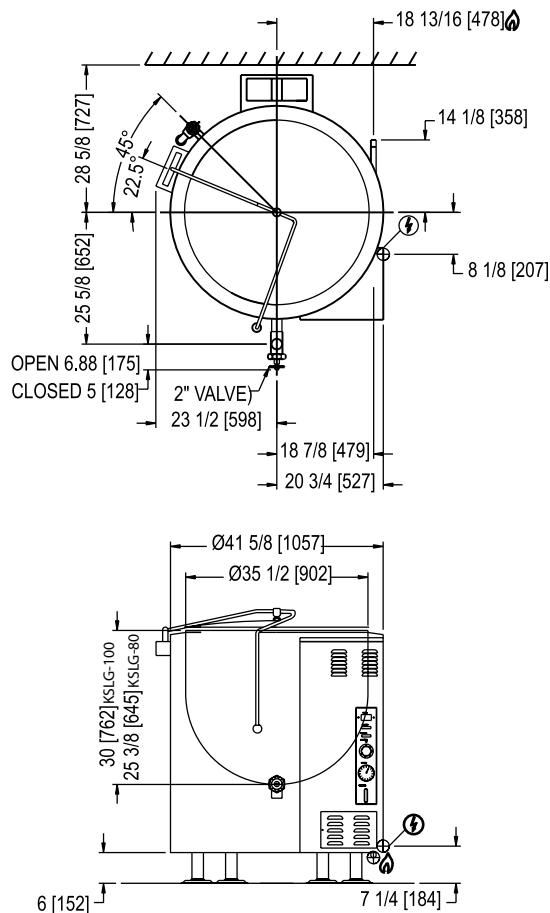
- ☐ 208-240 VAC operation (specify voltage)
- ☐ 3" (76 mm) draw-off valve with perforated strainer (TVS-3)
- ☐ Etched gallon markings (GM-)
- ☐ Etched liter markings (LM-)
- ☐ Correctional Package

ACCESSORIES:

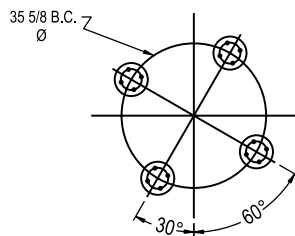
- ☐ Single pantry faucet with swing spout, SF-12
- ☐ Double pantry faucet with swing spout, DF-12
- ☐ Single pantry kettle filler (SP-KF-GK)
- ☐ Double pantry kettle filler (DP-KF-GK)
- ☐ Stainless steel tri basket, (TBA-)
- ☐ Solid disc for draw-off valve (TSS-)
- ☐ Graduated measuring strip (CMS-)
- ☐ Strainer hook (SH-)
- ☐ Draw-off valve hose kit (DVHK-2)



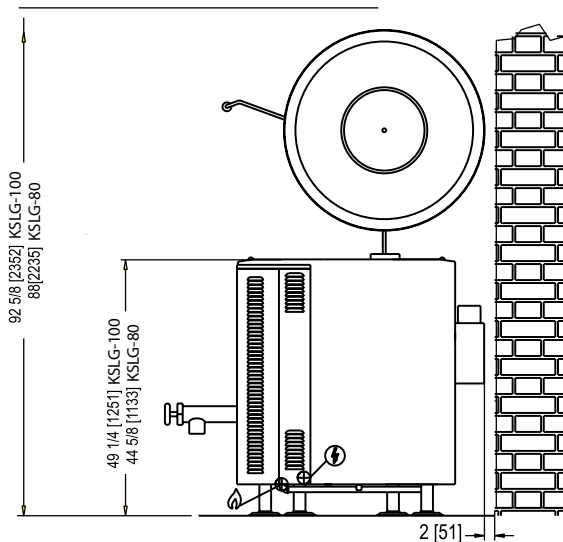
Models: ☐ GL-80E ☐ GL-100E



| MODEL | SHIPPING WEIGHT | MINIMUM CLEARANCE * | |
|---------|--------------------|---------------------|-------------|
| GL-80E | 950 lbs. [430 kg] | Side Back | 6" [152 mm] |
| GL-100E | 1100 lbs. [498 kg] | | 2" [51 mm] |



FLANGED FOOT DETAIL
 4 EQUALLY SPACED
 Ø7/16" [11mm] HOLES
 ON 3 [76] B.C.



DIMENSIONS ARE IN INCHES [MM]

| MODEL | GAS SUPPLY | | | |
|---------|------------|--------|--------------------------------|---------------------------------|
| | BTU/HR. | KW/HR. | SUPPLY PIPE PRESSURE (W.C.) | |
| GL-80E | 150,000 | 44.0 | Natural 6"-14" (152-355 mm) | Propane 11"-14" (279-355 mm) |
| GL-100E | 150,000 | 44.0 | | |

* For use on non-combustible floors only.

SERVICE CONNECTIONS

- Supply gas through 3/4" pipe. A gas shut-off valve must be installed in supply piping convenient and adjacent to appliance
- Unless other wise specified, Field Wire Electrical Connection to be 120 Volts, 60 Hertz, single phase with grounding wire. Unit furnished with 6' cord and 3 prong plug. Total maximum amps 2.0.

**INTENDED FOR COMMERCIAL USE ONLY.
 NOT FOR HOUSEHOLD USE.**



70 Oakdale Road, Toronto ON, Canada M3N 1V9
 (919) 762-1000 www.crownsteamgroup.com