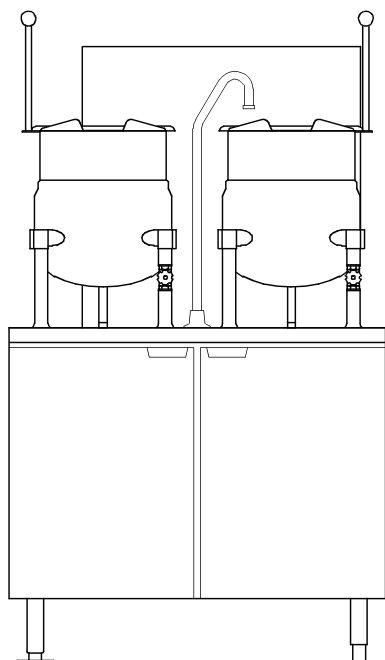




# DIRECT STEAM KETTLE ON GAS BOILER BASE



## SPECIFICATIONS:

Shall be a Crown Model GMT-6-6 , consisting of two direct connected steam, tilting kettles, 6 gallon (23 litre). A double wall kettle interior shall form a steam jacket around the lower 2/3 of the kettle. The bottom of the kettle shall be of hemispherical design for superior heat circulation. The liner shall be of 316 stainless steel for high acid content products. The stainless steel mounting legs shall have the steam supply and condensate within the legs and the right leg fitted with a steam control valve for the kettle. Each kettle shall be fitted with a tilt handle and heat proof knob, allowing the kettles to be tilted forward 90 for complete emptying.

The kettles mounted on a cabinet base with full perimeter angle frame, reinforced counter, hot and cold water faucet with control valves, 3" (76 mm) deep sinks with drain and splash guard grates, boiler mountings, gas boiler controls, hinged doors with magnetic catches, removable side panels and 6" (152 mm) stainless steel legs fitted with 4 adjustable flanged feet for securing to the floor, all #4 stainless steel exterior. Steam manifold canceled within cabinet fitted with steam trap and safety relief valve. Water treatment system, electronic ignition, nickel plating, CSD-1 boiler controls, automatic blow-down, and split water line come standard.

**\*SEE REVERSE SIDE OF SPEC SHEET FOR WATER TREATMENT SYSTEM STATEMENTS\***

MODEL	DESCRIPTION	CAPACITY (PER KETTLE)	
		GALLON	LITER
GMT-6-6	(2) 6 gallon kettle on 36" gas boiler base	6	23

## OPERATION SHALL BE BY:

Gas operated 15 psi (103 kPa) steam boiler operating on 115 VAC, 1 phase, 50/60 Hz rated at 250,000 BTU.

- ☐ Natural gas
- ☐ L.P. gas

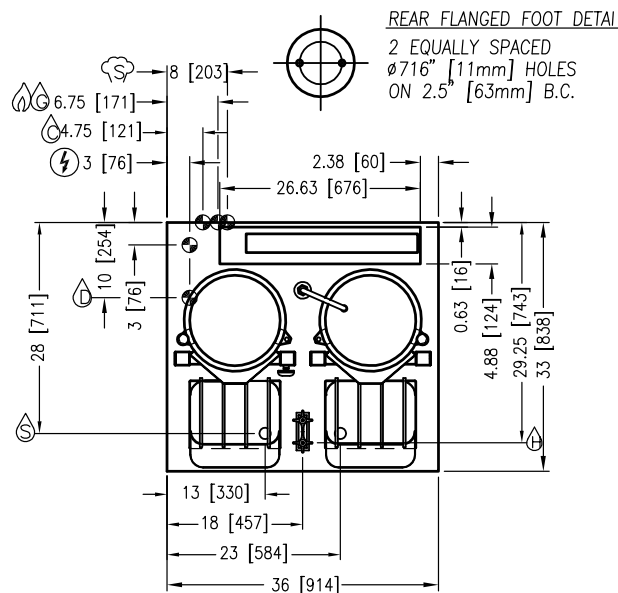
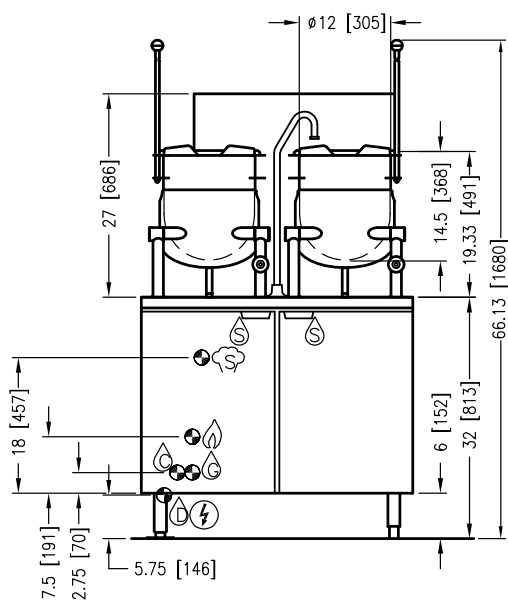
## STANDARD FEATURES:

- Water Treatment System
- Electronic ignition
- CSD-1 boiler controls
- Automatic blowdown
- Split water lines (boiler feed and condensate)

## OPTIONAL ITEMS AT EXTRA COST:

- ☐ 220-240 VAC specify voltage (GBVS-1)
- ☐ 300,000 BTU boiler
- ☐ Etched gallon markings
- ☐ Etched liter markings
- ☐ Correctional package
- ☐ Stainless steel frame (SSF-42)
- ☐ Stainless steel back (SSB-42)
- ☐ One piece stainless steel lift off cover (C-)
- ☐ Lift-out stainless steel basket strainer (SSB-6)
- ☐ Graduated measuring strip (CMS-)
- ☐ Steam take off kit (STOK)
- ☐ Water in "Y" strainer (condenser feed)
- ☐ Pour lip strainer (TKS-)





NOTE: SPLASH GUARD NOT SHOWN IN FRONT VIEW.

IN [MM]

MODEL	BOILER INPUT		SHIPPING WEIGHT	MINIMUM CLEARANCE
	BTU/HOUR	kW/HOUR		
GMT-6-6	250,000	73.3	450 lbs. (204 kg)	SIDES 3 (76mm) BACK 6 (152mm)
	300,00	87.9		

⚡ – ELECTRICAL CONNECTION: 1/2" (13 mm) conduit connection to controls. 120 VAC-60Hz-1PH. 2 Amps per compartment or as specified on data plate.

Ⓓ – DRAIN: 2" (51 mm) IPS piped to open floor drain. No solid connection.

Ⓒ – COLD WATER: 1/2" (13 mm) O.D. tubing at 25-50 PSI (170-345 kPa). (OPTIONAL)

Ⓔ – BOILER FEED WATER: 1/2" (13 mm) O.D. tubing at 25-50 PSI (170-345 kPa). (140,000 BTU BOILER)

Ⓗ – HOT WATER: 3/8" (10 mm) O.D. tubing at 25-50 PSI (170-345 kPa)

Ⓕ – GAS CONNECTION: 3/4" (19 mm) IPS supply line required.

Ⓔ – STEAM TAKE-OFF CONNECTION: 3/4" (19 mm) IPS optional to operate adjacent equipment.

Ⓔ – SINK DRAIN: 1 1/8" O.D. tubing

#### WATER QUALITY STATEMENT

Water is the essential ingredient in steam equipment, water quality is the major factor affecting the performance of your appliance. Crown Steam Group offers a Comprehensive Water Treatment System which exceeds our minimum water requirements. Proof of installation and proper cartridges replacement is required for warranty coverage. Water supply to Crown Steam Group steamers must be within these guidelines.

Total dissolved solids.....Less than 60 PPM  
Total alkalinity .....Less than 20 PPM  
Silica.....Less than 13 PPM  
Chlorine .....Less than 1.5 PPM  
pH Factor .....6.8 - 7.3

Water which does not meet these standards should be treated with the installation of Middleby's Water Treatment System. Call 919-762-1000 if you have questions concerning your water meeting these parameters.

\*Failure or malfunction of this appliance due to poor water quality is not covered under warranty.

Reference [www.crownsteamgroup.com](http://www.crownsteamgroup.com) for complete warranty details and instructions.

**INTENDED FOR COMMERCIAL USE ONLY.  
NOT FOR HOUSEHOLD USE.**



70 Oakdale Road, Toronto ON, Canada M3N 1V9  
(919) 762-1000 [www.crownsteamgroup.com](http://www.crownsteamgroup.com)