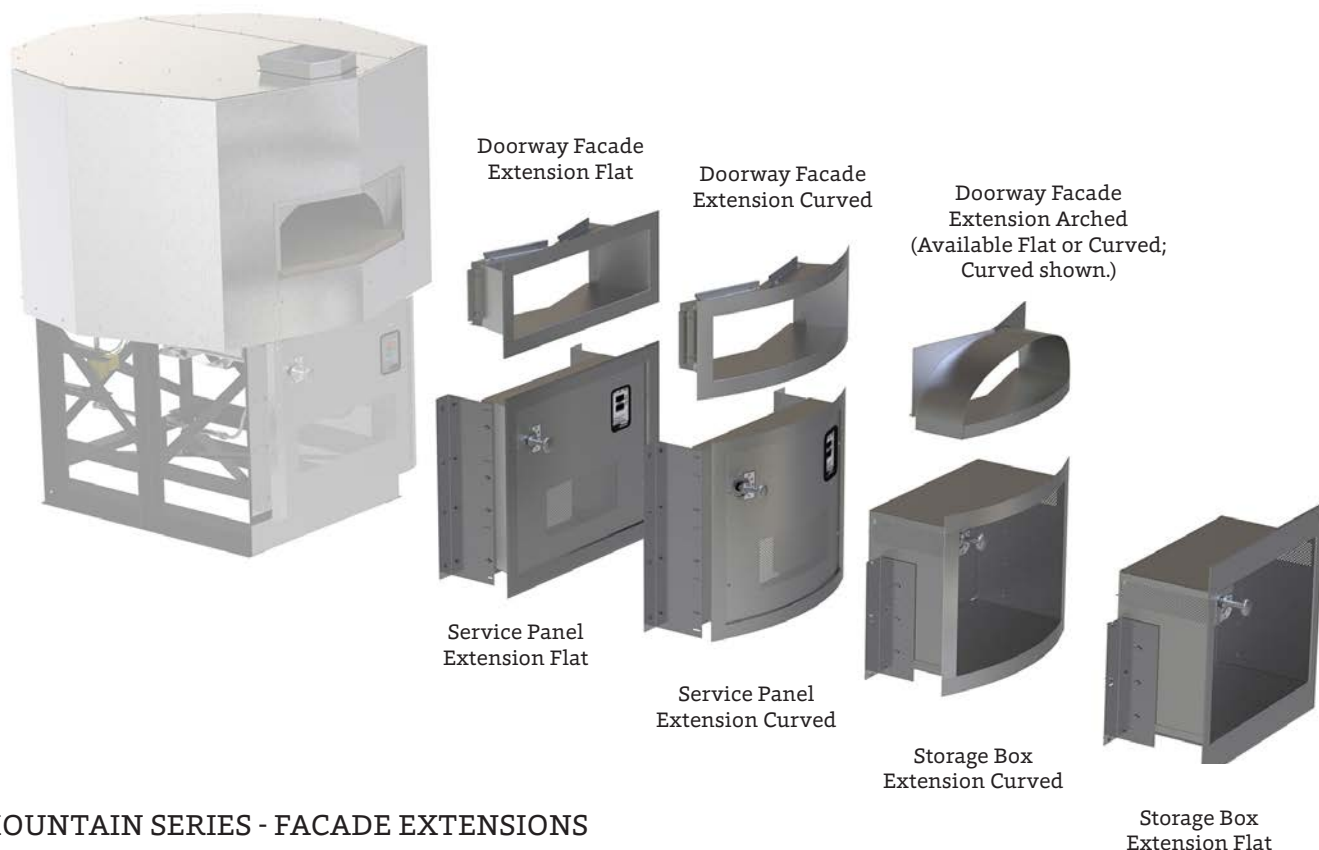




## MOUNTAIN SERIES FACADE EXTENSIONS

# Wood Stone



### MOUNTAIN SERIES - FACADE EXTENSIONS

Wood Stone offers a number of doorway, service panel and storage box options to help make oven installation into a facade wall seamless and attractive. Coordinated extensions bring the doorway of the oven into alignment with a panel or storage box below the oven. Both must be ordered at the same time to ensure proper alignment.

The face of an extension can be flat or curved. Curved extensions are available in either small or large radius dimensions (see exceptions on next page). Whatever your facade design, there's an option that's right for you.

Additionally, there's an arched doorway extension which mirrors the traditional stone hearth oven design.

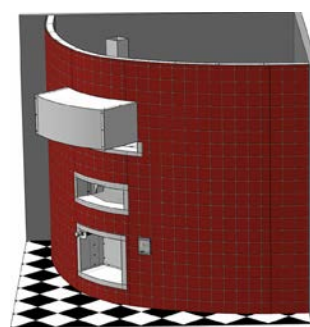
The side walls of all rectangular doorway extensions flare out slightly to enhance accessibility into the oven, and create a distinctive and beautiful look.

Lower extension options include the Service Panel Extension and the 15" deep Storage Box Extension, which offers additional storage for ovens with an Underfloor IR burner.

For ovens without an IR burner, Stand-Mounted Storage Boxes are an option. See the previous page for Mountain Series Stand-Mounted Storage Boxes.

For additional details on incorporating your oven into a facade, see the Facade Tutorials section of the Wood Stone website.

Doorway Facade and Storage Box  
Large Radius Curved Extensions  
and Curved Face Hood shown.



REVISED: SUMMER 2015

An ongoing program of product improvement may require us to change specifications without notice.

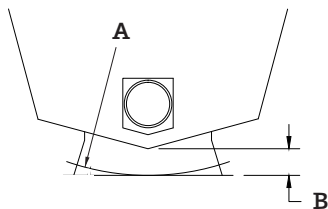
# Wood Stone

t. 360.650.1111  
tf. 800.988.8103  
f. 360.650.1166

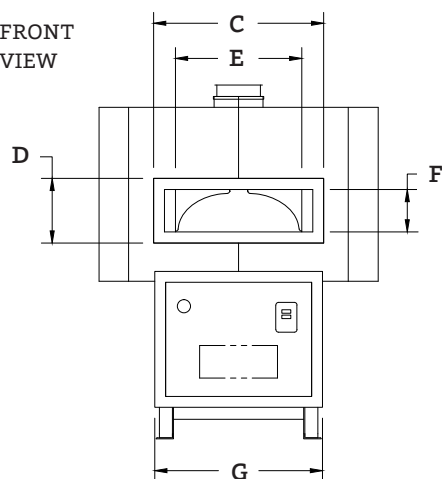
Wood Stone Corporation  
1801 W. Bakerview Rd.  
Bellingham, WA 98226 USA  
[info@woodstone-corp.com](mailto:info@woodstone-corp.com)  
[woodstone-corp.com](http://woodstone-corp.com)



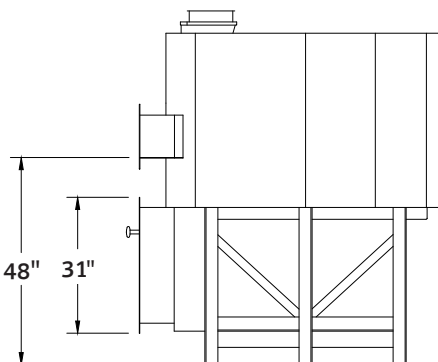
PLAN  
VIEW



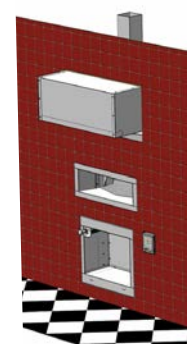
FRONT  
VIEW



SIDE  
VIEW



Doorway Facade and  
Storage Box Flat  
Extensions and  
Flat Face Hood shown.



- The addition of granite on the mantle increases dimension (F) by .75" below the doorway.
- Curved Face Extensions are available in large or small radius styles, except for the WS-MS-4, which only has a small radius option.
- WS-MS-4 models with Underfloor IR burners do not have a Storage Box Extension option.
- Double Door and Viewing Window options (not available on WS-MS-4 models) affect some dimensions. Call for details.

					Upper Extension				Lower Extension	
			Radius of Curved Extension	Oven Face to Extension Face	Doorway Frame <sup>1</sup> Width (C) x Height (D)		Doorway Opening Width (E) x Height (F)		Width of Service Panel or Box Frame	
Extensions			A	B	C	D	E	F	G	
WS-MS-4	Flat	Doorway / Service Panel <sup>2</sup>	-	6.5"	28"	15"	19.5"	10"	33.5"	
		Doorway Arched		6"	-	9.5"				
	Small Radius	Doorway / Service Panel <sup>2</sup>	34.5"	10"	28.5"	15"		10"		
WS-MS-5	Flat	Doorway / Service Panel or Box	-	6"	39"	15"	29"	10"	38.5"	
		Doorway Arched		5.5"	-	-				
	Small Radius	Doorway / Service Panel or Box	39"	7.5"	39"	15"			35"	
		Doorway Arched		7"	-	-				
	Large Radius	Doorway / Service Panel or Box	57"	6"	37.5"	15"			35.5"	
		Doorway Arched		5.5"	-	-				
WS-MS-6	Flat	Doorway / Service Panel or Box	-	6"	45.5"	15"	35"	9-1/2"	45"	
		Doorway Arched		5.5"	-	-				
	Small Radius	Doorway / Service Panel or Box	44.5"	7.5"	45"	15"			41.5"	
		Doorway Arched		7"	-	-				
	Large Radius	Doorway / Service Panel or Box	65.5"	6"	43.5"	15"				
		Doorway Arched		5.5"	-	-				
WS-MS-7	Flat	Doorway / Service Panel or Box	-	6"	52"	17"	41"	11.5"	47.5"	
		Doorway Arched		5.5"	-	-		12"		
	Small Radius	Doorway / Service Panel / Box	52"	8.5"	52"	17"		11.5"	47"	
		Doorway Arched		8"	-	-				
	Large Radius	Doorway / Service Panel or Box	75.5"	6"	50"	17"				47.5"
		Doorway Arched		5.5"	-	-				

Dimension tolerance  $\pm 1/2"$

<sup>1</sup> Doorway Facade Extension Arched does not have a frame.

<sup>2</sup> WS-MS-4 Models without Underfloor IR burners do have a Storage Box Extension option.