

Champion[®]

The Dishwashing Machine Specialists

PROJECT: _____

ITEM # _____ QTY: _____

MODEL # _____

AIA # _____ SIS # _____

UH 130B MAX

UNDERCOUNTER HIGH TEMPERATURE



Rendered image is for general visual representation only. Please refer to specifications for the latest detailed product information.

OPTIONS & ACCESSORIES

- Additional Dish Racks
- 17" Stand Stainless Steel
- 8" Leg Stand (see undercounter accessories for more detail)
- 3 Phase Connection (prewired at factory)
- 1" Roller Kit (includes 4 casters)
- Power cord kit
- Chemical alarm kit (mounted)
- Drain water tempering kit (unmounted)

STANDARD FEATURES

- **Multi-Level Racking System** allows for maximum flexibility and increases wares capacity simultaneously washing dishes, cutlery and utensils
- **Wash Refresh** – Automatically drains the water for the next cycle, ensuring heavily soiled wares are washed with new fresh water
- **Energy Star[®] Certified**
- **Multi Power** – this model is 208–240 volts and can convert from single to three phase in-field with ease. This “all-in-one” machine is for all applications
- **StemSure™** – Soft start to protect glasses and dishes from chipping and breaking
- **Rinse Sentry** – extends the cycle time to ensure 180°F+ (82°C) final rinse
- **Extended Wash Button** ensures stubborn residues are removed
- **Built-In Electric Booster**
- **2 kW Tank Heater** maintains optimum wash temperatures
- **316 Stainless Steel Tank** for improved corrosion resistance, an industry exclusive, all 130, 230 and 330 tanks are stainless steel
- **15-3/4" Overall Chamber Height With Two Interior Racks**
- **Quiet Double - Wall Construction**
- **Pumped Drain**
- **Detergent And Rinse Pumps Standard**
- **Control Mounted Prime Switches For Chemical Pumps**
- **Pumped Final Rinse**
- **Stainless Steel Top & Sides Included**
- **High Pressure Wash Pump, 1 Hp**
- **Delime Feature Built Into Controls For Ease Of Use**
- **Service Diagnostics For Easy Troubleshooting**
- **Digital Controls**

SPECIFIER STATEMENT

Specified unit will be Champion model UH130B MAX multi-level racking system undercounter high temperature dishwashing machine with built-in booster heater. Features 288 second total cycle, Rinse Sentry, detergent and rinse aid pumps, stainless steel top and side panels. Constructed of stainless steel.

1 year parts and labor warranty.

Note: Vent hood is not recommended, as unit does not produce excessive steam.

Note: Always follow local building code guidelines.



In the USA:

3765 Champion Blvd, Winston-Salem, NC 27105
Tel: (336) 661-1556 Fax: (336) 661-1979
www.championindustries.com

In Canada:

2674 N. Service Rd., Jordan Station, Ontario, Canada LORISO
Tel: (905) 562-4195 Fax: (905) 562-4618
www.championmoyerdiebel.ca

SPECIFICATIONS

Capacities

*Racks per hr.	24
Cycle time (seconds)	288

Motor Horsepower

Wash	1
------	---

Water Consumption

U.S. Gal./Imperial Gal. (Max. use) per hr.	18.5/15.4
---	-----------

U.S. Gal./Imperial Gal. per rack	0.84/0.69
-------------------------------------	-----------

Temperature °F/°C

Wash	150/66
Rinse	180/82

Heating

Tank heat, electric, (kW)	2.0
Electric booster (kW) required for 70°F/39°C rise	6

Time Cycle in seconds

Wash	227
Rinse	19
Sanitary Dwell	42
Total cycle	288

Standard 20" x 20" Rack Complement

Dish	1
Open	1

*Excludes 30 second NSF load/unload time

Utilities

Electrical

208-240/60/1; 3 wire plus ground, (See box).
208-240/60/3; 4 wire plus ground, (See box).
Field convertible to accept 3 phase power, see service manual for details

1 Hot Water

1/2" supply; 110°F/43°C Min. hot water connection for 70°F/39°C rise booster.
Machine equipped with 3/4" garden hose connection provided. Flow pressure: 25-95 psi.

3 Pumped Drain

5/8" [15.9] I.D. flexible reinforced hose, 6 ft. [1829] long.
Max. drain ow 15 US gpm. [12.5 imp gal] Max. drain height 3 ft. [914]

Complies with ANSI/ASSE 1004 Sections 1.4.3 & 1.4.4

UH130B MAX with 70°F/39°C Rise Booster, 6kW

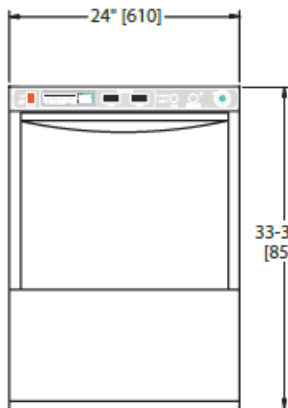
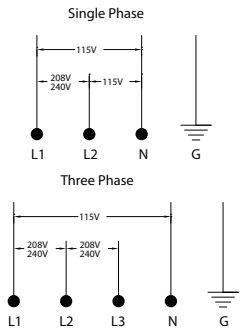
Elec. Specs	Rated Amps	Minimum Supply Ckt. Conductor Ampacity	Maximum Overcurrent Protective Device
208-240/60/1	32-36	40	40
208-240/60/3	22-24	30	30

Warning: Plumbing, electrical connections should be made by qualified personnel who will observe all the applicable plumbing, sanitary and safety codes and the National Electrical Code.

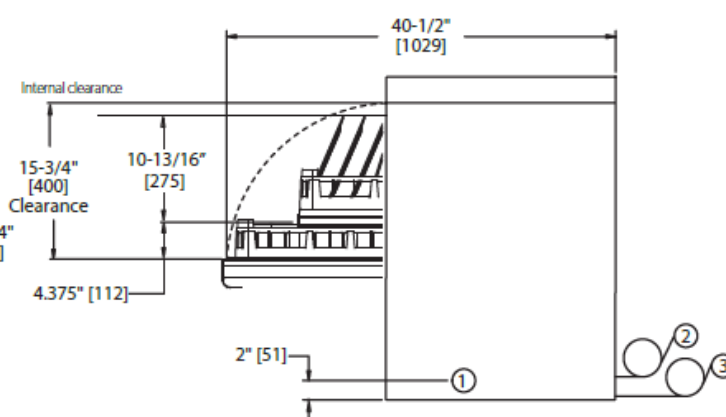
Plumbing Notes: Because of the variation in house-supplied steam and water pressures, steam and water pressure regulating valves (PRVs) may be needed. (Water PRV is standard on machines with booster.) The PRVs can either be purchased from Champion or obtained locally.

Champion does not endorse using on-demand (tankless) water heating systems, as well as PEX and other plumbing materials that may limit water flow, as these could impair machine performance. For optimal results, we recommend using appropriately sized conventional hot water tanks and standard copper water supply lines that adhere to our specifications. Not following these recommendations may void the manufacturer's warranty.

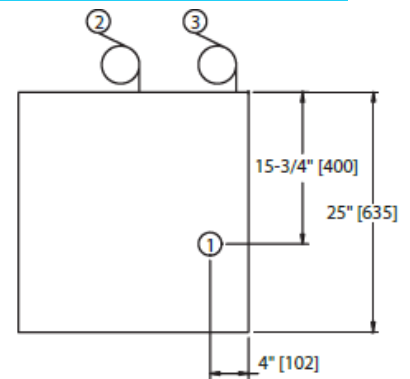
Water hardness of 3 grains/US Gal (0.83 Imp Gal) - 5.3 Mg/L or less



Front View



Side View



Plan View

In the USA: 3765 Champion Blvd, Winston-Salem, NC 27105 | Tel: (336) 661-1556 Fax: (336) 661-1979 | www.championindustries.com

In Canada: 2674 N. Service Rd., Jordan Station, Ontario, Canada LORISO | Tel: (905) 562-4195 Fax: (905) 562-4618 | www.championmoyerdiebel.ca