



**"WE MAKE THE KITCHEN BETTER!"**

**ATOSA USA, INC.**

**Toll Free: 855-855-0399 Email: info@atosausa.com**

www.atosa.com | www.atosausa.com

California, Colorado, Florida, Georgia, Illinois,  
New Jersey, Ohio, Texas, Washington

# Back Bar Coolers

## MODELS:

**MBB23GR / MBB48GR / MBB59GR / MBB69GR /  
MBB90GR**

### Standard Features

- Stainless steel exterior & interior
- Electronic Temperature Controller
- Maintains temperatures between 35°F – 38°F
- Heavy duty Embraco compressor with environmentally friendly R290 refrigerant
- Slide out compressor assembly for easy maintenance
- Recessed door handle(s)
- Interior light(s)
- Magnetic door gasket(s) standard for positive door seal
- Door lock(s) standard
- Pre-installed epoxy coated shelves
- Pre-installed casters
- All models in this series, except MBB23GR can be fitted with 1.2", 1.5", 4", or 5" casters



**MBB23GR**



**MBB48GR**



**MBB59GR**



**MBB90GR**



**MBB69GR**

For the best results of food preservation we recommend setting your refrigerator between 35 °F to 38 °F

1. Don't forget to leave the unit some room to breathe!
2. Please clean the condenser frequently to give the unit more fresh air.



**2 YEAR PARTS AND LABOR WARRANTY  
5 YEAR COMPRESSOR PART WARRANTY**





**"WE MAKE THE KITCHEN BETTER!"**

**ATOSA USA, INC.**

**Toll Free: 855-855-0399 Email: info@atosausa.com**

www.atosa.com | www.atosausa.com

California, Colorado, Florida, Georgia, Illinois,

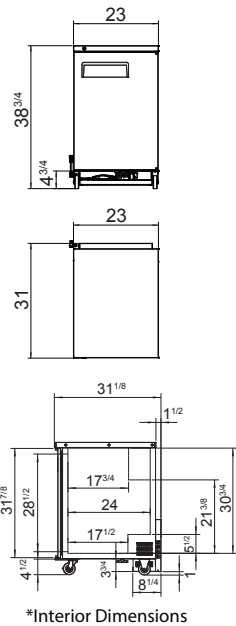
New Jersey, Ohio, Texas, Washington

## SPECIFICATIONS

Models	Door	Capacity (Cu.Ft.)	Shelves	Casters (inch)	Rated Current (A)	Voltage (V/Hz/Ph)	HP	Refrigerant	Exterior Dimensions (inch)	Net Weight (lb)	Gross Weight (lb)
MBB23GR	1	8.2	2	3.5	2.3	115/60/1	1/7	R290	23×29 <sup>1/2</sup> ×38 <sup>4/5</sup>	170	207
MBB48GR	2	13.4	4	2.5	2.3	115/60/1	1/7	R290	48×28 <sup>1/10</sup> ×40 <sup>1/8</sup>	192	240
MBB59GR	2	17.3	4	2.5	2.3	115/60/1	1/6	R290	57 <sup>4/5</sup> ×28 <sup>1/10</sup> ×40 <sup>1/8</sup>	214	262
MBB69GR	2	21.5	4	2.5	2.3	115/60/1	1/6	R290	68×28 <sup>1/10</sup> ×40 <sup>1/8</sup>	238	295
MBB90GR	3	30.1	6	2.5	2.8	115/60/1	1/6	R290	89 <sup>3/10</sup> ×28 <sup>1/10</sup> ×40 <sup>1/8</sup>	295	370

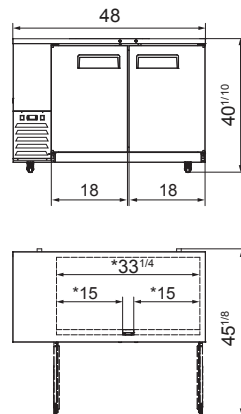
## PLAN VIEW

**MBB23GR**

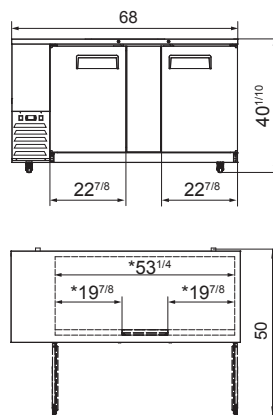


Note: The rear lower skirt extends 3-3/4" downward behind the casters. This design prevents caster removal.

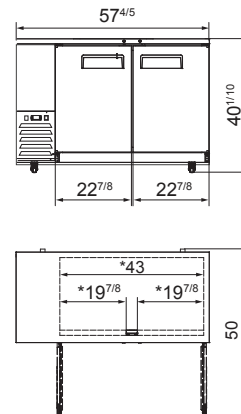
**MBB48GR**



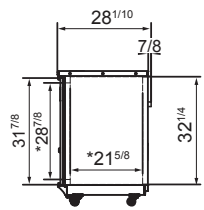
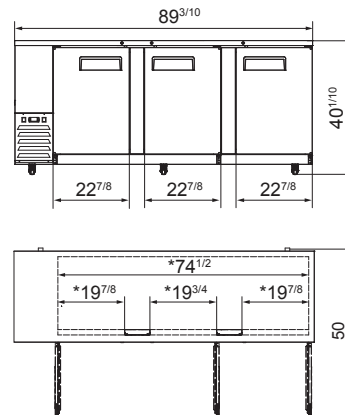
**MBB69GR**



**MBB59GR**

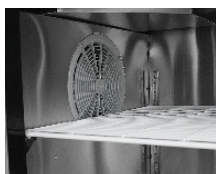


**MBB90GR**



\*Interior Dimensions

Epoxy shelves



Door lock



Temperature control



Recessed handles



**NEMA 5-15P**

