

GENERAL INFORMATION

Project Name: _____
 Item: _____
 Quantity: _____
 Model: DECO-335-N
 Length: _____

GENERAL SPECIFICATION

Materials

- 1" x 2" Stainless Steel Rectangular Tubing Uprights
- 1/2" Tempered Glass Front and Top
- Polished Exposed Glass Edges
- Mounting Flange

Construction

- 54" Maximum Post Spacing With 1/4" Tempered Glass
- 66" Maximum Post Spacing With 3/8" Tempered Glass
- 72" Maximum Post Spacing With 1/2" Tempered Glass
- NSF Standard 2 Construction
- Shipped Fully Assembled

TUBE OPTIONS

- ☐ 1" Square
- ☐ 1-1/2" Square

TUBE FINISH

- ☐ #4 Brushed Stainless Steel
- ☐ #8 Mirror Polished Stainless Steel
- ☐ Powder Coated - Color _____

GLASS OPTIONS

- ☐ 1/4" Tempered Glass
- ☐ 1/2" Tempered Glass
- ☐ 3/8" Tempered Glass
- ☐ 1/4" Tempered Glass End Panel

TOP SHELF OPTIONS

- ☐ 1/2" Tempered Glass
- ☐ 3/8" Tempered Glass
- ☐ #8 Mirror Polished Brass
- ☐ Stainless: ☐ #4 Brushed ☐ #8 Mirror Polished
- ☐ Powder Coated Color _____
- ☐ Solid Surface Material Color _____

FITTING FINISH

- ☐ #4 Brushed Stainless Steel
- ☐ #8 Mirror Polished Stainless Steel
- ☐ Powder Coated - Color _____

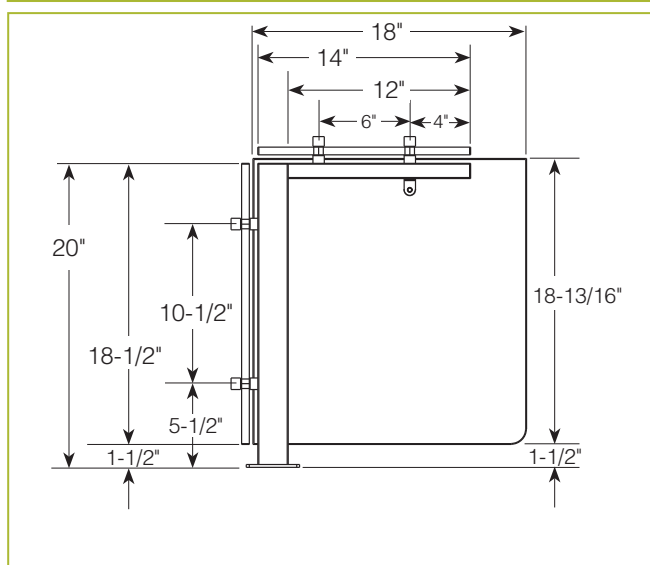
FITTING OPTIONS

- ☐ Round Flange

Printed in the U.S.A. (December 2018) BSI, LLC
 Specifications subject to change without notice.

DECO-335-N

Operator-Serve Food Shield



To meet NSF guidelines, end panels are included on all BSI quotations unless specifically excluded.

LIGHT AND WARMER OPTIONS

- ☐ LED Light Unit
- ☐ Linear T-5 Fluorescent Unit
- ☐ BSI Stealth™ Linear Heat Only Unit
- ☐ BSI Stealth™ Linear Heat and Light Combo Unit (Fluorescent)
- ☐ BSI Stealth™ Linear Heat and Light Combo Unit (LED)
- ☐ BSI Stealth™ Linear Double Heat and Light Combo Unit (Fluorescent)
- ☐ BSI Stealth™ Linear Double Heat and Light Combo Unit (LED)
- ☐ Hatco® Brand Heat Only Unit
- ☐ Hatco® Brand Heat and Light Combo Unit

Structural enhancements or mounting might be required to support heat light options.

* Approval Drawings Required



Rv. 14