



4184 E. Conant St.
Long Beach, CA 90808
Tel. 800-500-3519
Fax. 310-900-1066
www.turboairinc.com

Project :

Model # :

Item # :

Qty :

Available W/H :

Approval :

Compartment Sinks (One Drain Board)

HIGH QUALITY 304 STAINLESS STEEL

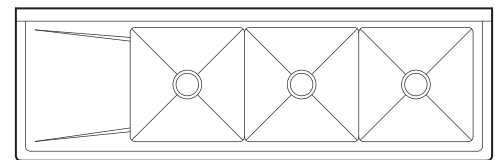
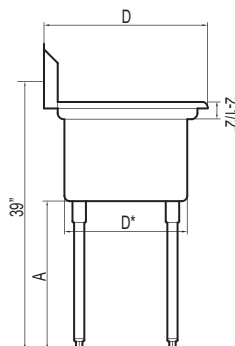
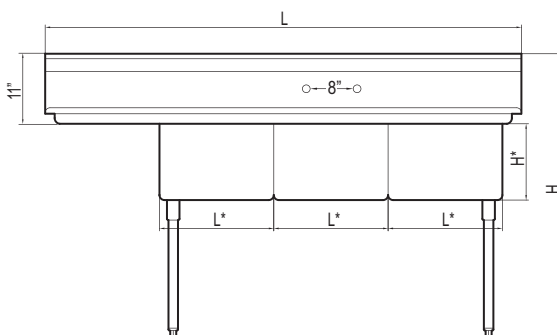


* Faucet sold separately

**Model : TSA-3-12-L1
TSA-3-L1 / TSB-3-L2**

FEATURES & BENEFITS

- Entire assembly is fused, shielded and polished providing a one-piece seamless sink unit
- Welded areas are high-speed belt blended to match adjacent surfaces with the continuity of a satin finish
- All sink compartments are covered on a full 5/8" radius and constructed using state of the art seamless welding techniques
- Die-stamped creased drain boards for positive drainage
- Swirl away bowl drainage
- Galvanized legs and gussets are standard on all models
- Our strainers are built with brass nuts instead of aluminum (standard)
- Adjustable ABS bullet feet
- Crating service available
- Stainless steel legs available (optional)



(unit : inch)

Model	Ga.	Bowl Size (L* x D* x H*)	Length	Depth	Height	Leg(A)	# of Faucet Accepted	Net Weight* (lbs.)
TSA-3-12-L1	18	18 x 18 x 12	75	24	44 1/2	21 1/2	1	77
TSA-3-L1	18	18 x 18 x 11	75	24	44 1/2	22 1/2	1	75
TSB-3-L2	16	24 x 24 x 14	99	30	44 1/2	19 1/2	2	147

Ver.20200922

Information and specifications are subject to change without notice.

* All net weights are approximated. Crafting fee will be added for shipping via common carriers (Please confirm at the time of the purchase).

Turbo air

**GERMAN
KNIFE**

RADIANCE

Turbo air

Texaking