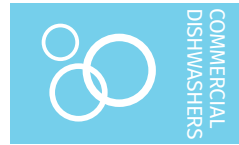




Project _____
AIA # _____ SIS # _____
Item # _____ Quantity _____ C.S.I. Section 114000



PW12n-ADV ELECTRIC **advansys** High Temperature Ventless Pot, Pan & Utensil Washer



SPECIFIER STATEMENT

Specified dishwasher will be Hobart PW12n-ADV Advansys™ ventless Pot/Pan/Utensil Washer, front loading with single piece vertical lift door, (12) pan capacity, Complete Delime™ with Auto Dispensing and Booster Guard™, touchscreen controls with WiFi connectivity, NSF pot and pan rating for 2, 4, & 6-minute cycles, up to (13) cycles/hour, includes: (1) flat grid, (1) tray rack & (1) flat bottom rack, high temperature sanitizing with Sense-A-Temp™ 70° rise booster, pumped drain, 1.2 gallons per cycle, pumped final rinse, stainless steel construction, X-shaped upper & lower wash arms, service diagnostics, 208/240v/60/3-ph & 480v/60/3-ph.

1 year parts and labor warranty.

STANDARD FEATURES

- + Timed wash cycles; cycles per hour: 13 (2 minute wash), 9 (4 minute wash), 7 (6 minute wash)
- + 1.2 gallons of water per cycle
- + Ventless Energy Recovery
- + Door lock
- + Factory installed drain water tempering
- + Complete Delime™ with Delime Notification, Auto Dispensing and Booster Guard™
- + NSF pot and pan rating for 2, 4, & 6-minute cycles
- + Hot water sanitization machine
- + Sense-A-Temp™ booster heater capable of 70° rise
- + External rack holder
- + Front loading, single piece vertical lift door
- + Chamber accepts 12 full-sized sheet pans, or (1) 140 quart mixing bowl
- + Stainless steel deep drawn tank
- + X-shaped revolving, interchangeable upper and lower anti-clogging wash arms
- + Revolving, interchangeable upper and lower rinse arms
- + Removable stainless steel strainer pans and scrap basket
- + User-friendly smart touchscreen controls
- + WiFi connectivity
- + SmartConnect app and cloud with machine status, temperature logs, error code reporting, and cost, consumption and usage analysis
- + Service diagnostics
- + 3rd party power supply for chemical feeder
- + Temperature alerts and lock outs (field activated)
- + Pumped drain
- + Automatic fill
- + Pumped rinse
- + Scheduled fill time and scheduled drain time (field activated)
- + 28"H x 26.19"W door opening
- + Rack size 25.30"W x 29.65"D x 4.95"H

OPTIONS & ACCESSORIES (Available at extra cost)

- ☐ Steam pan rack
- ☐ Water hammer arrestor kit
- ☐ Spray hose (8')
- ☐ Seismic feet with holes
- ☐ Flange feet for weld down
- ☐ Security package
- ☐ Combination rack

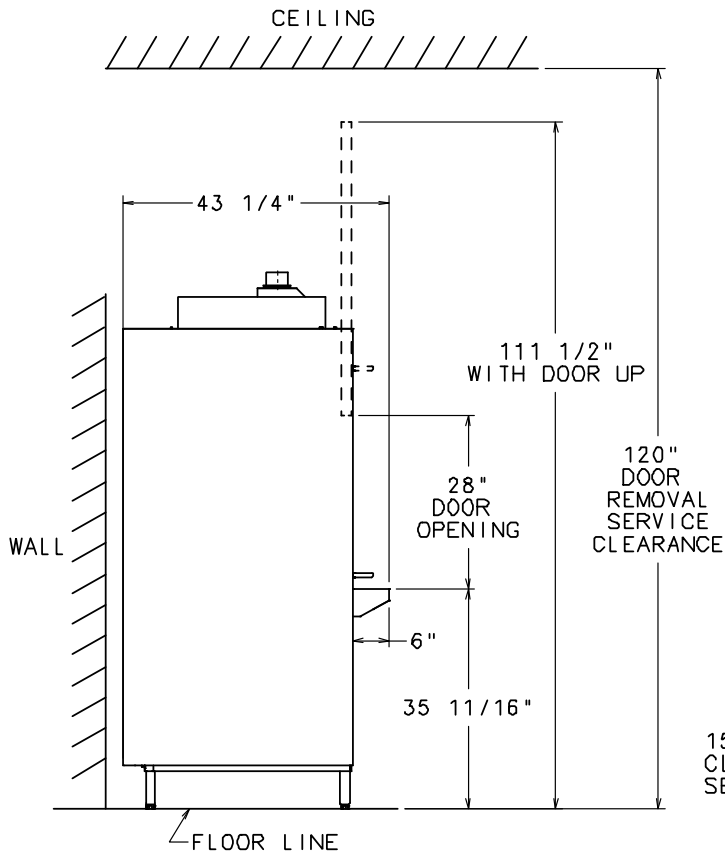
PWN SERIES – PW12n-ADV **advansys**

Approved by _____ Date _____ Approved by _____ Date _____

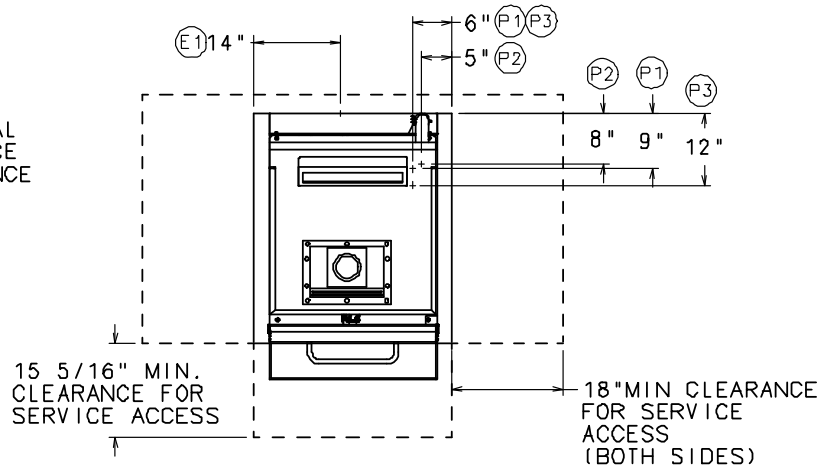


PW12n-ADV *advansys* ELECTRIC

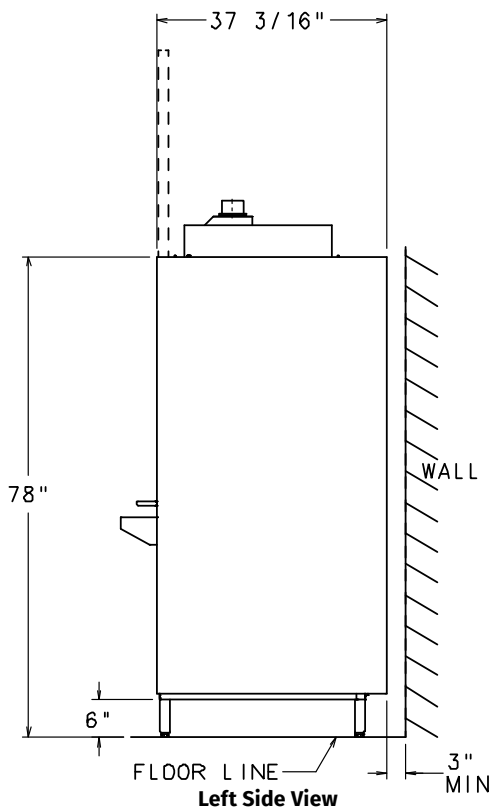
High Temperature Ventless Pot, Pan & Utensil Washer



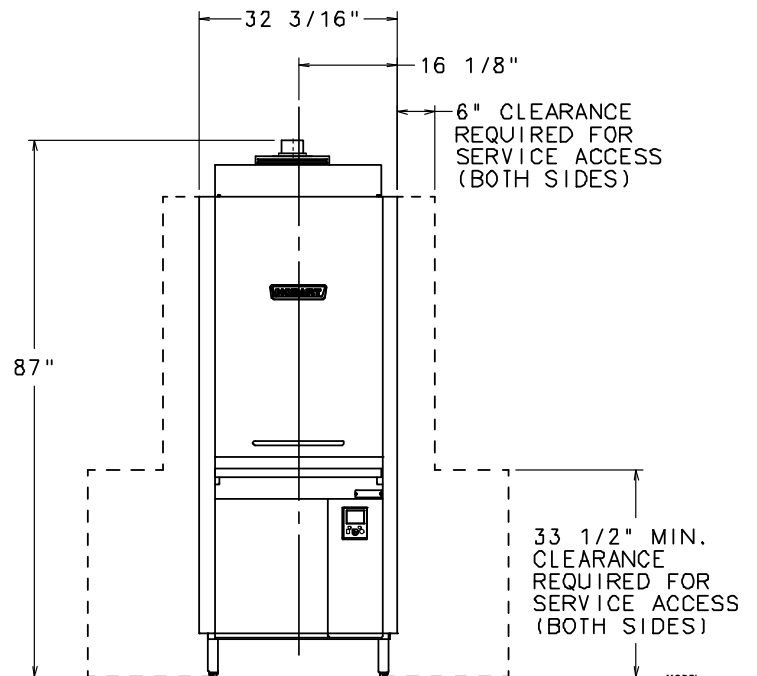
Right Side View



Top View



Left Side View



Front View

MODEL:
PW12n-ADV
00-975043
REV A2



PW12n-ADV *advansys* ELECTRIC

High Temperature Ventless Pot, Pan & Utensil Washer

LEGEND

Electrical Connections	
E1	Electrical connection (including electric heat): 1-7/8" conduit hole, 7" AFF.
Plumbing Connections	
P1	Hot water connection incoming: 110°F water minimum. 3/4" female garden hose fitting on 9' long hose supplied with machine. 8" AFF.
P2	Drain connection: 7/8" barb fitting, 28" AFF. 8' long 5/8" hose supplied with machine.
P3	Cold water connection incoming: 90°F water maximum (65°F optimal), 3/4" female garden hose fitting on 9' long hose supplied with machine. 8" AFF.

WARNING: Electrical and grounding connections must comply with the applicable portions of the National Electrical Code and/or other local codes.

Plumbing connections must comply with applicable sanitary, safety and plumbing codes. Drain and fill line configurations vary, some methods are shown on this drawing.

Plumbing Notes: Required minimum flowing water pressure to the dishmachine in 15 PSIG. If pressures higher than 65 PSIG are present, a pressure regulating valve may be installed in the water line to the dishmachine (by others).

Recommended water hardness to be 3 grains or less for best results.

Pressure gauge not required on pumped rinse machine.

Miscellaneous Notes: Backflow prevention provided by NSF-approved air gap device.

Single point electrical connection machine.

Vent hood is not required due to internal condensing system.

All dimensions taken from floor line may increase 1-1/2" depending on leg adjustment.

For optimal performance, Hobart recommends maintaining a dishroom temperature of 65°F (18°C) or higher, as lower temperatures may hinder the machine's capacity to operate effectively (with lower performance as ambient temperature decreases).

SPECIFICATIONS

Capacities

Wash Time Settings (minutes)	2, 4, 6
Cycles per Hour	13 (2 min. wash), 9 (4 min. wash), 7 (6 min. wash)
Tank Capacity – Gallons	21

Motor Horsepower

Wash	4.0
Rinse	0.36
Drain	0.21
Blower	0.06

Water Consumption

U.S. Gallons per Cycle	1.2
U.S. Gallons per Hour (maximum use)	17.8
Peak Drain Flow – U.S. Gallons (gallons per minute)	21.0

Temperatures °F

Wash	150
Rinse	180

Heating

Tank Heat, electric (kW)	16.4
Electric Booster (kW)	16.4

Standard 20" x 20" Rack Complement

Tray Rack (12 pan each)	1
Flat Grid	1
Flat Bottom	1

Shipping Weight (approximate) 595 lbs.

Crated Dimensions 88"H x 36"W x 40³/₄"D

Electrical Specifications			
Voltage	Rated Amps	Minimum Supply Circuit Ampacity	Maximum Protective Device
208/60/3	49.2	60	60
240/60/3	54.5	70	70
480/60/3	29.7	35	35

Dishmachine not provided with internal GFCI protection.

Approximate Heat Gain to Space without Vent Hood	
Latent	Sensible
8,500	9,600