



SHREDDING DISC SH-1 · 1MM. · 1/32" · SCREWLESS



P/N. 1010318

SPECIFICATIONS

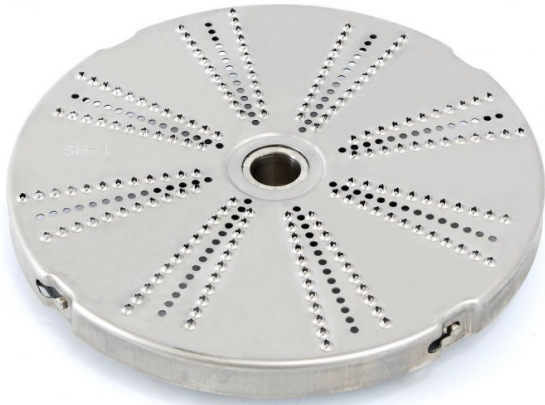
Disc diameter: -- mm / -- "

External dimensions (WxDxH)

- ✓ Width: 8 "
- ✓ Depth: 8 "
- ✓ Height: 1.4 "

Crated dimensions

8.3 x 8.3 x 1.4 "
Gross weight: 1.0 lbs.



SALES DESCRIPTION

Shredding discs for Sammic vegetable slicers and combi vegetable slicer & cutters

- ✓ Screwless. Detachable without tools.
- ✓ Perfect hygiene.
- ✓ Maximum safety for the user.
- ✓ Shredding discs for vegetables, cheese, bread, nuts, almonds, etc.
- ✓ Grating discs for grating bread, hard cheese, chocolate, etc.
- ✓ Designed to obtain very precise cuts.
- ✓ Detachable with no need of accessory tools. This avoids the accumulation of food remains.
- ✓ Dishwasher-safe.
- ✓ Available in various sizes.
- ✓ **For CA-31/41/3V/4V/301/300/401/400/601 slicers.**
- ✓ **For CK-35V/38V/45V/48V/301/302/401/402 combi models.**



sammic | www.sammic.us
Food Service Equipment Manufacturer

usa@sammic.com
1225 Hartrey Avenue
60202-1056 Evanston, IL

phone +1 (224) 307-2232
toll free +1 844 275 3848



Project	Date
Item	Qty
Approved	

product sheet
updated 02/04/20

DYNAMIC PREPARATION
COMMERCIAL VEGETABLE PREPARATION MACHINES