

AMCO® ACCESSORIES

Shelf Inlays

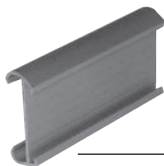
- Add a solid work surface to your shelving unit



Plastic Plus® and New Era™ Label Holder

- Slotted snap-on grey label holder for paper inserts — fits all shelf lengths

Model No.	Length (In.)	For Labels (In.)
LP6403	3	1 x 3



Label Holders for New Era™, Solid Stainless Steel, Wire, Plasteel® and Dunnage Shelves

- Slotted — affixes to shelf with self-adhesive strip
- Insert paper label from side
- Available in grey only



Length Model No.	Length (In.)	Fits Shelf Length (In.)	For Labels W x L (In.)
SHLAB	6	All	.75 x 6

Clear Covered Label Holder

- Insert paper label from side
- Label is protected by clear plastic face



Model No.	Length (In.)	Fits Shelf Width (In.)	For Labels W x L (In.)
SHLAB2	5.5	All	1 x 5.5
SHLAB3	3	All	1 x 3

Shelf Ledges

Model No.	Fits Shelf Length (In.)	Weight (Lb.)
LU12	12	.5
LU18	18	.5
LU21	21	.75
LU24	24	1
LU30	30	1.5
LU36	36	1.5
LU42	42	2
LU48	48	2
LU54	54	2
LU60	60	2.5
LU72	72	3



AMCO® Shelf Ledges

- 6" high ledges mount to shelf posts to keep goods from falling off the back or sides of shelves
- Use with all styles of shelves
- Can be stacked on top of each other for additional height — or mounted below shelves to reduce height

Plastic Plus® Enclosure Panels

Model No.	Type	W x L (In.)	W x L (mm.)	Weight (Lb.)	Weight (Lb.)
PPEP1864GRX	Side Panel	18 x 64	455 x 1625	8	4
PPEP2464GRX	Side Panel	24 x 64	610 x 1625	10	4.5
PPEP3664GRX	Back Panel	36 x 64	915 x 1625	18	8
PPEP4864GRX	Back Panel	48 x 64	1220 x 1625	22	10
PPEP6064GRX	Back Panel	60 x 64	1525 x 1625	27	12



Shelf Dividers

- Maintain separation of goods on wire shelves
- Order by shelf width
- Height: 8"



Model No.*	Length (In.)	Fits Shelf Length (In.)	Weight (Lb.)
SDU12	11	12	1
SDU18	17	18	1
SDU21	20	21	1.5
SDU24	23	24	2

*Add suffix C to Model No. for Plating Plus™, add PG for Polygard® (Blue) finish.