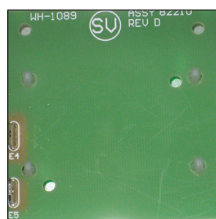


Thermostat



Thermostat Knob



Circuit Board



Cut-off Rod

Fuse Holder



Fuse



Lighted Rocker Switch



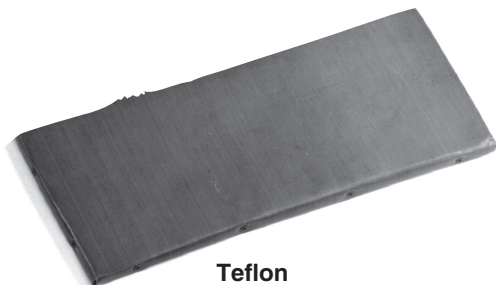
Hot Plate with Heating Element



Heating Element



Core Adapter/Wing Unit



Teflon Cover

Film Wrapping Machine Replacement Parts

100% Pre-Tested!

Winholt offers a complete line of high quality replacement parts for all wrapper models. Our parts are fully compatible with other popular brands.

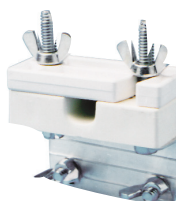
Model Number	Ordering Number	Description of Parts	Dimensions
WHSS-CBD-A	695885	Circuit Board - E4 & E5 terminals for connecting wires	2½" x 2½"
WHSS-COR-A	687025	Cut-off Rod - Heats film to precise, necessary temperature	7/16" x 23"
WHSS-TM	113267	Thermostat - Regulates the heat for the Hot Plate	½" x ½" x 2¼"
WHSS-TK	113259	Thermostat Knob	¼" I.D.
WHSS-FUS1	113152	Fuse	9/32" x 1¼"
WHSS-FHD	113144	Fuse Holder	¼" x 1¼"
WHSS-HP6	113161	Hot Plate with Heating Element - Seals film securely	6" x 15"
WHSS-TC6	113232	Teflon Cover - For Hot Plate	6" x 15"
WHSS-E	113128	Heating Element - For Hot Plate	9/32" x 11¼"
WHSS-A	113056	Film Axle - Aluminum film core axle	¾" x 22"
WHSS-CAP	113081	Core Adapter Pin Unit	3" I.D. Roll
WHSS-CAW	113099	Core Adapter Wing Unit	3" I.D. Roll-Threaded
WHSS-RS	113224	Lighted Rocker Switch	1¼" x ½"
WHSS-BB	113072	Bearing Blocks - Regulates film tension	Bearing Blocks
WHSS-PR	135087	Plate Retainers - Holds element to hot plate	4" x 11-1/2"
WHSS-EWC	113136	Electric Wire	Per Foot

Freight Class:70

Electric Wire



Film Axle



Bearing Blocks



Express Ship.
See Page 148 for details.

UPS and the UPS brandmark are trademarks that are used with permission by the owner, United Parcel Service of America, Inc. All rights reserved.

