



Model: _____ Item #: _____ Date: _____

Project: _____ Qty: _____ Approved By: _____

Remote Back Bar Coolers

Royal Series Refrigeration



BR48L-SSS-LR
shown with optional 1" top



Specifications

- | | |
|----------------------|--|
| Refrigeration | ▪ 134A refrigerant valve installed (standard) |
| | ▪ Optional 404 expansion available |
| | ▪ Thermostat not included |
| | ▪ 30°F-40°F operating range (set at 35°F) unless specified otherwise |
| Electrical | ▪ 115 V, 1 Phase, 60 Hz. |
| | ▪ Furnished with a terminal block inside the box for a hard wire connection (supplied by the end user) |
| | ▪ Dedicated 15 amp circuit recommended |
| | ▪ BR48: 1.0 amps (lights & fan) 1800 BTUs 16° - 18°F |
| | ▪ BR72: 1.5 amps (lights & fan) 2300 BTUs 16° - 18°F |
| Case Capacity | 48" (BR48) 72" (BR72) 96" (BR96) |
| | Long Neck Bottles 13 21 30 |
| | 12 oz. Cans 20 34 40 |
| | Wine Bottles 136 216 288 |
| Interior | ▪ 20 gauge stainless steel with coved corners |
| | ▪ NSF epoxy coated durable wire shelves (one bottom and two adjustable shelves per door) |
| | ▪ Floor rack per door |
| | ▪ Door opening: 19-15/16"W x 29-11/16"H |
| Exterior | ▪ Sides: 20 gauge stainless steel or black vinyl |
| | ▪ Front: 20 gauge stainless steel, black vinyl or glass |
| | ▪ Back: 20 gauge galvanized steel |
| | ▪ Top: 20 gauge galvanized steel with option of stainless |
| | ▪ Sliding Door 48" and 96" models doors only available in glass with black trim |
| Insulation | ▪ Foamed-in-place polyurethane |
| Plumbing | ▪ 1/2" drain connection required for condensation. Drain line connection will be on the same side as the refrigeration line location selected |
| | ▪ A 100V condensate evaporator pan may be used in place of a drain line but it is important to make sure you have a good location for it. Please consult with your refrigeration installation company and check local codes. |

Standard Features

- 35"H without Top, 36"H w/ Optional 1" Stainless Steel Top
- 24" Front to Back Depth (25" with Top)
- Heavy duty self-closing doors
- Models with swing doors: Stainless steel handles with built-in locks
- Models with sliding doors: Glass with black trim sliding doors
- Listed to NSF Standard 7 for Open Food Storage
- Optional 1/3 HP Condensing Unit Available Below
- Expansion Valve Installed in Unit - Type 134A, 404 Refrigerant, or R448A
- 115V, 1 Phase, 60 Hz.
- All Stainless Steel, Coved Corner Interior
- NSF Epoxy Coated Durable Shelves. (1 Bottom & 2 Adjustable Shelves Per Door)
- One Supply Hook-Up Side
- 3/8" Supply Outlets, 1/4" Supply Inlets
- 1-Year Parts Only Warranty (No Labor)
- 1-Year Compressor, (If purchased) Parts Only Warranty. (No Labor)
- NEMA 5-15P Plug Configuration

Optional Accessories

Model	Description
BS-100	6" Stainless Steel Legs (Set of 4)
BS-101	6" Stainless Steel Legs (Set of 6)
BS-102	4" Stainless Steel Legs (Set of 4)
BS-103	4" Stainless Steel Legs (Set of 6)
BS-106	Left Side Stainless Steel Kick Plate
BS-107	Right Side Stainless Steel Kick Plate
BC-130	1" Ultra Low Profile Casters w/ brakes (Set of 4)
BC-131	1" Ultra Low Profile Casters w/ brakes (Set of 6)
BC-132	2" Low Profile Casters w/ brakes (Set of 4)
BC-133	2" Low Profile Casters w/ brakes (Set of 6)
BC-134	3" Casters w/ brakes (Set of 4)
BC-135	3" Casters w/ brakes (Set of 6)
BS-148	48" Stainless Steel Front Kick Plate
BS-172	72" Stainless Steel Front Kick Plate
BS-196	96" Stainless Steel Front Kick Plate
BS-600	110V Solenoid Valve and Thermostat, Installed
BC-500	1/3 HP Condensing Unit (R134A Refrigerant)
BS-501	1/2 HP Condensing Unit (R404A Refrigerant)
BS-811	Side Guard Rail for Shelving

This equipment is intended for the storage and display of non-potentially hazardous bottle or canned products only.



CONFORMS TO UL Std 471 & NSF STD 7



Model: _____ Item #: _____ Date: _____

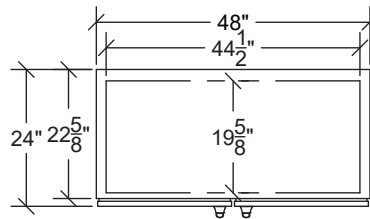
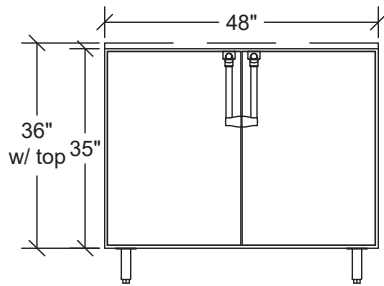
Project: _____ Qty: _____ Approved By: _____

Remote Back Bar Coolers

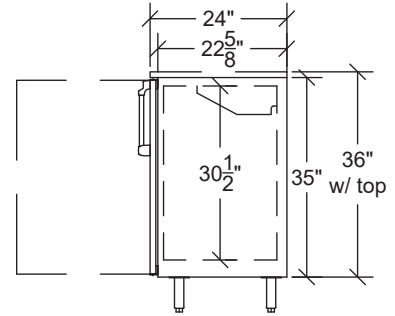
Royal Series Refrigeration

Swing Doors

Base Model	Length	Doors	Weight
BR48	36"	2	280 lbs.

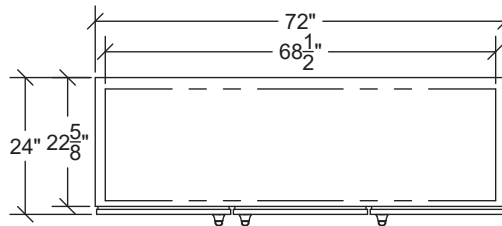
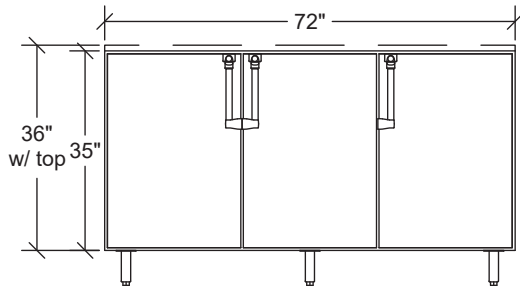


This side view applies to Swing Door Base Models BR48, BR72, and BR96



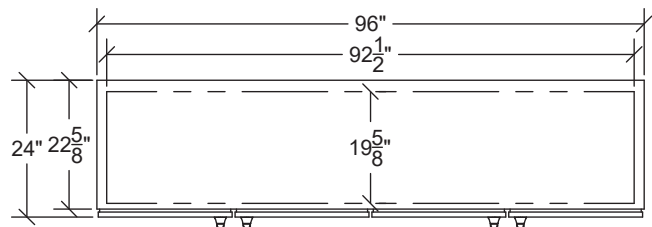
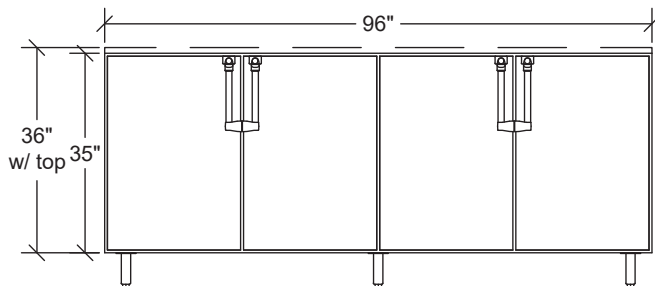
Swing Doors

Base Model	Length	Doors	Weight
BR72	72"	3	395 lbs.



Swing Doors

Base Model	Length	Doors	Weight
BR96	96"	4	510 lbs.



NOTE: Optional casters raise height 1" higher than wheel size. Optional 4" or 6" legs available.





Model: _____ Item #: _____ Date: _____

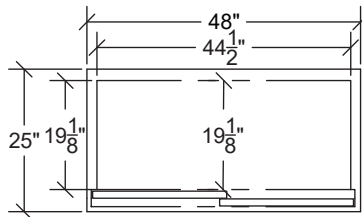
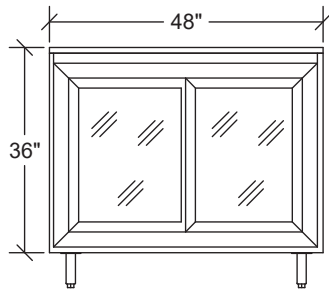
Project: _____ Qty: _____ Approved By: _____

Remote Back Bar Coolers

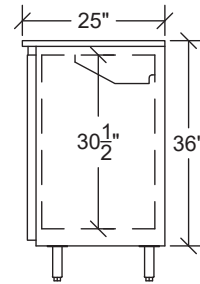
Royal Series Refrigeration

Sliding Doors

Base Model	Length	Doors	Weight
BR48	36"	2	280 lbs.

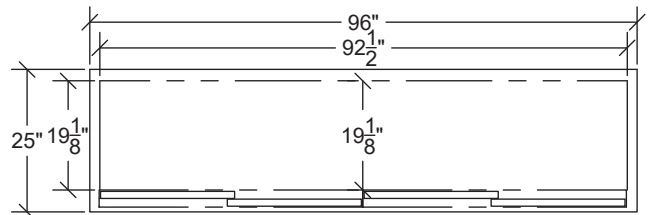
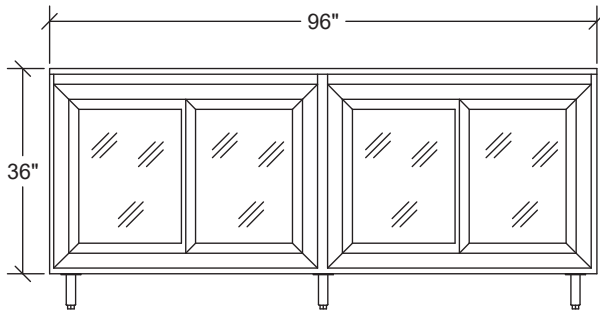


This side view applies to Sliding Door Base Models BR48 and BR96



Sliding Doors

Base Model	Length	Doors	Weight
BR96	96"	4	510 lbs.



NOTE: Optional casters raise height 1" higher than wheel size. Optional 4" or 6" legs available.

