



# BEVERAGE-AIR®

Project: _____	AIA# _____
Item: _____	
Location: _____	SIS# _____
Approved: _____	

## DUAL TEMPERATURE REFRIGERATOR/FREEZER

**MODEL:**  
HBRF72HC-1-C

HBRF72HC Solid Door Bottom Mount Reach-In  
Hydrocarbon Series

HBRF72HC BOTTOM MOUNT DUAL TEMPERATURE REFRIGERATOR/FREEZER



**3 Year Parts/Labor Warranty**  
**Additional 4 Year Compressor Warranty**

### CABINET CONSTRUCTION

- Stainless steel exterior and interior
- Full electronic control with one-touch defrost
- Dual temp refrigerator/freezer units provide two different operating temperature zones for different types of products
- Left: refrigerator double section
- Right: freezer single section
- One-piece grille allows easy removal/installation for preventative maintenance
- Anti-microbial door handles
- Door locks standard
- Self closing doors, 120° stay open feature with spring-loaded style hinges
- Snap-in magnetic door gaskets for easy cleaning and replacement
- Five (5) heavy-duty epoxy coated wire shelves per door section
- LED lighting standard
- 6" Heavy-duty casters with (2) brakes
- Certified for open food product

### OPTIONS & ACCESSORIES

- Epoxy shelves
- Shelf clips
- 3" Caster or 6" legs
- Wine temperature control
- Door swing orientation (at time of order)
- Remote option\* (see note on back page)

### REFRIGERATION SYSTEM

- Uses environmentally friendly, energy efficient R290 refrigerant, and meets all regulatory requirements for CARB, SNAP, DOE & more
- Adaptive defrost
- Epoxy coated evaporator coil
- Refrigerator maintains product temperatures between 36°F to 38°F
- Freezer maintains product temperature to -10°F



Please verify qualifying units by visiting:  
[www.energystar.gov/cfs](http://www.energystar.gov/cfs)

3779 Champion Blvd., Winston-Salem, NC 27105  
1-888-845-9800 Fax: 1-336-245-6453  
Beverage-Air.com Sales@bevair.com



# BEVERAGE-AIR®

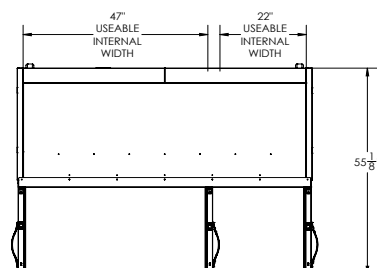
MODEL	HBRF72HC-1-C
<b>EXTERNAL DIMENSIONAL DATA</b>	
Width Overall	75 1/8"
Depth Overall (with handle)	33 7/8"
Height Overall (with casters)	84"
Number of Doors	3
Depth with Door Open 90°	55 1/8"
Door Openings (in)	21 7/8" x 52 5/8"
<b>INTERNAL DIMENSIONAL DATA</b>	
NET Capacity Refrigerator (cubic ft.)	44.85
NET Capacity Freezer (cubic ft.)	19.62
Internal Width Overall (in)	(R) 47" (F) 22"
Internal Depth Overall (in)	27"
Internal Height Usable (in)	53"
<b>ELECTRICAL DATA</b>	
Full Load Amperes Refrigerator	2.4
Full Load Amperes Freezer	7.5
<b>REFRIGERATION DATA</b>	
Horsepower* Refrigerator	1/4
Horsepower* Freezer	3/4
Capacity (BTU/Hr)* Refrigerator	1702
Capacity (BTU/Hr)* Freezer	1927
<b>SHIPPING DATA</b>	
Gross Weight - Crated	774 lbs
Height - Crated	88"
Width - Crated	77"
Depth - Crated	36"

\*NOTE: Remote units are field wired and come with 6" legs.  
Refrigerant must be specified at time of order.

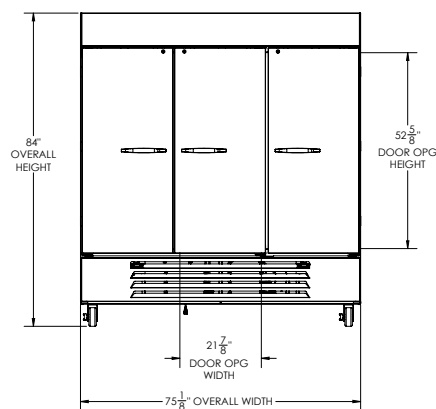
## Dual Temp Bottom Mount Reach-In Solid Door Refrigerator/Freezer Model: HBRF72HC-1-C

### Model Views

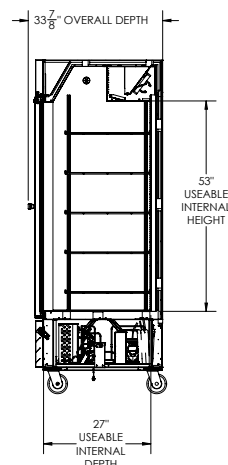
Required Clearance: Top 0", Bottom 3", Rear 3", Sides 0"



### PLAN VIEW



### ELEVATION VIEW



### SIDE VIEW

### \*ELECTRICAL CONNECTION

115/60/1

(2) NEMA 5-15P



Units pre-wired at factory and include 8' long cord and plug set.



3779 Champion Blvd., Winston-Salem, NC 27105 1-888-845-9800 Fax: 1-336-245-6453 Beverage-Air.com Sales@bevair.com

an Ali Group Company



The Spirit of Excellence