

# COOK CHILL GAS HORIZONTAL AGITATOR STATIONARY MIXER KETTLES

Project \_\_\_\_\_  
Item \_\_\_\_\_  
Quantity \_\_\_\_\_  
FCSI Section 11400 \_\_\_\_\_  
Approved \_\_\_\_\_  
Date \_\_\_\_\_

## Models

- HAMKGL60CC
- HAMKGL80CC
- HAMKGL100CC



Shown with optional Easydial Style Control with Data Logger

- Flush mounted, easily removable temperature probe
- Spring assisted two piece stainless steel cover equipped with stainless steel screen guard with interlocking safety system
- Three (3) horse power horizontal agitator drive
- Variable mixer speed control from 5 to 20 r.p.m. with agitator start/stop controls
- Spring loaded teflon blades scrape the entire heated surface area
- Internal mixing fins for efficient, uniform mixing of products
- Easily removable agitator without the use of tools
- 190 M-BTU high efficiency power burner heating system for fast heat-up and recovery times
- "Glow type" automatic safety ignition system
- Kettle steam jacket permanently filled with treated distilled water
- 50 PSI steam jacket rating and safety valve
- Front mounted combination pressure-vacuum gauge
- Hot and cold water kettle filler with swing spout
- Standard for Natural Gas operation
- Standard Electrical for agitator drive is 208V/3Ph/60Hz
- Accepted for use in USDA inspected facilities
- Gallon Markings - 10 gallon increments
- Built to CSA/NSF specifications

## Short Form Specifications

Shall be Cleveland Model HA-MKGL \_\_\_\_ CC, gas fired, \_\_\_\_ gallon operating capacity, Cook Chill, stationary horizontal agitator mixer kettle, 190M BTU High Efficiency Power Burner heating system, type 316 Stainless Steel for all food contact surfaces, 50 PSI jacket rating, Spring Assist Cover with Stainless Steel Safety Screen Guard, 3HP Motor Drive for mixer arm with variable speed control, 3" Air Operated Piston Draw-off Valve, Flush Mounted Temperature Probe, Two Piece Cover with Safety Screen, Gallon Markings.

NOTE: Specify remote or kettle mounted Cook Chill control panel.

## Standard Features

- Full 60, 80 or 100 gallon working capacity
- Type 316 stainless steel for all food contact surfaces
- Precise solid state temperature control
- Solid state low water safety controls in a plug-in module
- L.E.D. indicators for heat cycle and low water warning
- 3" diameter air operated flush mounted piston draw-off valve with variable control (requires air compressor)

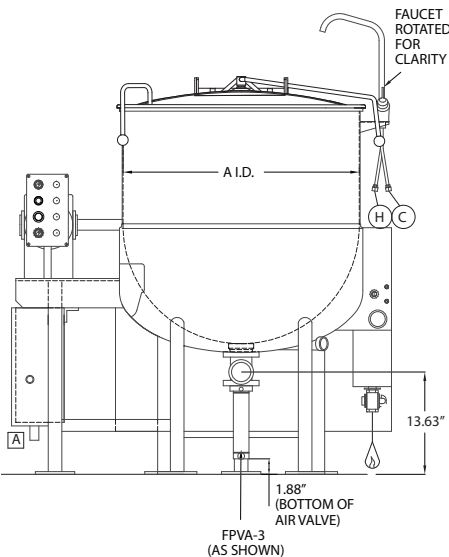
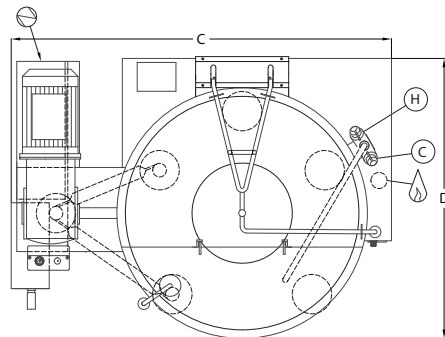
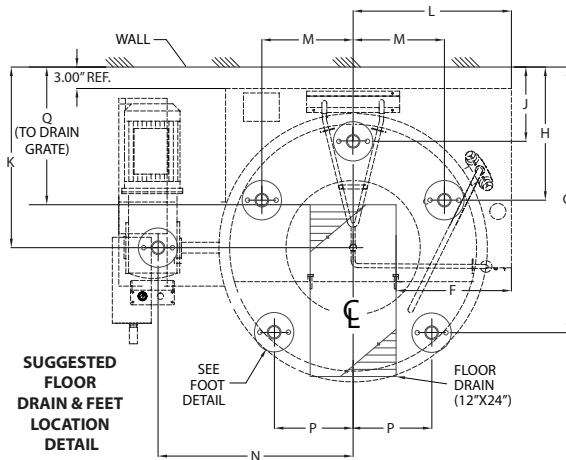
## Options & Accessories

- **Kettle Mounted Control Option**
  - GMC1/LMC1: Automatic Water Meter (Gallons or Liters – specify)
  - Easydial style Time and Temperature Controls with Data Logger and USB Port (EZ-DTCI)
- **Remote Floor Mounted Controls Option**
  - HASGCH: Single Floor Mount remote control center, includes EZD Temperature control & indicator, GMC1 automatic water meter
  - HADGCH: Dual twin Floor Mount remote control center, includes EZD Temperature control & indicator, GMC1 automatic water meter
  - HADGLC: Lockable Control Center for Prisons
- Kettle Accessory Kit (KAK) includes:
  - Clean-up Brush (CB)
  - 36" Kettle Paddle (KP)
  - 36" Kettle Whip (KW)
  - 36" Kettle Brush (KB)
  - Draw-off Brush (DB)
  - 24 oz. Ladle (KL)
- Option for propane gas operation (PG)
- Voltage option for agitator drive other than standard 208V/3Ph/60Hz
- 3" diameter, 90° Elbow
- 3" Butterfly Valve
- Heat Shield (HS001)
- Correctional Packages (CP-HAMKGL)

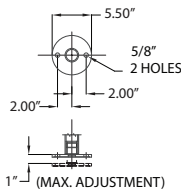
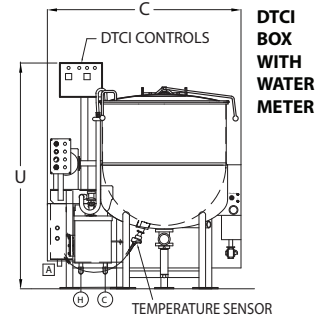
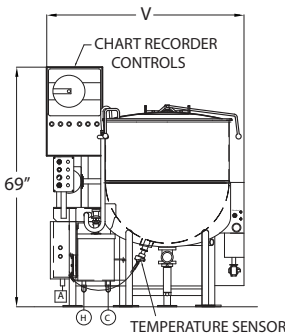
## DIMENSIONS

MODEL NO.	A	B	C	D	E	F	G	H	J	K	L	M	N	P	Q	U	V
HAMKGL60	29.50"	48.25"	50.00"	36.75"	83.00"	13.13"	34.63"	18.63"	10.38"	23.88"	19.13"	10.09"	24.00"	9.75"	17.88"	59.25"	51.50"
HAMKGL80	33.00"	51.75"	58.00"	39.00"	90.00"	14.88"	35.94"	18.63"	10.38"	24.63"	20.88"	11.53"	26.00"	9.75"	18.63"	62.75"	55.13"
HAMKGL100	35.50"	55.75"	60.50"	41.00"	96.00"	16.13"	37.13"	18.63"	10.38"	25.25"	22.13"	12.75"	27.25"	11.00"	19.25"	65.25"	57.75"

- NOTES:**
1. Manufacturer must be notified if unit will be operating above 2,000 foot altitude.
  2. Consult factory for manufactured gas.
  3. All vertical dimensions shown are minimum. Feet are adjustable to 1 inch maximum.
  4. Refer to document KE95504-11 for specific voltage, phase, wattage & other.

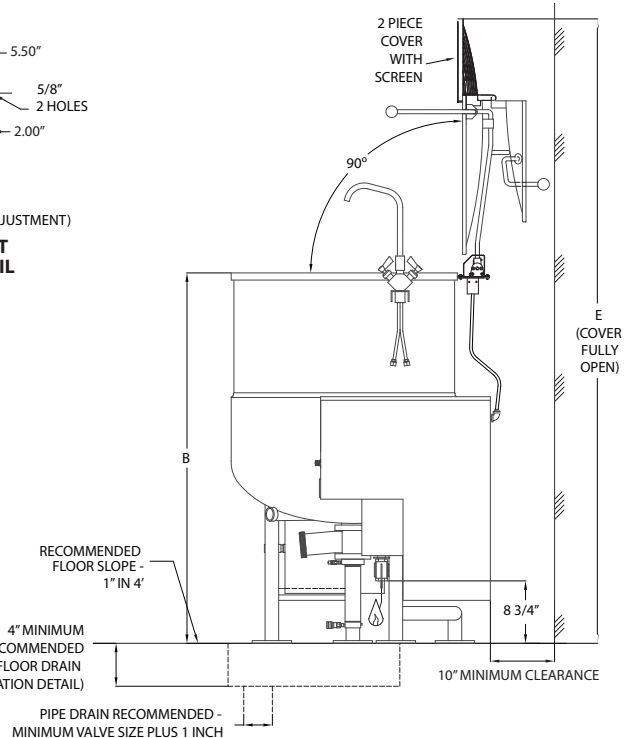


**CHART RECORDER  
BOX WITH  
WATER METER**



### LEGEND:

	ELECTRICAL SUPPLY
	GAS
	AIR
	COLD WATER
	HOT WATER



Cleveland Range reserves right of design improvement or modification, as warranted.

(NOT TO SCALE)