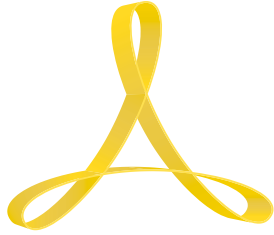


# PASTA COOKER | ROBOTIC BASKET LIFT

## MODEL APCL28/35

TATIANA



ARCOBALENO™

Project: \_\_\_\_\_  
Item #: \_\_\_\_\_  
Qty: \_\_\_\_\_  
CSI Section 11400: \_\_\_\_\_  
Approval: \_\_\_\_\_  
Date: \_\_\_\_\_



### STANDARD FEATURES

- Adjustable digital timers
- Linear basket lift actuators for accuracy and convenience
- Basket actuator push button up and down
- Locate adjacent to pasta cooker
- Factory and on-location training—the only full-service pasta machine manufacturer in North America

### OPTIONAL FEATURES & ACCESSORIES

- ☐ Pasta lift baskets



Pasta Cooker with 2 basket lifters right & left side



APCL28  
2 Lifters



APCL35  
3 Lifters

#### Pasta Basket Options



1/1

1/2

1/3

1/6

#### ■ WARRANTY

**One Year:** For more information visit [arcobalenollc.com/warranty.html](http://arcobalenollc.com/warranty.html)



#### ■ TRY BEFORE YOU BUY

In an effort to ensure success, we maintain a test kitchen where you can have your very own recipe tested for quality —at NO COST to you! Call for details.



*Specifications subject to change without notice due to policy of continuous product improvement.*



# PASTA COOKER | ROBOTIC BASKET LIFT MODEL APCL28/35

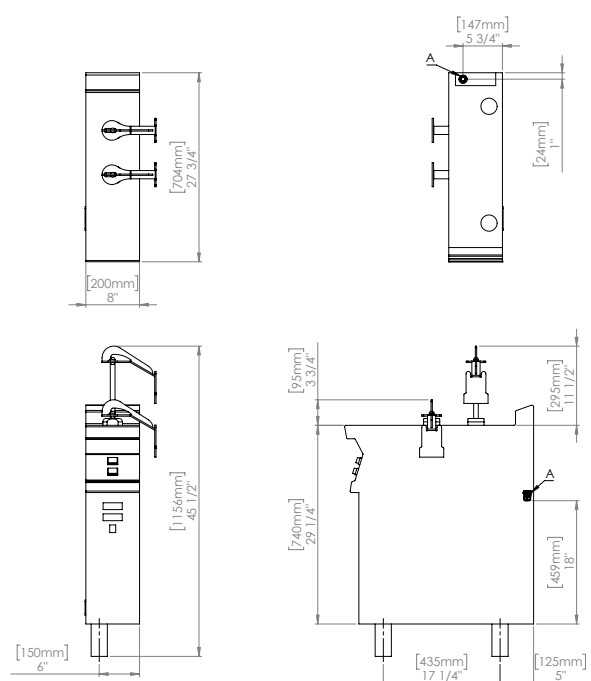
ARCOBALENO™

## TECHNICAL SPECIFICATIONS

|                       |                            |                            |
|-----------------------|----------------------------|----------------------------|
| Model                 | APCL28                     | APCL35                     |
| Power (Electric Only) | 220/3/60Hz (2 Amps @ 208V) | 220/3/60Hz (3 Amps @ 208V) |
| Machine Dimension     | 8"W x 27.75"D x 45.50"H    | 8"W x 35.25"D x 45.50"H    |
| Shipping Dimension    | 10.50"W x 32"D x 50"H      | 11"W x 39"D x 50"H         |
| Net Weight            | 145 lbs                    | 160 lbs                    |
| Shipping Weight       | 160 lbs                    | 175 lbs                    |
| Shipping Class        | 85                         | 85                         |

### APCL28

NOTES:  
A- ELECTRICAL CONNECTOR, 220V 3 PH 60Hz



### APCL35

NOTES:  
A- ELECTRICAL CONNECTOR, 220V 3 PH 60Hz

