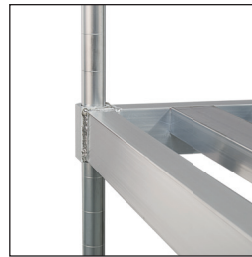


Keg Stackers – Double-Deep



51171



Keg Shelf Closeup

Built To Withstand The Impact Shock Of Dropped Kegs

These heavy duty aluminum units store $\frac{1}{6}$, $\frac{1}{4}$ and $\frac{1}{2}$ barrels (kegs) of beer as well as dry general storage. These keg shelves are extra-reinforced for the added abuse associated with handling kegs.

Unlike most wire shelves, these units have easy-to-clean flat surfaces that aid in the easy-on and easy-off of smaller heavy product.

Approved for use in freezers, displays, as well as packaging and storage areas, these heavy duty all welded aluminum racks keep product organized and off of the floor while providing adequate air flow.

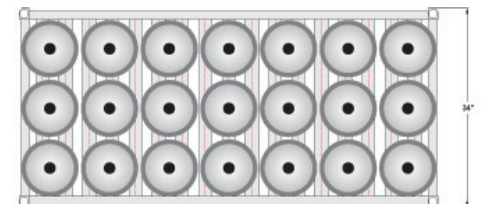
Adjustable

Fully adjustable shelves can be adjusted to fit your specific requirements. Units assemble in minutes with only an allen wrench (provided). Aluminum posts are marked in 2" increments for easy leveling with all ends capped.

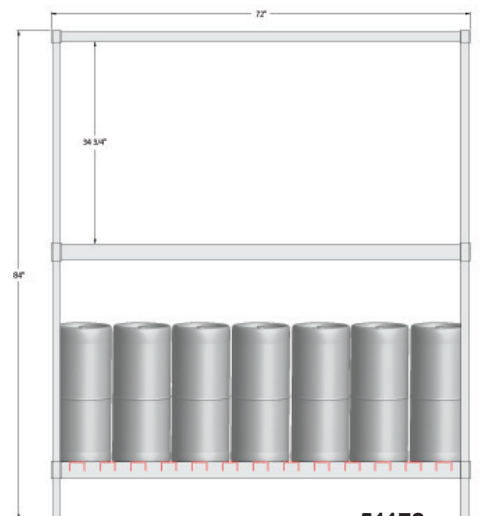
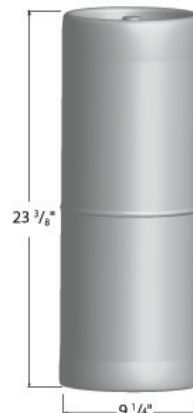
Guaranteed To Last

Guaranteed to last, each rack carries a **Lifetime Guarantee** against rust and corrosion as well as a **Five-Year Guarantee** against material defects and workmanship.

**MAXIMIZE
Your Craft Keg
STORAGE**

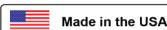


$\frac{1}{6}$ Barrel



51172

This information is for general sales and engineering use only. New Age Industrial reserves the right to modify or make changes at any time without notice to materials and specifications.



Distributed by:

Job: _____

Item: _____

Quantity: _____

Keg Stackers – Double-Deep

MATERIAL:

- Framework for the keg shelves is constructed out of 1½" x 2¾" x .070" wall tubing.
- Keg Shelf laterals are constructed out of 1½" x 2¼" x .15" wall channel.
- Shelves utilize our standard posts that are constructed out of 1½" Diameter pipe. -- Sold Separately

GUARANTEE:

- Lifetime Guarantee against rust and corrosion.
- Five-Year Guarantee against workmanship and material defects.

Model No.	Size D-H-L	½-Barrel Cap.	⅓-Barrel Cap.	No. Shelves	Ship Lbs.
-----------	------------	---------------	---------------	-------------	-----------

COMPLETE UNITS

51169	34" x 84" x 42"	8	24	3	90
51170	34" x 84" x 54"	12	30	3	103.9
51171	34" x 84" x 60"	12	36	3	117
51172	34" x 84" x 72"	16	42	3	137
51173	34" x 84" x 80"	16	48	3	214
51174	34" x 84" x 93"	20	54	3	226

KEG SHELVES ONLY

51019	34" x 3" x 42"	4	12	1	27
51020	34" x 3" x 54"	6	15	1	35
51021	34" x 3" x 60"	6	18	1	42
51022	34" x 3" x 72"	8	21	1	50
51023*	34" x 3" x 80"	8	24	1	49
51024*	34" x 3" x 93"	10	27	1	57

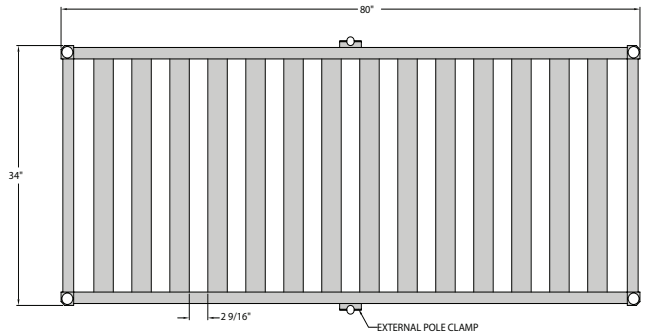
TOP SHELVES – Lite T-Bar ** Not For Kegs **

51025	34" x 2" x 42"	n/a	n/a	1	17
98951	34" x 2" x 54"	n/a	n/a	1	21.5
98953	34" x 2" x 60"	n/a	n/a	1	24
50723	34" x 2" x 72"	n/a	n/a	1	27
51026*	34" x 2" x 80"	n/a	n/a	1	31
51027*	34" x 2" x 93"	n/a	n/a	1	43

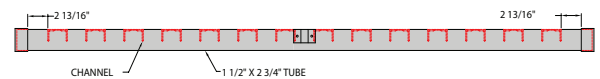
U-Brace / Wall Protectors - Not NSF Certified.

51298	34" x 2" x 42"	n/a	n/a	n/a	6
51299	34" x 2" x 54"	n/a	n/a	n/a	7
51181	34" x 2" x 60"	n/a	n/a	n/a	8.5
51300	34" x 2" x 72"	n/a	n/a	n/a	9
51280	34" x 2" x 80"	n/a	n/a	n/a	10
51182	34" x 2" x 93"	n/a	n/a	n/a	11

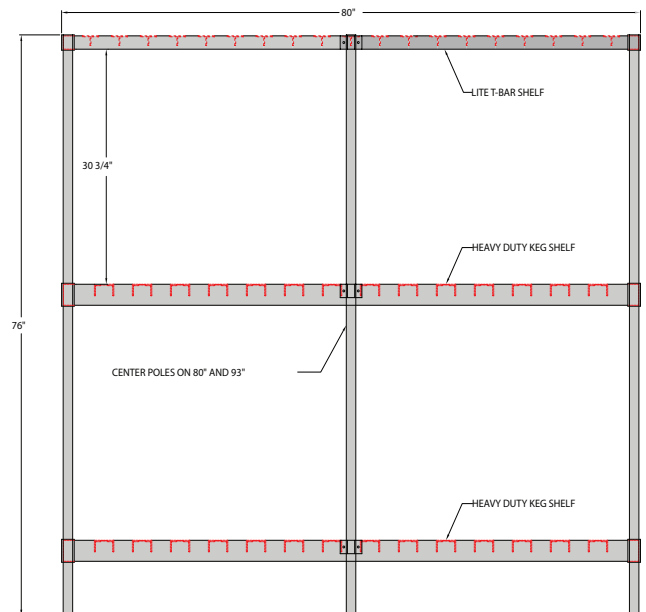
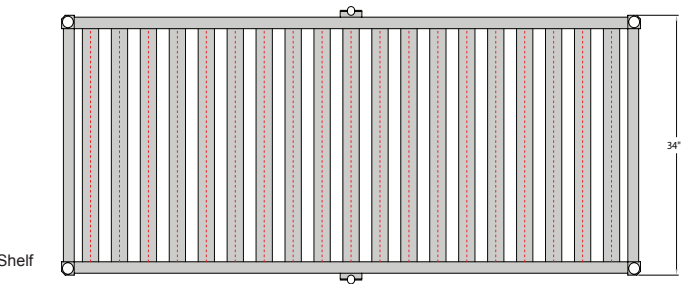
* Shelves Require Six Posts.



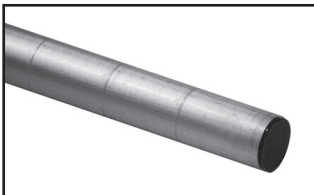
51023
Keg Shelf



51026
T-Bar Shelf



Posts



Model No.	Length	Ship Lbs.
12P	12"	.6
34P	34"	1.7
48P	48"	2.5
54P	54"	3
60P	60"	3
68P	68"	3.6
72P	72"	3.9
76P	76"	4
84P	84"	4.1

Capped aluminum pipe (1½" o.d.).
Marked in 2" increments.

This information is for general sales and engineering use only. New Age Industrial reserves the right to modify or make changes at any time without notice to materials and specifications.

