



Equipment for the Foodservice Industry

value + quality + service

## STAINLESS STEEL HAND SINKS



### STAINLESS STEEL HAND SINKS

### Features

#### Features:

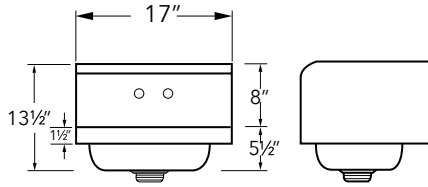
- All sink bowls have a large liberal radius
- Rectangular in design for increased capacity
- Keyhole wall mount bracket
- Stainless steel basket drain with a 1 1/2" IPS
- 8" backsplash
- 4" center faucet holes
- All TIG welded
- Welded areas are blended to a satin finish to match adjacent surfaces
- Die formed countertop edge with a No-Drip offset
- One sheet of stainless steel means no seams
- Heavy gauge Type 304 stainless steel
- Wall mounting bracket is of offset design in Type 304 stainless steel
- All fittings are brass/chrome unless otherwise indicated
- Faucet supply is 1 1/2" IPS male thread hot and cold

**STAINLESS STEEL HAND SINKS**

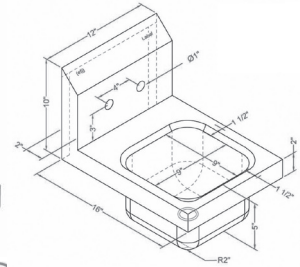
**Features**



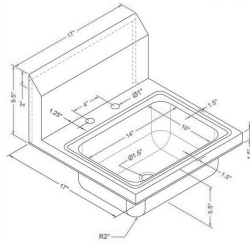
SIH817-S



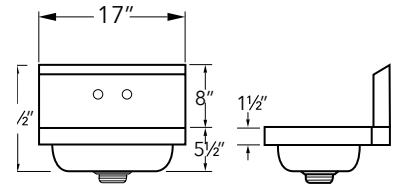
SIH813-F



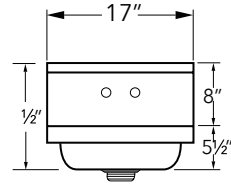
SIH817-D



SIH817-F



SIH817-W



**STAINLESS STEEL HAND SINKS**

Product #	Description	Shipping Dimensions			Weight (lbs)
		W"	D"	H"	
SIH817-D	Deck mount hand sink w/faucet	18	18	15	13
SIH813-F	Wall mount space saver hand sink w/faucet	12	16	10	12
SIH817-F	Wall mount hand sink w/faucet	18	17	14	14
SIH817-S	Wall mount hand sink w/splash guard & faucet	18	17	14	14
SIH817-W	Wall mount hand sink	18	17	14	13

**HAND SINK ACCESSORIES**

Product #	Description	Shipping Dimensions			Weight (lbs)
		W"	D"	H"	
SIH-FW	Faucet for hand sink	9	5	3	2
SIH-FV	Foot-valve for hand sink	11	6	3	3

Specifications subject to change without notice.



EFI Sales Ltd.  
Toronto Office  
515 Hanlon Blvd  
Guelph, ON N1C 0A1

EFI Sales Ltd.  
Vancouver Office  
26895 Gloucester Way  
Langley, BC V4W 3Y3

Distribution Facilities:  
Toronto, ON  
Langley, BC

(888) 565-9920 Toll Free  
(519) 822-1895 Toronto  
(604) 607-8850 Vancouver  
info@efifoodequip.com  
www.efifoodequip.com