



INDUCTION ALUMINUM

18/0 STAINLESS STEEL
BASE ALLOWS FOR
INDUCTION CAPACITY



GAS



ELECTRIC



CERAMIC



HALOGEN



INDUCTION

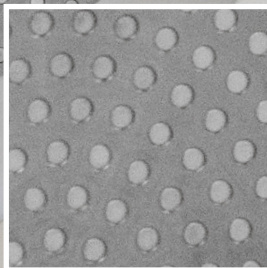


- Ergonomic removable silicone sleeve included
- Uniform thickness plus durable aluminum construction
- Features Eclipse® non-stick coating from Whitford MGF (selected models)



Three Offset Rivets For Strong Handle Attachment.

Stainless Steel Induction Capable Base



Induction Aluminum Fry Pan

Natural Finish, safe for use with all utensils. Sleeve included.

| ITEM # | DIM (WXH) |
|---------|---------------|
| 5813847 | 7" / 18 cm |
| 5813848 | 8" / 20 cm |
| 5813850 | 10" / 25.4 cm |
| 5813852 | 12" / 30.5 cm |
| 5813854 | 14" / 35.6 cm |



Induction Aluminum Fry Pan

Non-Stick Finish. Sleeve included.

| ITEM # | DIM (WXH) |
|---------|---------------|
| 5813857 | 7" / 18 cm |
| 5813858 | 8" / 20 cm |
| 5813860 | 10" / 25.4 cm |
| 5813862 | 12" / 30.5 cm |
| 5813864 | 14" / 35.6 cm |



Eclipse® 3-layer internally-reinforced non-stick coating delivers superior food release characteristics as well as scratch resistance and high durability. PFOA free.



Removable Silicone Sleeve Included

Heat resistant: 572°F / 300°C.

| ITEM # | FOR FRY PAN |
|---------|---|
| 5811133 | For 7" / 18 cm & 8" / 20 cm |
| 5811134 | For 10" / 25.4 cm, 12" / 30.5 cm, 14" / 35.6 cm |