



Project Name: _____

Location: _____

Item #: _____ Qty: _____

Model: _____

NARROW WIDTH, GLASS DOOR MERCHANDISER FREEZERS

MODEL: ☐ MXM2-36FHC ☐ MXM2-36FBHC



MXM2-36FHC



MXM2-36FBHC

Maxx Cold Narrow Width, Double Glass Door Merchandisers are ideal for compact environments offering an attractive display for last minute purchases or storage depending on the foodservice, beverage and retail application. The upright freezer cabinets are available in two door, self-closing swing doors. Smooth, powdered coated steel exterior is available in either white or black with an illuminated top to personalize your advertising message. Freezer Merchandiser units are supplied with four (4) adjustable shelves per door, lock and key set and interior LED lighting to display merchandiser contents. Electronic thermostat, digital LED temperature display and regulate accurate temperature, pro-longing and preserve shelf life of products. Not only are controls simple to use, operation is energy efficient with CFC refrigerant and foam insulation.

FEATURES AND CONSTRUCTION

- Smooth, powder coated steel exterior available in either white or black
- Low-e triple pane glass doors
- Four (4) adjustable heavy-duty PE-coated wire shelves per door
- Electronic thermostat and digital LED temperature display
- HC refrigerant R290
- CFC refrigerant and foam insulation
- Self-closing doors are provided with lock and key set for security
- Interior LED lighting
- Designed with an illuminated plastic merchandising top panel

NOMINAL STORAGE CAPACITY

MXM2-36FHC/36FBHC..... 36 Cu Ft (1019 L)

TEMPERATURE

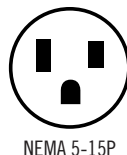
Holding temperature -4°F to 10°F (-20°C to -12°C)

- Oversized refrigeration system delivers optimum storage temperature and rapid temperature recovery



ELECTRIC

115V / 60Hz / 1Ph
6' (2m) power cord set included



NEMA 5-15P

3RD PARTY APPROVALS



Intertek

Certified to ANSI NSF 7



Intertek

Certified to ANSI UL 471

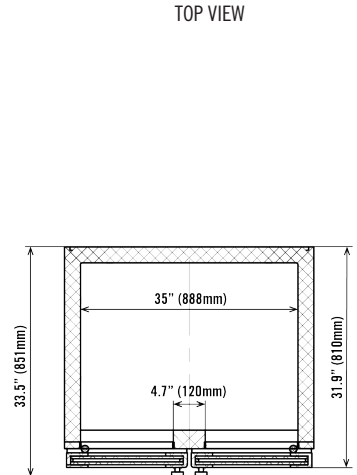
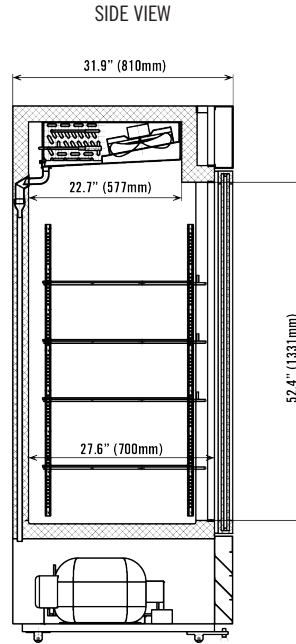
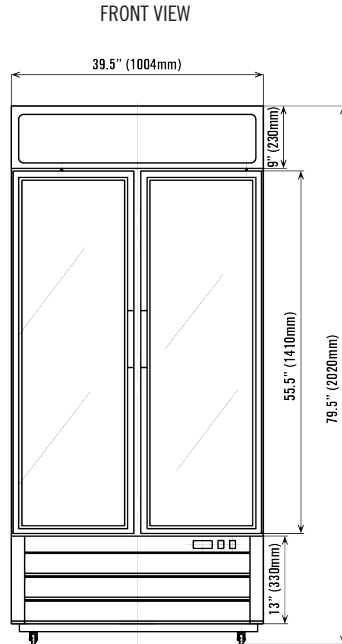


Zero Ozone Depletion Potential

MAXX COLD WARRANTY (USA / CANADA)

Contact Maxx Cold for warranty statement at
TechnicalServices@TheLegacyCompanies.com or 877.368.2797

MXM2-36FHC/36FBHC



MODEL	EXTERNAL DIMENSIONS	INTERNAL DIMENSIONS	NOMINAL CAPACITY	HOLDING TEMPERATURE RANGE	AMP DRAW	SHIPPING WEIGHT	REFRIGERANT AND CHARGE SIZE	DOORS	ELECTRICAL
MXM2-36FHC	39.5" x 33.5" x 79.5" (1119 x 851 x 2019 mm)	35" x 27.6" x 52.4" (889 x 701 x 1331 mm)	36 Cu Ft (1019 L)	-4°F to 10°F (-20°C to -12°C)	12.0A	450 lbs (205 kg)	R-290A 5.29 oz (150 g)	2 Swing	115V / 60Hz / 1Ph
MXM2-36FBHC	39.5" x 33.5" x 79.5" (1119 x 851 x 2019 mm)	35" x 27.6" x 52.4" (889 x 701 x 1331 mm)	36 Cu Ft (1019 L)	-4°F to 10°F (-20°C to -12°C)	12.0A	450 lbs (205 kg)	R-290A 5.29 oz (150 g)	2 Swing	115V / 60Hz / 1Ph

INSTALLATION

- Units are equipped with roller wheels and leveling feet.
- Door Handles are removable if unit is needed to fit through a 32" width door frame.