



Equipment for the Foodservice Industry

value + quality + service

STAINLESS STEEL DROP IN SINKS



STAINLESS STEEL DROP IN SINKS

Features

Features:

- All sink bowls have a large liberal radius
- Rectangular in design for increased capacity
- Stainless steel basket drain with a 1½" IPS
- 4" center faucet holes
- All TIG welded
- Welded areas are blended to a satin finish to match adjacent surfaces
- One sheet of stainless steel means no seams
- Heavy gauge Type 304 stainless steel
- Faucet supply is 1 1/2" IPS male thread hot and cold

DROP IN SINK ACCESSORIES

Product #	Description	Shipping Dimensions			Weight (lbs)
		W"	D"	H"	
SIH-FD	Faucet for drop in sink	9	5	3	2

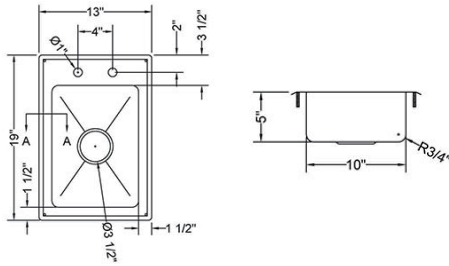


Specifications subject to change without notice.

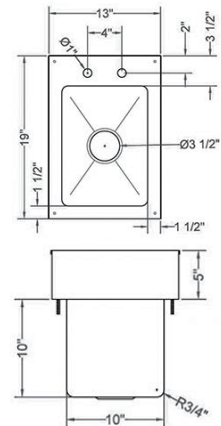


STAINLESS STEEL DROP IN SINKS**Features**

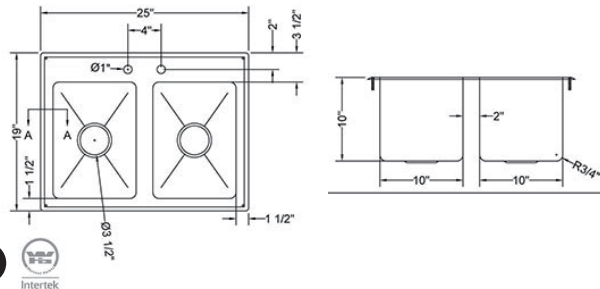
SIHD819-5



SIHD819-10



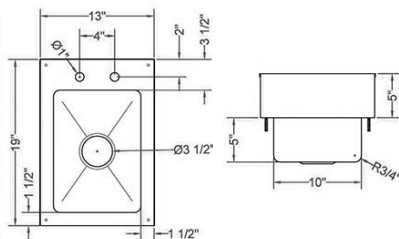
SIHD819-10-2

**STAINLESS STEEL DROP IN SINKS**

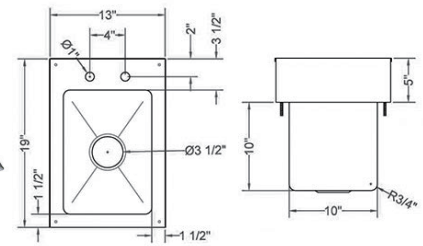
Product #	Description	Shipping Dimensions			Weight (lbs)
		W"	D"	H"	
SIHD819-5	Drop in sink 5" depth bowl	13	19	5	10
SIHD819-10	Drop in sink 10" depth bowl	13	19	10	12
SIHD819-10-2	Drop in sink with 2 fabricated bowls	25	19	10	21



SIHD819-5-S



SIHD819-10-S

**STAINLESS STEEL DROP IN SINKS with SPLASH GUARD**

Product #	Description	Shipping Dimensions			Weight (lbs)
		W"	D"	H"	
SIHD819-5-S	Drop in sink 5" depth bowl w/ splash guard	13	19	5	10
SIHD819-10-S	Drop in sink 10" depth bowl w/ splash guard	13	19	10	12