

Master Series Gas XPress Grill With Active Compression

Project _____
 Item _____
 Quantity _____
 CSI Section 11400
 Approved _____
 Date _____

Models

- XPG24AC



Model XPG24AC
Shown with low-profile grease cans



90 degree
NEMA plug

Standard Features

- Programmable control for each cooking lane precisely controls:
 - Automatic lifting and lowering of upper platen
 - Cooking gap and time
- EasyTouch™ screen design is simple and intuitive with Press and Go interface
- Advanced temperature control, smart anticipation versus on-off:
 - Eliminates temperature overshoot and undershoot
 - Increases temperature uniformity with five independently controlled heat zones - three on lower plate and two on upper platen
 - Each lane can be set to a different temperature for menu flexibility, e.g., all-day breakfast
 - Each lane can be turned off when not required - saving energy
- Recipes are programmed by setting grill temperature, platen temperature, cook time.
- Option to choose a maximum 1-inch or 2-inch cook gap:
 - 1-inch cook gap:
 - Cook food product up to 1 inch thick
 - Maximum platen opening angle is 50 degrees
 - 2-inch cook gap:
 - Cook food product up to 2 inches thick
 - Maximum platen opening angle is 42 degrees
- Allowable active compression cooking
- USB interface to update menus
- User interface provides advanced diagnostics and error logging for ease of service and increased first-time fix
- Stainless steel front, top and sides
- Towel bar with bun pan lip
- Stainless steel dual side grease collectors
- Splash guards
- Swivel casters (4) with front brakes
- Hatchless cowl for protection from water during cleaning
- IPX4 water resistant rating
- Two year limited parts and labor (USE & Canada)
- Cleaning kit with high temperature grill cleaner and cleaning tools/accessories, provided with every grill.

Optional

- Universal Tool Holder (1 or 2)
- UHC tray holder

Specifications

The XPress Grill's upper and lower grill plates cook both sides simultaneously, reducing cook times by up to 50%. Upper grill plate is automatically raised and lowered by a lift system powered by a quiet actuator.

Lower griddle plate made of 3/4" (19mm) thick carbon steel, machine ground and highly polished.

Lower grill plate heated by one electric heating element and two gas burners.

Upper platen heated by nickel plated cast aluminum electric heating elements.

Electric top heater provided with replaceable quick release Teflon sheets.

Available in three phase power for Delta or Wye electrical systems.

Voltage sensing detects brownouts and electrical input

issues. Power calibration feature adjusts power output based on electrical system voltage.

Available with CSA approvals for natural or propane gas.

Available with CE approvals for G20, G25, G25.3, G30, and G31 gas.

All have NSF approval.

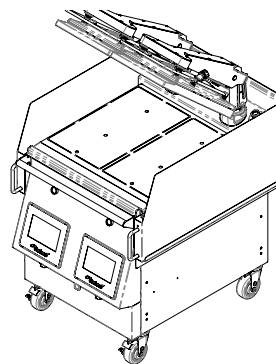
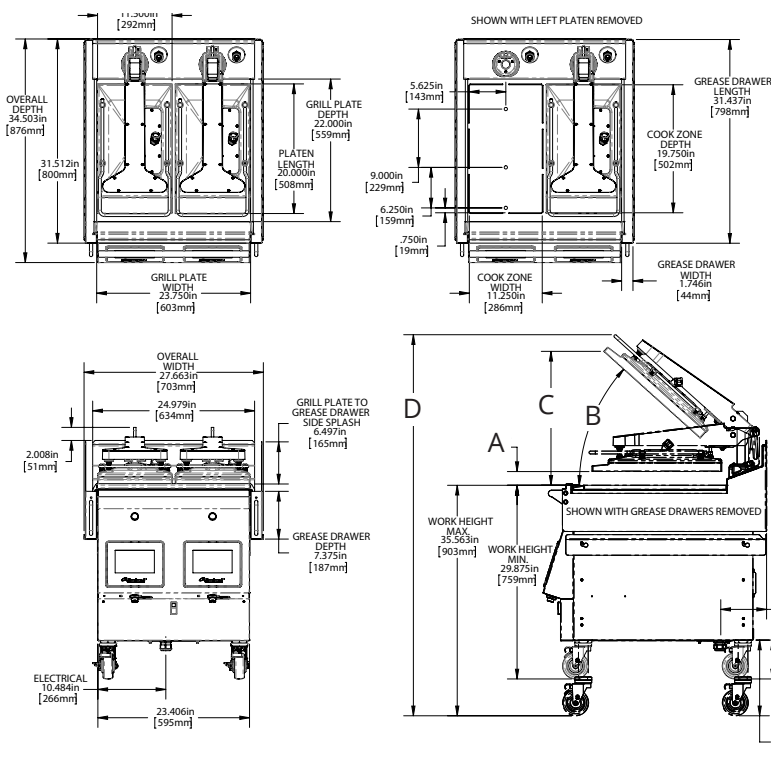
Installation with zero clearance against non-combustible surfaces.

Grill can be installed at high elevation (4,501 - 12,000 ft). Be sure to specify installation elevation when ordering.

NOTE: Grills supplied with casters and installed with flexible gas hose must be installed with an approved restraining device.



Master Series Gas XPress Grill With Active Compression



| Cook Gap | Dimension | | | |
|----------|-----------|--------|-----------|-----------|
| | A | B | C | D |
| 1-inch | 1.000 in | 50 deg | 23.009 in | 61.267 in |
| | 25 mm | | 584 mm | 1556 mm |
| 2-inch | 2.125 in | 42 deg | 20.018 in | 58.507 in |
| | 54 mm | | 508 mm | 1486 mm |

Weight

Product (grill only), 586lbs.
Packaged for shipping (accessories included), 651lbs.

Electrical Input Specification - North America, Central America, and South America

CSA Approved Models

| Model | Volts 3Ph (DELTA) 50/60 Hz | Total Current (A) | | | Power (kW) |
|---------------------|-------------------------------|-------------------|------|------|------------|
| | | L1 | L2 | L3 | |
| XPG24AC 2 Platen | 200V | 19.9 | 17.3 | 27.4 | 7.0 |
| | 208V | 19.6 | 16.9 | 26.9 | 7.1 |
| | 220V | 18.2 | 15.3 | 24.7 | 6.9 |
| | 230V | 17.5 | 14.4 | 23.6 | 6.9 |
| | 240V | 17.5 | 14.1 | 23.4 | 6.9 |

Cords - The Americas - DELTA

| Country | Factory Installed | Plug Options |
|---------|-------------------|-----------------------|
| USA | Yes | NEMA 30A. right angle |
| Canada | Yes | NEMA 30A. right angle |
| Other | No | Customer Provided |

For pin & sleeve plug, order installation kit

Gas Specifications for CSA Approved Models - The Americas

| Gas Type | Total Input | Supply Pressure | Manifold Pressure |
|-------------|-------------|-----------------|-------------------|
| | BTU | "W.C. | W.C. |
| Natural Gas | 24,000 | 7.0 | 4.0 |
| Propane | 23,000 | 11.0 | 4.0 |

Valid for units installed up to 4,500 feet (1,372 meters) above sea level.

Electrical Input Specification - Exports

CE Approved Models

| Model | Volts 3Ph (WYE) 50/60 Hz | Total Current (A) | | | Power (kW) |
|---------------------|-----------------------------|-------------------|------|------|------------|
| | | L1 | L2 | L3 | |
| XPG24AC 2 Platen | 220V/380V | 4.7 | 12.6 | 16.3 | 6.9 |
| | 230V/400V | 4.7 | 11.8 | 15.8 | 6.9 |
| | 240V/415V | 4.7 | 11.8 | 15.8 | 6.9 |

Cords - Exports - WYE

| Country | Factory Installed | Plug Options |
|---------|-------------------|----------------------|
| Various | Yes | IEC 32A Pin & Sleeve |

Gas Specifications for CE Approved Models - Exports

| Gas Type | Group | Total Input | Supply Pressure | Manifold Pressure |
|-------------------|----------|-------------|-----------------|-------------------|
| | | kW | mbar | mbar |
| G20 Natural Gas | H, E | 6.4 | 20/25 | 10.0 |
| G25 Natural Gas | L, LL, E | 6.4 | 20/25 | 13.7 |
| G25.3 Natural Gas | K | 6.4 | 20/25 | 13.7 |
| G31 Propane | P | 6.8 | 30/37/50 | 10.0 |
| G30 Butane | B | 7.0 | 30 | 8.7 |
| G30/31 LPG | B/P | 7.0 | 30/50 | 8.7 |

Garland reserves the right to make changes to the design or specifications without prior notice.

Garland Commercial Ranges Ltd.
1177 Kamato Road,
Mississauga, Ontario
L4W 1X4 CANADA

General Inquires 1-905-624-0260
USA Sales, Parts and Service 1-800-424-2411
Canadian Sales 1-888-442-7526
Canada or USA Parts/Service 1-800-427-6668

www.garland-group.com
8062A
01/25

