



BEVERAGE-AIR

Project: _____	AIA#
Item: _____	
Location: _____	SIS#
Approved: _____	

REACH-IN / PASS-THRU REFRIGERATORS

RID18HC Half Glass Door Bottom Mount
Hydrocarbon Series

MODELS:
RID18HC-HG



RID18HC-HG

3 Year Parts/Labor Warranty
Additional 4 Year Compressor Warranty

CABINET CONSTRUCTION

- Stainless steel exterior and interior
- Full electronic control
- Interior LED Light
- Three (3) shelves per section standard
- One piece grille
- Cartridge style hinges
- 120° hold open feature
- Snap-in magnetic door gasket
- Anti-Microbial door handles
- 3" heavy duty casters with two brakes standard
- Maintains temperature between 36° and 38°F

OPTIONS & ACCESSORIES

- Epoxy shelves & clips
- 6" casters or 6" leg optional
- Wire shelf dividers
- Right or left hinged door
- Remote option (see note on back page)

REFRIGERATION SYSTEM

- Refrigeration system uses R290 refrigerant to comply with all environmental concerns
- Automatic, non-electric defrost
- Epoxy coated evaporator coil

RID18HC BOTTOM MOUNT REACH-INS: PASS-THRU SERIES



3779 Champion Blvd., Winston-Salem, NC 27105
1-888-845-9800 Fax: 1-336-245-6453
Beverage-Air.com sales@bevair.com



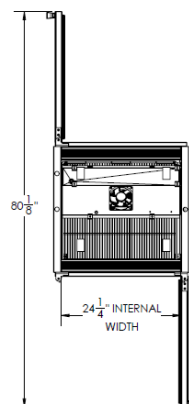
BEVERAGE-AIR

Bottom Mount Reach-In Half Glass Door Pass-Thru Models: RID18HC-HG

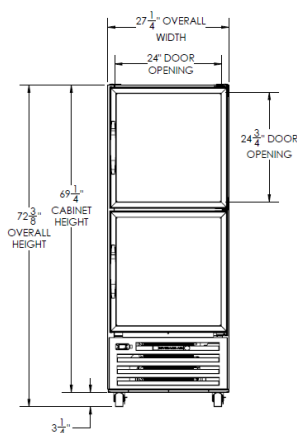
MODEL	RID18HC-HG
EXTERNAL DIMENSIONAL DATA	
Width Overall	27 1/4"
Depth Overall	32 5/8"
Height Overall with 3" Casters	72 3/8"
Number of Doors	4
Depth with Door Open 90°	80 1/8"
Door Opening (inches)	24" x 24 3/4"
INTERNAL DIMENSIONAL DATA	
NET Capacity (cubic ft.)	18.38
Internal Width Overall (in)	24 1/4"
Internal Depth Overall (in)	25 1/8"
Internal Height Overall—(in)	Max 53" Min 46 5/8"
Number of Shelves	5
ELECTRICAL DATA	
Full Load Amperes 115/60/1	5.5
REFRIGERATION DATA	
Horsepower	1/4
Capacity BTU	1997
WEIGHT DATA	
Gross Weight Lbs	422 lbs
Height - Crated	75"
Width - Crated	35"
Depth - Crated	30"

*NOTE: Remote units are field wired and come with 6" legs. Refrigerant must be specified at time of order.

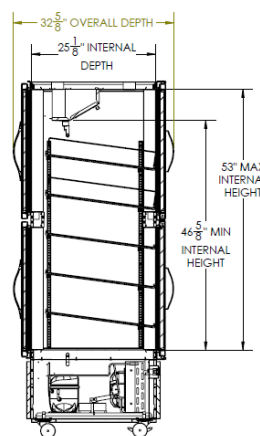
Model Views



Plan View



Elevation View



Side View

ELECTRICAL CONNECTION



115/60/1
NEMA-5-15P

Unit pre-wired at
factory and include 8'
long cord and plug set.



an Ali Group Company



The Spirit of Excellence

3779 Champion Blvd., Winston-Salem, NC 27105
1-888-845-9800 Fax: 1-336-245-6453
Beverage-Air.com sales@bevair.com