

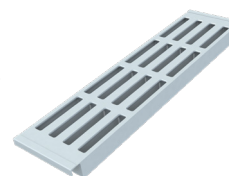
# {9.22}



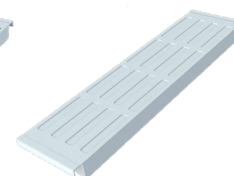
## MetroMax® 4 Polymer Shelving

All-polymer corrosion-proof shelving with removable open grid or solid shelf mat sections. Shelves and polymer posts offer a lifetime warranty against rust and corrosion. Shelf mats have built-in Microban® antimicrobial product protection. Rigid four-sided shelf frame and robust corner with complete 360° capture of the wedge and post ensure stability, strength and structural integrity. Stationary units have maximum capacity of 2,000 lbs. (907kg) evenly distributed. Mobile units (with stem casters) offer a maximum total unit load of 750lbs. (340kg). Units assemble easily — shelves mount on four one-piece wedges along grooved, numbered posts. Shelves adjust on 1" (25mm) increments.

- **Rust & Corrosion-Proof:** All-polymer construction withstands moisture, chemicals, and harsh environments.
- **Lifetime:** Polymer shelves and posts offer a Lifetime Warranty against rust and corrosion.
- **Proven Stability:** Proven Metro corner design and rigid four-sided shelf frame deliver sturdy stationary, mobile, or high-density track shelving configurations.
- **Easy-to-Clean:** 6" (152mm) wide shelf mats easily remove from the shelf for cleaning by hand or in a commercial washer / dish machine.
- **Microban® Antimicrobial Product Protection** is built into the shelf mats to inhibit the growth of bacteria, mold, mildew, and fungus that cause odors and product degradation. Microban product protection keeps the product "cleaner between cleanings".
- **Smooth, Protective Surfaces:** Smooth, flat surfaces protect packaged shelf contents from unwanted rips, tears, or damage.
- **Weight Load Capacities (Evenly Distributed)**  
Shelf up to and including 48" (1220mm) length: 800 lbs. (363kg)  
Shelf 54" (1372mm) or longer: 600 lbs. (272kg)  
Stationary Unit: 2,000 lbs. (907kg)  
Mobile Unit (with stem casters): up to 750 lbs. (340kg).  
Multiply the caster load rating by 3 to determine actual rating [not to exceed 750 lbs.(340kg)].
- **Efficient Use of Space:** Shelves adjust on 1" (25mm) increments along the post to maximize the use of available vertical space.
- **Fast, Easy Assembly:** Shelves are ready to use right out of the box. One-piece wedges securely attach to the posts – Raised beads on the back of each wedge snap into the grooves on the post. Window on wedge aligns with numbers on the post to locate the desired shelf position. Shelf seats into position over the posts and wedges. A unit can be assembled without tools in minutes.
- **Interchangeable:** Part of MetroMax platform, MetroMax 4 is compatible on the same shelving units with MetroMax i® and MetroMax Q® shelves.
- **Two shelf styles:** All MetroMax 4 shelf mats have a 3/16" (5mm) tall ship's edge built into each end to help contain supplies during mobile applications.
  - Open Grid:** Promotes air flow and light penetration.
  - Solid:** Built-in recesses help contain spills. Solid bottom shelf serves as a barrier to dirt and debris.
- **NSF Listed** for all environments.
- **Optional Accessories** are on spec sheet 9.25.



Open Grid Mat



Solid Mat



MICROBAN® and the MICROBAN® symbol are registered trademarks of the Microban® Products Company, Huntersville, NC. Microban® product protection does not by itself protect a user from food borne illness. Product must be routinely cleaned.



Supports good  
**HACCP**  
processes



All Metro Catalog Sheets are available on our website: [metro.com](https://metro.com)

# MetroMax® 4 Polymer Shelving

## Material Specifications:

- **Shelf Mats:** Polypropylene. Mats contain Microban® antimicrobial product protection.
- **Longitudinal Beams:** Pultrusions — continuous glass fibers and thermoset resin composite.
- **End Beams, Adjustable Foot and Socket, Shelf Wedge Connector:** Reinforced nylon.
- **Posts:** Pultrusions — continuous glass fibers and thermoset resin composite.
- **Post Cap:** High-density polyethylene.
- **Continuous Temperature Exposure Range** (with shelves under load): -20/120° F (-29/49° C).  
For cleaning, the maximum intermittent temperature exposure is 212° F (100° C).



## MetroMax 4 Shelves

Part number includes shelf with removable mats and one bag of wedges.

Shelf with Grid Mats Model No.	Approx. Pkd. Wt.		Shelf with Solid Mats Model No.	Approx. Pkd. Wt.		Nominal Size				Actual Size			
	(lbs.)	(kg)		(lbs.)	(kg)	Width		Length		Width		Length	
						(in.)	(mm)	(in.)	(mm)	(in.)	(mm)	(in.)	(mm)
MAX4-1824G	6.3	2.9	MAX4-1824F	6.5	3.0	18	457	24	610	18 <sup>1</sup> / <sub>2</sub>	470	23 <sup>15</sup> / <sub>16</sub>	608
MAX4-1830G	7.4	3.4	MAX4-1830F	7.7	3.5	18	457	30	762	18 <sup>1</sup> / <sub>2</sub>	470	29 <sup>15</sup> / <sub>16</sub>	760
MAX4-1836G	8.8	4.0	MAX4-1836F	9.2	4.2	18	457	36	914	18 <sup>1</sup> / <sub>2</sub>	470	35 <sup>15</sup> / <sub>16</sub>	913
MAX4-1842G	9.6	4.3	MAX4-1842F	10.0	4.5	18	457	42	1067	18 <sup>1</sup> / <sub>2</sub>	470	41 <sup>15</sup> / <sub>16</sub>	1065
MAX4-1848G	10.8	4.9	MAX4-1848F	11.3	5.1	18	457	48	1219	18 <sup>1</sup> / <sub>2</sub>	470	47 <sup>15</sup> / <sub>16</sub>	1218
MAX4-1854G	11.7	5.3	MAX4-1854F	12.3	5.6	18	457	54	1372	18 <sup>1</sup> / <sub>2</sub>	470	53 <sup>15</sup> / <sub>16</sub>	1370
MAX4-1860G	12.8	5.8	MAX4-1860F	13.5	6.1	18	457	60	1524	18 <sup>1</sup> / <sub>2</sub>	470	59 <sup>15</sup> / <sub>16</sub>	1522
MAX4-2124G	6.9	3.1	MAX4-2124F	7.2	3.2	21	530	24	610	21 <sup>1</sup> / <sub>2</sub>	546	23 <sup>15</sup> / <sub>16</sub>	608
MAX4-2130G	8.1	3.7	MAX4-2130F	8.5	3.8	21	530	30	762	21 <sup>1</sup> / <sub>2</sub>	546	29 <sup>15</sup> / <sub>16</sub>	760
MAX4-2136G	9.6	4.4	MAX4-2136F	10.1	4.6	21	530	36	914	21 <sup>1</sup> / <sub>2</sub>	546	35 <sup>15</sup> / <sub>16</sub>	913
MAX4-2142G	10.5	4.8	MAX4-2142F	11.0	5.0	21	530	42	1067	21 <sup>1</sup> / <sub>2</sub>	546	41 <sup>15</sup> / <sub>16</sub>	1065
MAX4-2148G	11.9	5.4	MAX4-2148F	12.5	5.7	21	530	48	1219	21 <sup>1</sup> / <sub>2</sub>	546	47 <sup>15</sup> / <sub>16</sub>	1218
MAX4-2154G	12.9	5.9	MAX4-2154F	13.6	6.2	21	530	54	1372	21 <sup>1</sup> / <sub>2</sub>	546	53 <sup>15</sup> / <sub>16</sub>	1370
MAX4-2160G	14.2	6.4	MAX4-2160F	15.0	6.8	21	530	60	1524	21 <sup>1</sup> / <sub>2</sub>	546	59 <sup>15</sup> / <sub>16</sub>	1522
MAX4-2424G	7.3	3.3	MAX4-2424F	7.8	3.5	24	610	24	610	24 <sup>1</sup> / <sub>2</sub>	622	23 <sup>15</sup> / <sub>16</sub>	608
MAX4-2430G	8.8	4.0	MAX4-2430F	9.3	4.2	24	610	30	762	24 <sup>1</sup> / <sub>2</sub>	622	29 <sup>15</sup> / <sub>16</sub>	760
MAX4-2436G	10.5	4.8	MAX4-2436F	11.9	5.0	24	610	36	914	24 <sup>1</sup> / <sub>2</sub>	622	35 <sup>15</sup> / <sub>16</sub>	913
MAX4-2442G	11.8	5.4	MAX4-2442F	12.3	5.6	24	610	42	1067	24 <sup>1</sup> / <sub>2</sub>	622	41 <sup>15</sup> / <sub>16</sub>	1065
MAX4-2448G	13.1	5.9	MAX4-2448F	13.9	6.3	24	610	48	1219	24 <sup>1</sup> / <sub>2</sub>	622	47 <sup>15</sup> / <sub>16</sub>	1218
MAX4-2454G	14.3	6.5	MAX4-2454F	15.4	7.0	24	610	54	1372	24 <sup>1</sup> / <sub>2</sub>	622	53 <sup>15</sup> / <sub>16</sub>	1370
MAX4-2460G	15.5	7.0	MAX4-2460F	17.0	7.7	24	610	60	1524	24 <sup>1</sup> / <sub>2</sub>	622	59 <sup>15</sup> / <sub>16</sub>	1522

**Note:** Mobile Units taller than 54" (1372mm) require four shelves or more.



x4

**Replacement  
MetroMax 4 Wedges**  
Cat. No. MAX4-9985  
Bag of four wedges

## Stationary Posts

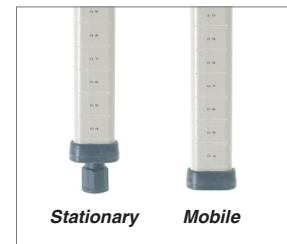
Model No.	Nominal Height (in.)	(mm)	Actual Height* (in.)	(mm)	Approx. Pkd. Wt. (lbs.)	(kg)
MX13P	13	370	14 3/16	360	0.5	0.2
MX27P	27	685	28 3/16	716	0.9	0.4
MX33P	33	875	34 3/16	868	1.0	0.5
MX54P	54	1370	54 3/16	1376	1.6	0.7
MX63P	63	1585	62 3/16	1580	1.8	0.8
MX74P	74	1890	74 3/16	1884	2.2	1.0
MX86P	86	2195	86 3/16	2189	3.0	1.4

\*Actual Height with leveling foot completely tightened. Leveling foot can be adjusted up to 1" (25mm) to compensate for uneven floors.

## Mobile Posts — for use with stem casters

Model No.	Nominal Height (in.)	(mm)	Actual Height (in.)	(mm)	Approx. Pkd. Wt. (lbs.)	(kg)
MX13UP	13	370	13 3/16	335	0.5	0.2
MX27UP	27	685	27 3/16	691	0.9	0.4
MX33UP	33	875	33 3/16	843	1.0	0.5
MX54UP	54	1370	53 3/16	1351	1.6	0.7
MX63UP	63	1585	61 3/16	1554	1.8	0.8
MX70UP	70	1778	69 3/16	1757	2.0	0.9
MX74UP	74	1890	73 3/16	1859	2.2	1.0
MX86UP	86	2195	85 3/16	2164	3.0	1.4

Consult spec sheet 9.25 for stem casters.



**Note:** For special height cut posts, consult your Metro representative.