

## 20gal. Huskee™ Receptacle

**Detailed Description:** #2000 20 gallon round receptacle

**Material:** Linear Low Density Polyethylene

**Classifications:** OSHA, FDA, USDA, & NSF

**Optional Accessories:** Optional #2001 Huskee Round Lid, #3255 Round Dolly, #3155 Maid Caddy, #3175 Caddy Bag

**Capacity:** 20 gal. (US)

**Available Colors:** Blue, Grey, White, Recycle

**Pack Quantity:** 6 Each / Pack

**Shipping Weight:** 38.75 lbs.

**Pack Cube:** 13.06 ft.

**Modular Quantity:** 4 Packs / Mod

**TI x HI:** 4 x 1

### Which Huskee receptacles are NSF: Standard 21 rated?

All bases and lids, except 55 gallon, BackSaver & SuperKan.

### Which Huskee receptacles are NSF: Standard 2 rated?

Grey and white bases & lids, except 55 gallon, BackSaver & SuperKan.

### Which Huskee receptacles are FDA and USDA approved?

All our Huskee receptacles, from 10 to 55 gallon (except SuperKan), are made of FDA compliant material. USDA requirements for material approval are satisfied by a certification of FDA compliance.

### What temperature range can a Huskee withstand?

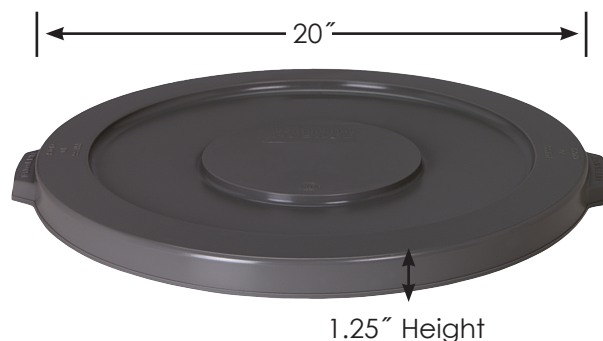
0 - 190° F for NSF rated items, 0 - 205° F for all other Huskee receptacles.

### What material are Huskee receptacles made of? LLDPE

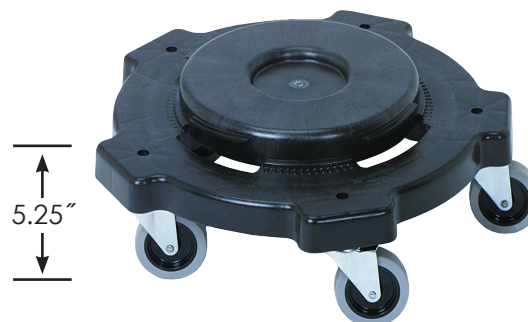
**Can you store wine in a Huskee?** We recommend against using a Huskee, or other plastic waste receptacles, for wine storage. During the fermenting process, the taste of plastic can pass into the wine.



### Optional #2001 Huskee Lid



### Optional #3255 Huskee Dolly



**CONTINENTAL**  
COMMERCIAL PRODUCTS®

© 2018, CCP | ccpmfg.com | 800.325.1051

Made in the  
**USA**