

Perlick® DRIP PANS TOP MOUNTED, ANGLED, RECESSED, CUTOUT AND SPACESAVER



| | |
|-----------|--|
| JOB | |
| AREA | |
| ITEM NO. | |
| MODEL NO. | |

| MODELS |
|-------------|
| Top-Mounted |
| Angled |
| Recessed |
| Cutout |
| Spacesaver |

Features

- Variety of sizes, and configurations to fit any installation
- Available in stainless steel or tarnish-free brass
- Removable, glass rack

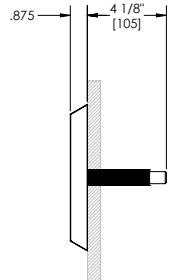
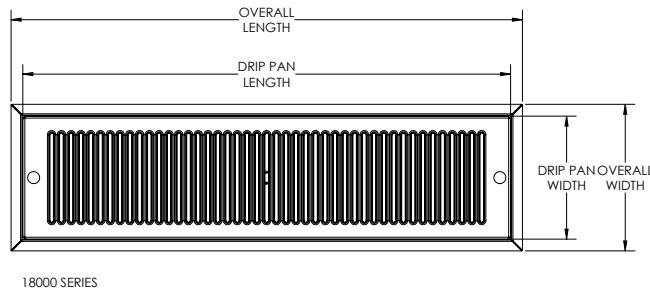
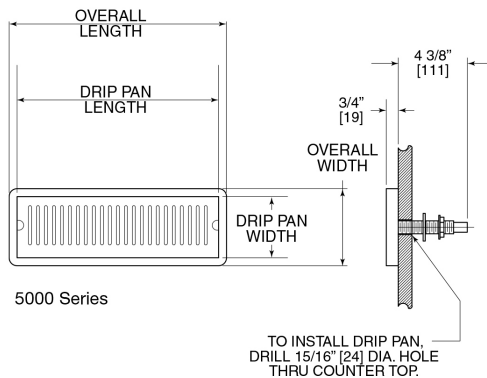


COMPONENT
NSF / ANSI 169

TOP MOUNTED

| 5000 SERIES MODEL NUMBERS | Stainless Steel | 5015 | 5020 | 5025 | 5028 | 5030 | 5034 | 5036 | 5124 | 5130 | |
|------------------------------|--------------------|--|---------------|--------------|--------------|---------------|-----------------|----------------|-----------------|----------------|--|
| | Tarnish-Free Brass | 5015TF | 5020TF | 5025TF | 5028TF | 5030TF | N/A | N/A | N/A | N/A | |
| OVERALL LENGTH (mm) | | 5-3/8" (137) | 13-3/4" (349) | 19" (483) | 24" (610) | 37" (940) | 47-1/16" (1195) | 59-7/8" (1521) | 40-1/16" (1017) | 48-5/8" (1235) | |
| DRIP PAN LENGTH (mm) | | 4-3/8" (111) | 12-3/4" (324) | 18" (457) | 23" (584) | 36-1/8" (918) | 46-3/16" (1173) | 59" (1499) | 39-3/16" (995) | 47-3/4" (1213) | |
| OVERALL WIDTH (mm) | | 5-3/8" (137) | 4-7/8" (124) | 4-7/8" (124) | 4-7/8" (124) | 4-7/8" (124) | 4-15/16" (125) | 4-15/16" (125) | 7-7/16" (189) | 7-7/16" (189) | |
| DRIP PAN WIDTH (mm) | | 4-3/8" (111) | 3-7/8" (98) | 3-7/8" (98) | 3-7/8" (98) | 3-7/8" (98) | 4-1/16" (103) | 4-1/16" (103) | 6-9/16" (166) | 6-9/16" (166) | |
| DRIP PAN and GLASS RACK | | Stainless steel or tarnish-free brass | | | | | Stainless steel | | | | |
| PLUMBING | | Equipped with 9/16" I.D. waste drain and universal drain tubes. Use with 1/2" N.P.T. pipe fittings or 1390D 1/2" I.D. flexible drain tube. | | | | | | | | | |

| 18000 SERIES MODEL NUMBERS | Stainless Steel | C18635A | C18640A | C18645A | C18650A | C18655 | C18660 | C18663 | C18665 | |
|-------------------------------|--------------------|--|----------------|----------------|---------------|---------------|-----------------|-----------------|----------------|--|
| | Tarnish-Free Brass | C18635ATF | C18640ATF | C18645ATF | C18650ATF | C18655TF | N/A | N/A | N/A | |
| OVERALL LENGTH (mm) | | 8-3/4" (222) | 14-3/16" (360) | 20-3/4" (527) | 26-3/4" (679) | 33" (838) | 46-9/16" (1182) | 52-7/16" (1332) | 59-3/4" (1517) | |
| DRIP PAN LENGTH (mm) | | 7-7/16" (179) | 12-7/8" (327) | 19-7/16" (494) | 25-1/2" (648) | 31-3/4" (787) | 45-5/16" (1151) | 51-3/16" (1300) | 58-1/2" (1486) | |
| OVERALL WIDTH (mm) | | 7-3/4" (197) | 7-3/4" (197) | 7-3/4" (197) | 7-3/4" (197) | 7-3/4" (197) | 7-3/4" (197) | 7-3/4" (197) | 7-3/4" (197) | |
| DRIP PAN WIDTH (mm) | | 6-1/2" (165) | 6-1/2" (165) | 6-1/2" (165) | 6-1/2" (165) | 6-1/2" (165) | 6-1/2" (165) | 6-1/2" (165) | 6-1/2" (165) | |
| DRIP PAN and GLASS RACK | | Stainless steel or tarnish-free brass | | | | | | Stainless steel | | |
| PLUMBING | | Equipped with 1/2" I.D. brass drain tube with 1/2" NPSM thread and machined end to accept 1/2" I.D. flexible drain tube. | | | | | | | | |



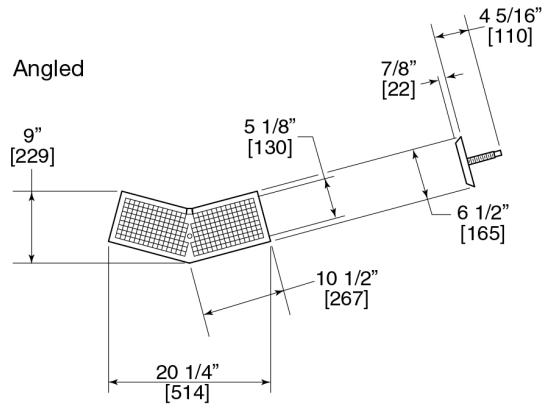
Form No. Z2356
Rev. 01.24.2020



DRIP PANS

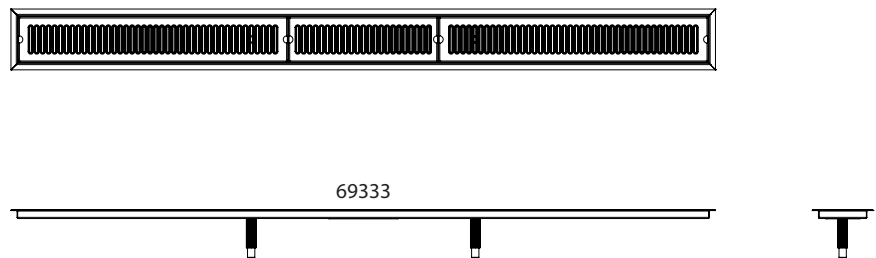
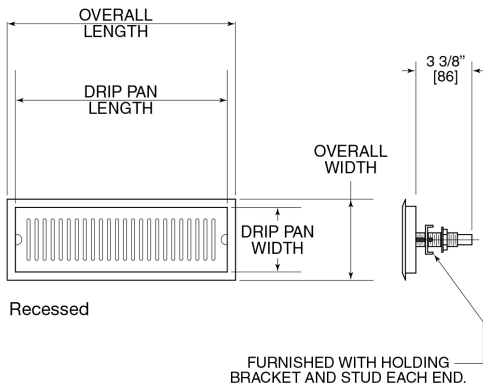
TOP MOUNTED, ANGLED, RECESSED, CUTOUT AND SPACESAVER

| ANGLED SERIES MODEL NUMBERS | Stainless Steel | 57120 |
|--------------------------------|--|---------|
| | Tarnish-Free Brass | 57120TF |
| OVERALL LENGTH (mm) | 20-1/4" (511) | |
| OVERALL WIDTH (mm) | 9" (229) | |
| DRIP PAN and GLASS RACK | Stainless steel or tarnish-free brass. Stainless steel glass rack. | |
| PLUMBING | Equipped with 1/2" I.D. brass drain tube with 1/2" NPSM thread and machined end to accept 1/2" I.D. flexible drain tube. | |



RECESSED

| MODEL NUMBERS | Stainless Steel | C11988A | C21379A | C32257 | C32357A | 58979 | 69324 | 69327 | 69330 | 69333 |
|-------------------------|--|----------------|----------------|----------------|----------------|------------------|------------------|------------------|-------------------|-------|
| | Tarnish-Free Brass | C11988ATF | C21379ATF | C32257TF | C32357ATF | 58979TF | | | | |
| OVERALL LENGTH (mm) | 8-5/8" (219) | 14-1/16" (357) | 20-5/8" (524) | 19-1/4" (488) | 37-5/16" (948) | 46-1/2" (1,181) | 59-5/8" (1,514) | 47-5/16" (1,202) | 60-1/8" (1,527) | |
| DRIP PAN LENGTH (mm) | 7-7/16" (179) | 12-7/8" (327) | 19-7/16" (494) | 19-7/16" (494) | 36-1/8" (918) | 45-5/16" (1,151) | 58-7/16" (1,459) | 46-1/8" (1,172) | 58-15/16" (1,497) | |
| OVERALL WIDTH (mm) | 7-5/8" (194) | 7-5/8" (194) | 7-5/8" (194) | 5-1/8" (130) | 5-1/8" (130) | 7-3/4" (197) | 7-3/4" (197) | 5-3/16" (132) | 5-3/16" (132) | |
| DRIP PAN WIDTH (mm) | 6-7/16" (164) | 6-7/16" (164) | 6-7/16" (164) | 4" (102) | 3-7/8" (98) | 6-9/16" (167) | 6-9/16" (167) | 4" (102) | 4" (102) | |
| DRIP PAN and GLASS RACK | No. 4 finish, type 302 stainless steel or tarnish-free brass. | | | | | | | | | |
| PLUMBING | Equipped with 1/2" I.D. brass drain tube with 1/2" NPSM thread and machined end to accept 1/2" I.D. flexible drain tube. | | | | | | | | | |

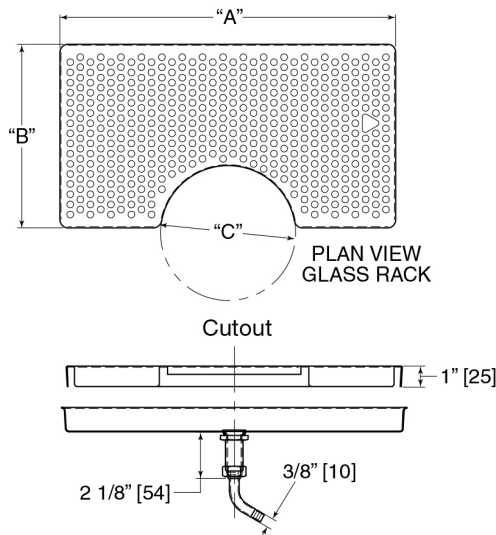




DRIP PANS
TOP MOUNTED, ANGLED, RECESSED, CUTOUT AND SPACESAVER

CUTOUT

| MODEL NUMBERS | Stainless Steel | 62303SS | | |
|-------------------------|---|---------------|----------------|----------------|
| | Tarnish-Free Brass | 62302 | 62303 | 62304 |
| DIMENSIONS "A" (mm) | | 8-5/8" (219) | 14-1/16" (357) | 20-3/4" (527) |
| DIMENSIONS "B" (mm) | | 7-7/16" (179) | 12-7/8" (327) | 19-7/16" (494) |
| DIMENSIONS "C" (mm) | | 7-5/8" (194) | 7-5/8" (194) | 5-1/8" (130) |
| DRIP PAN and GLASS RACK | Brass or stainless steel. Stainless steel glass rack. | | | |
| PLUMBING | Chrome plated brass drain and 3/8" elbow hose coupling. | | | |



SPACESAVER DRIP PANS

| MODEL NUMBERS | Stainless Steel | 3713-1 | 3721-1 |
|-------------------------|--|---------------|---------------|
| LENGTH (mm) | | 12-7/8" (327) | 21-1/8" (537) |
| DEPTH (mm) | | 8-7/8" (225) | 8-7/8" (225) |
| HEIGHT (mm) | | 14-3/4" (325) | 14-3/4" (375) |
| DRIP PAN and GLASS RACK | Stainless steel. | | |
| PLUMBING | Equipped with 1/2" I.D. brass drain tube with 1/2" NPSM thread and machined end to accept 1/2" I.D. flexible drain tube. | | |

