



Item No. _____

Project _____

Quantity _____

LEGEND™ Heavy Duty Gas Pasta Cooker

CPG Series



Model CPG-1 Pasta Cooker shown with optional round baskets

SHORT/BID SPECIFICATION

Pasta Cooker shall be a Montague **Legend** Heavy-Duty Pasta Cooker Model:

- CPG-1** [Specify single chamber: 15-7/8" (432mm) gas-fired unit with individual 60,000 BTU/hr 'U' burners, w/ perforated stainless steel flue cap; 1 full sized pasta basket with removable handle; front starch skimmer; stainless steel front and sides with 4" (102mm) legs; plus all the features listed and options/accessories checked
- CPG-2** [Specify double chamber: 31-1/2" (813mm)]...gas-fired unit with (2) individual 60,000 BTU/hr 'U' burners, w/ perforated stainless steel flue cap; 2 full sized pasta baskets with removable handles; front starch skimmer; stainless steel front and sides with 4" (102mm) legs; plus all the features listed and options/accessories checked

PASTA COOKER FEATURES:

- Single or double chamber gas pasta cooker
- Designed and engineered to cook pasta
- Perforated stainless steel flue cap
- Construction is 304/316 stainless steel
- Corrosion proof - triple fiberglass mylar insulation

BURNERS & CONTROLS:

- One 60,000 BTU/hr high efficiency burner or (2) for double chamber
- Standing pilot for automatic ignition
- Safety pilot valve

STANDARD CONSTRUCTION FEATURES:

MODEL GUIDE				
✓	Model No.	Overall Width	Zones	Capacity in Gallons/Liters
	CPG-1	15-7/8" (432mm)	2	12 gallons / 45.4 Liters
	CPG-2	31-1/2" (813mm)	3	24 gallons / 90.8 Liters

- Satin finish stainless steel front and sides
- Other surfaces painted black with electrolytic zinc undercoating
- 6" (152mm) stainless steel height-adjustable feet
- 3/4" NPT rear gas manifold connection
- 1/2" NPT cold water connection
- 1-1/4" NPT drain, (2) for CPG-2

AGENCY APPROVALS:

- NSF Listed
- ETL
- CE Approved • EN 203-1



HDS-51 [Rev. 2/17]

LEGEND™ Heavy Duty Gas Pasta Cooker

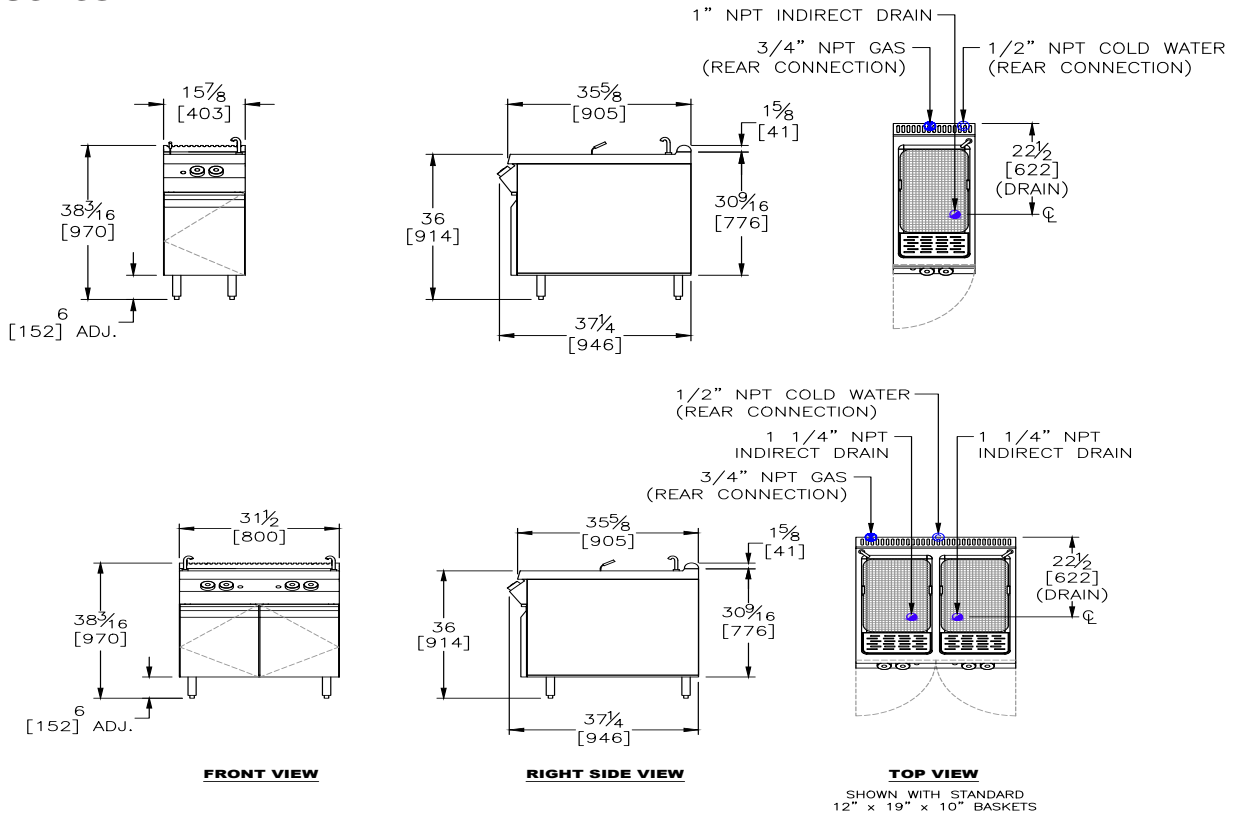
CPG Series

Dimensions in brackets are millimeters

Item No. _____

Project _____

Quantity _____



OPTIONS GUIDE:

Baskets:

- 3- 1/3 rectangle - Heavy duty stainless steel pasta cooker baskets
- 2- 1/2 rectangle - Heavy duty stainless steel pasta cooker baskets

- 6- round - Heavy duty stainless steel pasta cooker baskets

International Approvals:

- CE - Conformance Europeenne - EN203-1
Includes flame failure valve option
- Canadian Approval

INSTALLATION REQUIREMENTS & SHIPPING INFORMATION

- Pasta Cookers must be installed in accordance with local codes or in their absence with the National Fuel Gas Code: ANSI Z223.1; CAN/CGA-B149.1 Natural Gas and Propane Installation Code as applicable. Compliance with codes is the responsibility of the Owner and Installer.
- An adequate ventilation system is required. Refer to National Fire Protection Association No. 96, Standard for Ventilation Control and Fire Protection of Commercial Cooking Operations.
- This appliance is intended for commercial use by professionally trained personnel. NOT intended for Residential Use.
- Specify installation elevation: _____ if above 2000 feet (610m).
- GAS INLET SIZE (All Models): 3/4" NPT right-rear gas inlet. 3/4" NPT gas pressure regulator is provided and must be installed (by others) when unit is connected to gas supply.

Minimum Clearances	Combustible Construction	Noncombustible Construction
From Back Wall	3" (76mm)	0"
Left & Right Side	2" (51mm)	0"
For installation on combustible floors with 24" (610mm) high stand.		
For installation on non-combustible counter with 4" (102mm) high legs.		
Shipping Weight	Shipping Class	Cube (Crated) ft ³ /m ³
CPG-1	290 lbs (132 kg)	85
CPG-2	402 lbs (182 kg)	85
Entry clearance 24" (610mm) crated.		

Specify Type of Gas:		<input type="checkbox"/> Natural	<input type="checkbox"/> Propane
Manifold Pressure:		4.5" WC	10.0" WC
Models:	Burners	BTU/hr* (kW)	BTU/hr* (kW)
CPG-1	2	60,000 (17.5)	60,000 (17.5)
CPG-2	3	120,000 (35.2)	90,000 (26.4)

*Add 10,000 BTU/hr (2.9 kWh) for each optional 25,000 BTU/hr star burner.

Due to continuous product improvements, specifications are subject to change without notice.



THE MONTAGUE COMPANY
 1830 Stearman Avenue, Hayward, CA 94545
 800 345-1830 • Fax: 510 785-3342
www.montaguecompany.com

