



DIRECT STEAM TWIN CONSOLE TILTING KETTLE



SPECIFICATIONS:

Shall be a Crown model _____, direct steam connected, 2/3 jacketed, twin console kettle. A double wall kettle interior shall form a steam jacket around the lower 2/3 of the kettle. The bottom of the kettle shall be of hemispherical design for superior heat circulation. The kettle liner shall be standard with type 316 stainless steel for high acid content cooking.

Each supporting console shall have two legs for bolting unit to the floor and will conceal the steam and optional quick chill plumbing. The tilt mechanism shall permit the kettle to tilt forward part 90° for complete emptying and be self-locking for positive stop action. Construction shall be all welded #4 finish, stainless steel, type 304. A steam control valve shall be provided and mounted in the right console.

MODEL	CAPACITY	
DLT-20TC	20 Gallon	76 Liter
DLT-30TC	30 Gallon	114 Liter
DLT-40TC	40 Gallon	151 Liter
DLT-60TC	60 Gallon	227 Liter
DLT-80TC	80 Gallon	303 Liter
DLT-100TC	100 Gallon	379 Liter

OPERATION SHALL BE BY:

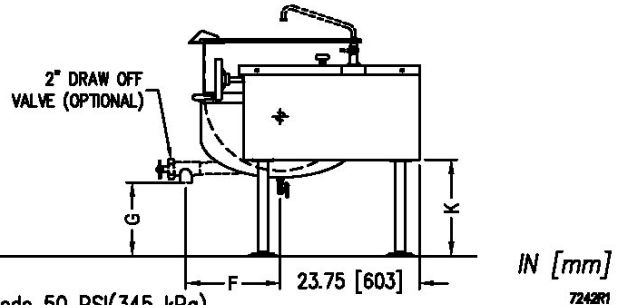
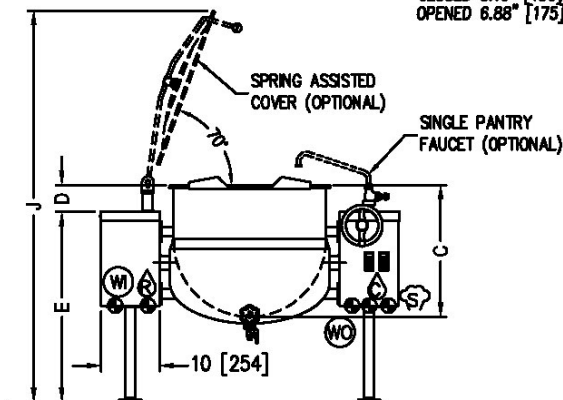
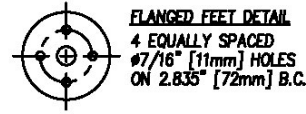
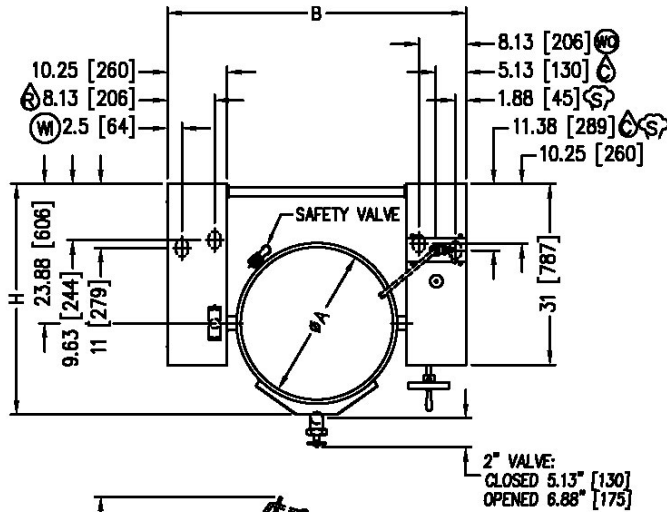
Direct steam at a minimum of 5 PSI (34kPa) and a maximum of 35 PSI (241kPa).

OPTIONAL ITEMS AT EXTRA COST:

- ☐ 50 psi (345 kPa) high pressure operation for higher cooking temperature (HP-50)
- ☐ 2" (50 mm) draw-off valve (TVT-2)
- ☐ 3" (76 mm) draw-off valve (TVT-3)
- ☐ Spring assist hinged stainless steel cover (CH-)
- ☐ Etched gallon markings (GM-)
- ☐ Etched liter markings (LM-)
- ☐ Correctional package
- ☐ Quick chill system (QCS-1)
- ☐ Triple basket assembly (TBA-)
- ☐ Solid disc strainer for draw-off valve (TSS-)
- ☐ Perforated strainer for draw-off valve (TPS-)
- ☐ Steam trap assembly consisting of steam trap, line strainer and check valve (STA-2)
- ☐ Lift off kettle cover (C-)
- ☐ Strainer hook (SH-)
- ☐ Contoured measuring strip (CMS-)
- ☐ Pour lip strainer (TKS-)
- ☐ Pressure reducing valve (PRV-2)
- ☐ Pan Carrier (PC-4)
- ☐ Draw-off valve hose kit with 8' hose (DVHK-)
- ☐ Single pantry kettle filler (SP-KF)
- ☐ Double pantry kettle filler (DP-KF)
- ☐ Single pantry faucet with swing spout (SF-18)
- ☐ Double pantry faucet with swing spout (DF-18)
- ☐ Kettle heat shield (KHS-)



QUICK CHILLED MODEL



* Pressure reducing valve is required if incoming pressure exceeds 50 PSI(345 kPa).

DIMENSIONS

MODEL	CAPACITY	UNITS	A	B	C	D	E	F	G	H	J	K
DLT-20TC	20 gallons (76 liters)	in (mm)	21" (533)	46" (1168)	18" (460)	2.75" (70)	32.5" (82.6)	14.25" (362)	15.39" (390)	36.88" (937)	60.38" (1533)	16.5" (419)
DLT-30TC	30 gallons (114 liters)	in (mm)	24" (610)	49" (1245)	20" (508)	3.25" (82)	32.5" (826)	15.38" (391)	13.88" (352)	38.63" (981)	63.5" (1613)	16.5" (419)
DLT-40TC	40 gallons (152 liters)	in (mm)	26" (660)	51.13" (1298)	22.5" (570)	4.63" (117)	32.5" (826)	16.13" (410)	12.5" (318)	39.5" (1003)	66.88" (1699)	16.5" (419)
DLT-60TC	60 gallons (227 liters)	in (mm)	29.5" (750)	54.38" (1381)	26" (660)	6.63" (168)	35.5" (902)	17.63" (448)	14" (356)	41.13" (1045)	75" (1905)	19.5" (495)
DLT-80TC	80 gallons (303 liters)	in (mm)	33" (840)	57.88" (1470)	28" (711)	6.75" (171)	38.25" (972)	19.38" (492)	14.88" (378)	43.25" (1099)	81" (2057)	22.25" (565)
DLT-100TC	100 gallons (379 liters)	in (mm)	35.5" (902)	60.25" (1530)	30" (762)	6.63" (168)	40.5" (1092)	20.12" (511)	15" (381)	44.63" (1133)	85.38" (2169)	24.5" (622)

SERVICE CONNECTIONS

- STEAM SUPPLY: 3/4" IPS (19 mm)
- CONDENSATE RETURN: 1/2" IPS (13 mm)
- COLD WATER: 3/8" IPS (10 mm) O.D. tubing to faucet (optional)
- COLD WATER IN: 1/2" IPS (13 mm) for quick chilled system
- COLD WATER OUT: 1/2" IPS (13 mm) for quick chilled system

**INTENDED FOR COMMERCIAL USE ONLY.
NOT FOR HOUSEHOLD USE.**



70 Oakdale Road, Toronto ON, Canada M3N 1V9
(919) 762-1000 www.crownsteamgroup.com