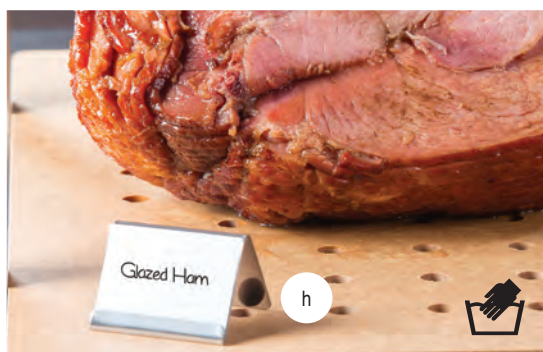
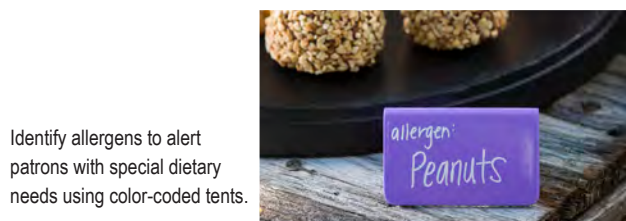


# FOLLOW THE Signs

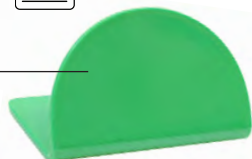
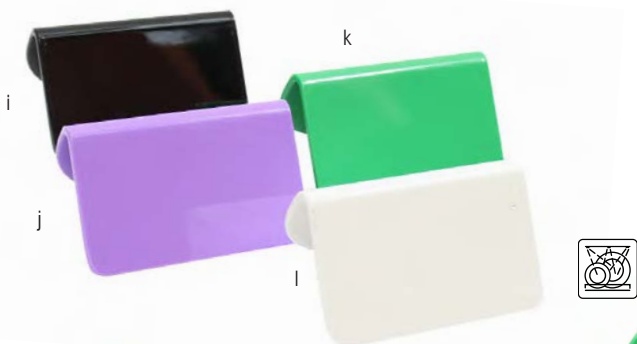
Make seating, serving and buffet identification simple with our wide variety of number signs, tents and card holders. We offer a variety to complement any style or décor.



B17 design includes lip to hold customized cards (cards not included)



Identify allergens to alert patrons with special dietary needs using color-coded tents.



For use with our chalkboard (CBP2WH) or dry erase pens.

## NUMBER SIGNS

- Numbers printed on both sides



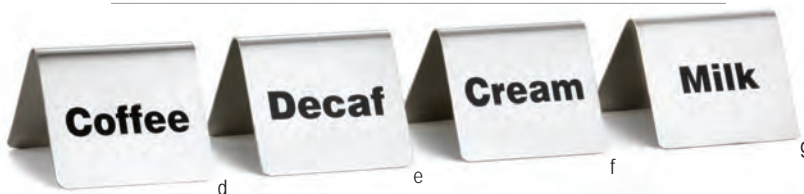
| Item #                     | Description                      | Min Order/<br>Case Pack |
|----------------------------|----------------------------------|-------------------------|
| STAINLESS STEEL OR PLASTIC |                                  |                         |
| a. N150                    | 4" Numbers 1-50, Stainless Steel | 1 set / 4 sets          |
| TN100                      | 4" Numbers 1-100, Plastic        | 1 set / 50 sets         |

## NUMBER TENTS

- Numbers on both sides
- TC125 and TC150 are also an oven safe solution for marking pizzas



| Item #          | Description                  | Min Order/<br>Case Pack |
|-----------------|------------------------------|-------------------------|
| STAINLESS STEEL |                              |                         |
| b. TC125        | Cut-Out Tents 1-25, 2½ x 2"  | 1 set / 8 sets          |
| TC150           | Cut-Out Tents 1-50, 2½ x 2½" | 1 set / 4 sets          |
| c. T150         | Numbers 1-50, 2½ x 2"        | 1 set / 4 sets          |



## BUFFET TENTS

- Color-code your buffet for allergen, vegetarian and vegan identification and more

| Item #          | Description           | Min Order/<br>Case Pack |
|-----------------|-----------------------|-------------------------|
| STAINLESS STEEL |                       |                         |
| d. B1           | Coffee, 2½ x 2"       | 1 ea / 25 ea            |
| e. B2           | Decaf, 2½ x 2"        | 1 ea / 25 ea            |
| f. B6           | Cream, 2½ x 2"        | 1 ea / 25 ea            |
| g. B5           | Milk, 2½ x 2"         | 1 ea / 25 ea            |
| B7              | Hot Water, 2½ x 2"    | 1 ea / 25 ea            |
| h. B17          | Card Holder, 2½ x 1¼" | 1 ea / 200 ea           |
| MELAMINE        |                       |                         |
| i. M10BK        | Black, 3½ x 2½ x 2"   | 1 ea / 12 ea            |
| j. M10PR        | Purple, 3½ x 2½ x 2"  | 1 ea / 12 ea            |
| k. M10GN        | Green, 3½ x 2½ x 2"   | 1 ea / 12 ea            |
| l. M10W         | White, 3½ x 2½ x 2"   | 1 ea / 12 ea            |
| PORCELAIN       |                       |                         |
| m. P16          | Plain, 3½ x 2"        | 1 ea / 6 ea             |

Melamine tents are square on one side and curved on the other. Flip them over to customize the look of your display.

