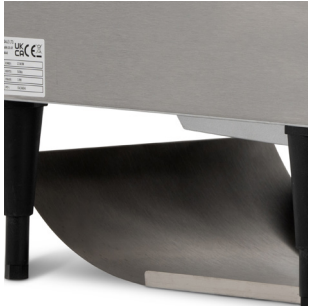


BCT2



STAINLESS STEEL CONVEYOR TOASTER

Description

With only a 25 second cycle time and space for 2 slices to fit side by side, you can keep the bread toasting going with approximately 360 slices per hour output on the BCT2. The speed and temperature can be adjusted dependant on your needs so you can be sure it can keep up with just about anything you throw at it.

Other features include front or rear chute options. 'V' shaped heat deflectors and a crumb tray making clean up even easier.

Features

- Stainless steel construction
- Adjustable speed control
- Front or rear chute options
- Removable crumb tray
- 'V' Shaped heat detectors
- Adjustable legs: 105 to 140mm
- Maximum approx 360 slices per hour output
- 25 second cycle time and takes 2 slices side by side



| MODEL | DIMENSIONS (mm) | POWER USAGE | POWER | WEIGHT (kg) |
|-------|--------------------|-------------|-------|-------------|
| BCT2 | H387 x W368 x D418 | 2240W | 13amp | 18 |