



# GAS STEAM “Do-All” COOKER WITH CABINET BASE



## SPECIFICATIONS:

Shall be a Crown model \_\_\_\_\_ pressure and pressureless compartment cooker with gas steam boiler. The cooker shall be constructed of all-welded satin finish stainless steel, type 304. The doors shall have a removable inner liner of aluminum plate with full perimeter gasket seal, an outer liner of one-piece all-welded stainless steel, and a wheel-and-screw closing mechanism. The doors, with a clear opening of 10-1/4" x 26-3/8", shall latch upon closing and shall open 15° upon latch release.

The lower compartment shall be a pressure cooker only and shall operate at a maximum pressure of 6 psi (41 kPa). The upper compartment shall be either a pressureless free venting cooker or a pressure cooker operating at a maximum of 6 psi (41 kPa), as selected by the operator.

The control housing shall be constructed of stainless steel with a full access removable panel. Each compartment shall have independent automatic timer controls with visual and audible signals. In the lower compartment and the pressure mode of the upper compartment, the controls automatically shut off and exhaust the incoming steam, drain the condensate from the compartment and sound a continuous signal until turned off manually. In the pressureless mode of the upper compartment, the controls shall also include a mode selector switch and a steam flow cut-off when the door is opened.

The compartment cooker shall be mounted on a cabinet base with full perimeter angle frame, reinforced counter and boiler mountings, gas boiler with controls, all stainless steel exterior, hinged doors and 6" (152 mm) stainless steel legs with 4 adjustable flanged feet for mounting to the floor. Water treatment system, automatic blow down, CSD-1 boiler controls, split water line, and electronic ignition come standard.

**\*SEE REVERSE SIDE OF SPEC SHEET FOR WATER TREATMENT SYSTEM STATEMENTS\***

MODEL	COMPARTMENTS	CAPACITY
GDA-2	2	8-16 Pans
GDA-3	3	12-24 Pans

## OPERATION SHALL BE BY:

Gas heated steam boiler operating at 9-11 psi (62-76 kPa) rated at 250,000 BTU.

The gas boiler shall be equipped for operation on:

- ☐ Natural gas
- ☐ Propane gas

The controls shall be equipped for operation on:

- ☐ 115 VAC, 1 Phase, 60 Hz

## STANDARD FEATURES:

- Water Treatment System
- Universal pan supports for each cooking compartment
- CSD-1 boiler controls
- Split water line
- Electronic ignition

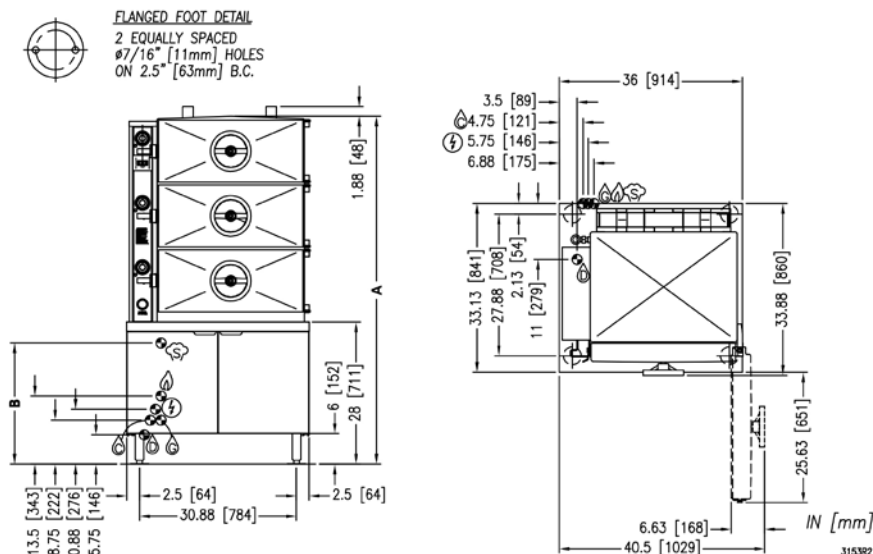
## OPTIONAL ITEMS AT EXTRA COST:

- ☐ 300,000 BTU boiler
- ☐ Stainless steel frame (SSF-)
- ☐ Stainless steel back on cabinet (SSB-)
- ☐ 220 or 240 VAC, 1 phase, 50 Hz
- ☐ Correctional package

## ACCESSORIES:

- ☐ Spray and rinse assembly
- ☐ Water in "Y" strainer
- ☐ Steam take-off kit
- ☐ Full width wire shelf
- ☐ Sheet pan support (SPS-PC)





Model	Units	A	B (250k BTU)	B (300k BTU)
GDA-2	in (mm)	55.75" (1416)	23.88" (606)	20.88" (530)
GDA-3	in (mm)	68.5" (1740)		

MODEL	BTU/HOUR	kW/HOUR	WATER COLUMN PRESSURE	
GDA-2 or GDA-3	250,000	73.33	Propane min. 11" (279 mm)	Natural min. 7" (178 mm)
	300,000	87.9		

#### SERVICE CONNECTIONS

- ⚡ – ELECTRICAL CONNECTIONS: 1/2" (13 mm) conduit connection to controls. 2 Amps per compartment, 120-60-1, 220-50-1.
- Ⓒ – GENERATOR WATER: 1/2" (13 mm) NPT at 25-50 PSI (170-345 kPa).
- Ⓓ – DRAIN: 2" (51 mm) IPS piped to open floor drain. No solid connection.
- Ⓔ – GAS CONNECTION: 3/4" (19 mm) IPS supply line required.
- Ⓒ – COLD WATER: 1/2" (13 mm) NPT at 25-50 PSI (170-345 kPa).
- Ⓔ – STEAM TAKE-OFF CONNECTION: 3/4" IPS optional to operate adjacent equipment.

#### WATER QUALITY STATEMENT

Water quality is the major factor affecting the performance of your appliance. If you are unsure of water quality, consult a local water treatment specialist and have the water analyzed. Your water supply must be within these general guidelines:

Total dissolved solids .....Less than 60 PPM  
Total alkalinity .....Less than 20 PPM  
Silica.....Less than 13 PPM  
Chlorine .....Less than 1.5 PPM  
pH Factor .....7.0 - 8.5

Water which fails to meet these standards should be treated by installation of water conditioner.

**FAILURE OR MALFUNCTION OF THIS APPLIANCE DUE TO POOR WATER QUALITY IS NOT COVERED UNDER WARRANTY. CONTACT CROWN FOR WATER QUALITY SOLUTIONS.**

**INTENDED FOR COMMERCIAL USE ONLY.  
NOT FOR HOUSEHOLD USE.**



70 Oakdale Road, Toronto ON, Canada M3N 1V9  
(919) 762-1000 www.crownsteamgroup.com