

490

Shake Freezer

Single Flavor

Features

Serve a wide variety of frozen beverages, like shakes and smoothies, with the assurance of safe temperatures for dairy products. Direct-draw a single flavor or blend in flavorings for more variety.

Freezing Cylinder

One, 7 quart (6.6 liter).

Mix Hopper

One, 20 quart (18.9 liter). Refrigerated to maintain mix below 41°F (5°C).

Indicator Lights

Add Mix light alerts the operator to add mix. When the Mix Out light flashes, the unit automatically shuts down to prevent damage.

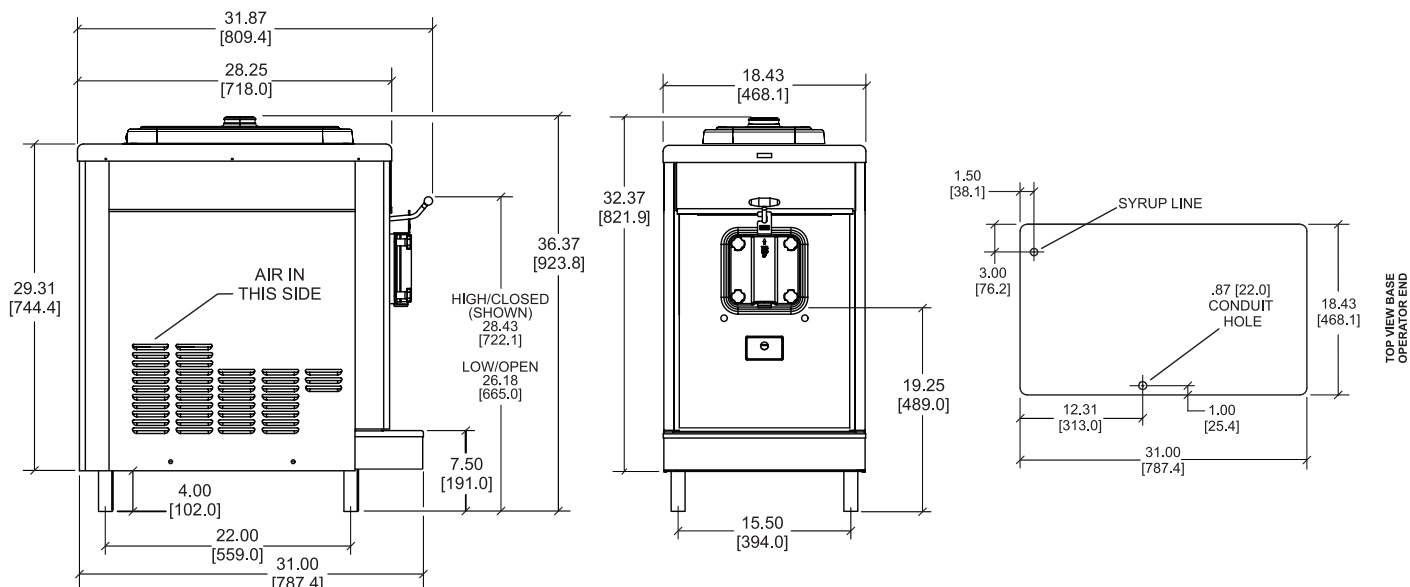
Electronic Viscosity Control

The electronic viscosity control continuously measures product viscosity and regulates operation of the refrigeration system.



Approval Mark Note:

The Approval marks shown below may not apply to every model configuration. Approvals may vary based on Voltage, Model Option and Accessory selection, please contact your local distributor for more information.



FIGURES IN BRACKETS INDICATE MILLIMETERS / DECIMAL AND FRACTIONAL DIMENSIONS EQUAL TO (PLUS OR MINUS 1/16 INCH [1.5mm]).

Weights	lbs.	kgs.
Net	280	127.1
Crated	317	143.8

*For reference only

	cu. ft.	cu. m.
Volume	17.73	0.49

Dimensions	in.	mm.
Width	18-7/16	468
Depth	31	787
Height	36-3/8	923.8
Counter Clearance	4-1/4	108

*Mounted on standard legs

Electrical	Maximum Fuse Size	Minimum Circuit Ampacity	Poles (P) Wires (W)
208-230/60/1 Air	15	12	2P 3W
208-230/60/1 Water	15	12	2P 3W
208-230/60/3 Air	15	9	3P 4W
220-240/50/1 Air	15	10	2P 3W

This unit may be manufactured with other electrical characteristics and may have additional regulatory agency approvals. Consult the local Taylor distributor for other electrical characteristics and agency approvals based on specific electrical and country requirements.

(For exact electrical information, approval marks, and refrigerant, always refer to the data label of the unit.)

Continuing research results in steady improvements; therefore, these specifications are subject to change without notice.

Bidding Specs

Electrical: Volt _____ Hz _____ ph _____
Neutral: ☐ Yes ☐ No Cooling: ☐ Air ☐ Water ☐ NA

Options:

All options may not be available in combination with others or with all electrical or cooling configurations. Please consult your local Taylor distributor.

Authorized Taylor Distributor

Specifications

Electrical

One dedicated electrical connection is required. See the electrical chart for the proper electrical requirements. Manufactured to be permanently connected. Consult your local Taylor distributor for cord and receptacle specifications as local codes allow.

Beater Motor

One, 0.5 hp.

Refrigeration System

One, 7,500 BTU/hr. R449A.
(BTUs may vary depending on compressor used.)

Air-Cooled

Minimum Clearance: 6" (152 mm) on both sides. It is recommended to place the rear of the unit against the wall to prevent recirculation of warm air. Minimum air clearances must be met to ensure adequate airflow for optimum performance.

Water-Cooled

Water inlet and drain connections underside of base 3/8" FPT.

Options

- Panel Spinner

Accessories

- Faucet
- Syrup Rail (side mount)



750 N. Blackhawk Blvd.
Rockton, Illinois 61072
www.taylor-company.com

048612-ADV

10/25