

HEAVY DUTY PORTABLE BARS WITH DOORS

w/ ALL STAINLESS STEEL BARTENDER SIDE

Designed For **HEAVY DUTY** Use

Item #: _____ Qty #: _____
Model #: _____
Project #: _____



FEATURES:

All stainless steel bartender side.
19" x 13-1/2" x 11" stainless steel insulated integral ice bin with cover. Complete with drain & shut-off valve.
Stainless steel speed rails.
Center stainless steel panel for extra support.
Hinged door with lock on left and right side of center support panel.
Full perimeter bumpers.
Four 5" heavy duty swivel casters (2 with brakes).
Bottom shelf for glass rack storage.
-7 Models Includes above features with additional 7-circuit post mix cold plate in right ice bin.

MATERIAL:

Top & Front: Mica laminate, black finish
Unit: Stainless steel work top, back, sides & bottom
Bartender Side: Stainless steel
Casters: Rubber
Speed Rails: Stainless steel

Standard Model #	Wt.	Cold Plate Model #	Wt.	Size L x W x H	Storage Cabinet Dim. L x W x H	# Of Speed Rails	Bottle Capacity Per Speed Rail (750ml Bottles)	Ice Capacity	Bar Top Width	Cu. Ft.
AMD-5B	423	AMD-5B-7	448	62 1/4" x 28 1/8" x 46 5/8"	57 7/8" x 23 3/4" x 15 1/2"	2	10	50 lbs.	12"	50
AMD-6B	464	AMD-6B-7	489	74 3/8" x 28 1/8" x 46 5/8"	69 7/8" x 23 3/4" x 15 1/2"	3	15	50 lbs.	12"	60

CUSTOM EXTERIOR OPTIONS

Applied To Portable Bar Front And Sides ONLY, Unless Otherwise Specified



-LMP

Marula Pine
Laminate



-LCW

Columbian Walnut
Laminate



-LCM

Calcutta Marble
Laminate



-SS

Stainless Steel Panels
(Includes Bar Top)



SU-81

Custom Laminate
Of Your Choice
Consult Factory For
Pricing & Details

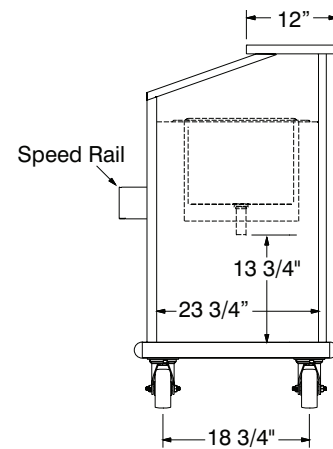
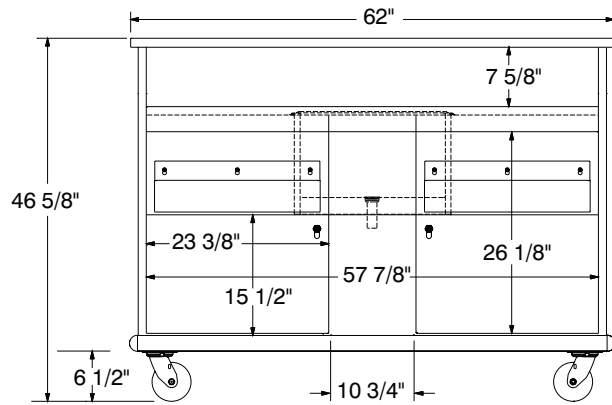
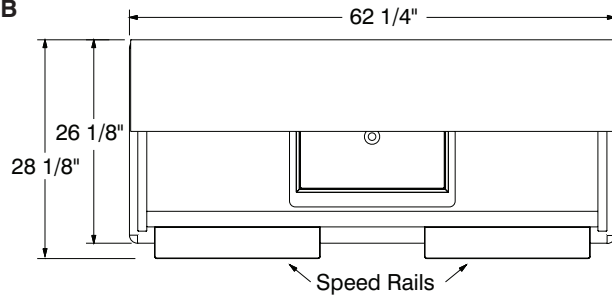
Add Model Number At End Of Portable Bar Model Number When Ordering (Example: R-8-B-LCW)

DIMENSIONS and SPECIFICATIONS

TOL $\pm .125"$

ALL DIMENSIONS ARE TYPICAL

AMD-5B



AMD-6B

