



## ANGLED RISERS

- Elevates bowls for dynamic and easily accessible serving line
- Made to fit standard wells

Item	Description	Min Order/ Case Pack
STAINLESS STEEL		
CW900	Full, Vertical, 13 x 21 x 2"	1 ea / 4 ea
a. CW900H	Full, Horizontal, 13 x 21 x 2"	1 ea / 4 ea

Available in Gurnee, IL 60031 & Willis, TX 77378

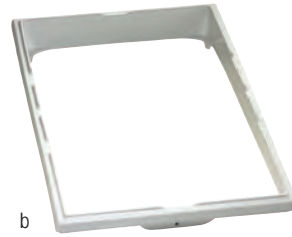
## ANGLED RISERS



Item	Description	Min Order/ Case Pack
CAST ALUMINUM		
b. CWARDG01_	Full, Vertical 13¼ x 21¼ x 2¼"	1 ea



a



b



**DURACOAT™**  
CAST COATINGS

FOR ANGLED RISER CWARDG01 ONLY  
COLOR SWATCHES ON PAGE 13



Custom sizes and designs available. Contact your TableCraft sales rep to learn more.



## VERSA-TILE CARVING STATION TEMPLATES™



- Stylish presentation for a variety of meats
- Durable, heat resistant (350° F) and detachable
- Perforated option available, for use with steam or water pan to trap juices for easier clean-up

Item #	Description	Min Order/ Case Pack
BLACK-RICHLITE		
CW6434BK	Solid, Double—27 x 21½ x 1½"	1 ea
CW6436BK	Perforated, Double—27 x 21½ x 1½"	1 ea
c. CW6430BK	Solid, Single—21½ x 13½ x 1½"	1 ea
d. CW6432BK	Perforated, Single—21½ x 13½ x 1½"	1 ea
NATURAL-RICHLITE		
CW6434N	Solid, Double—27 x 21½ x 1½"	1 ea
CW6436N	Perforated, Double—27 x 21½ x 1½"	1 ea
e. CW6430N	Solid, Single—21½ x 13½ x 1½"	1 ea
f. CW6432N	Perforated, Single—21½ x 13½ x 1½"	1 ea



c



d



e



f