

DynaStar® HH-E

High Temperature Sanitizing
Door-type Dishwasher

Standard Features

- ▶ Dual certified as both a dishwasher and a potwasher at all cycle settings
- ▶ Built-in 40-70 °F rise booster heater with Sani-Sure™ final rinse system ensures proper rinse water temperature
- ▶ Adjustable rinse system
 - Econo uses 0.72 gallons per rack
 - Turbo uses 0.89 gallons per rack
- ▶ Pumped rinse for consistent rinse pressure
- ▶ Automatic tank fill
- ▶ Door-actuated start
- ▶ Three (3) selectable timed cycles
- ▶ Digital LED display
- ▶ Onboard service diagnostics
- ▶ Delime cycle
- ▶ 27" (686 mm) vertical chamber clearance
- ▶ Triple wash arm system provides consistent and reliable washing performance
- ▶ Specially designed stainless steel nozzles provide superior cleaning action
- ▶ 2 HP stainless steel wash pump motor
- ▶ Vent fan control shuts vent fan off when machine is idle
- ▶ Interchangeable scrap baskets
- ▶ Single point connections for all utilities
- ▶ Field convertible from straight through to corner and vice versa (kit required)
- ▶ Field convertible from 3-phase to single phase and vice versa (kit required)
- ▶ Low watt density electric wash tank heater
- ▶ Hi-limit thermostat and low water protection
- ▶ Detergent/rinse additive signal connection fuse box
- ▶ Front and side stainless steel dress panels
- ▶ Adjustable bullet feet
- ▶ Durable stainless steel construction



Specification Statement

Specified unit will be a Jackson DynaStar HH-E tall chamber, high temperature sanitizing door-type dishwasher, rated to NSF/ANSI Standard 3 by ETL Sanitation. Unit will be ENERGY STAR® certified and will be dual certified as both a dishwasher and a potwasher on all cycle settings. Unit to be rated for 62 racks per hour, 0.72 gallons per rack, and will include a built-in 40-70 °F rise booster heater with Sani-Sure™ final rinse system, three (3) selectable timed cycles, solid-state controls with digital LED temperature/operator display and service diagnostics. Unit will have an adjustable rinse system, Econo Rinse uses 0.72 gallons per rack; Turbo Rinse uses 0.89 gallons per rack. Other features include automatic tank fill, delime cycle, triple wash arm system, pumped final rinse, vent fan control, and 2 HP stainless steel wash pump motor. Constructed of durable stainless steel with adjustable bullet feet.

1-year parts and labor warranty.

Options & Accessories

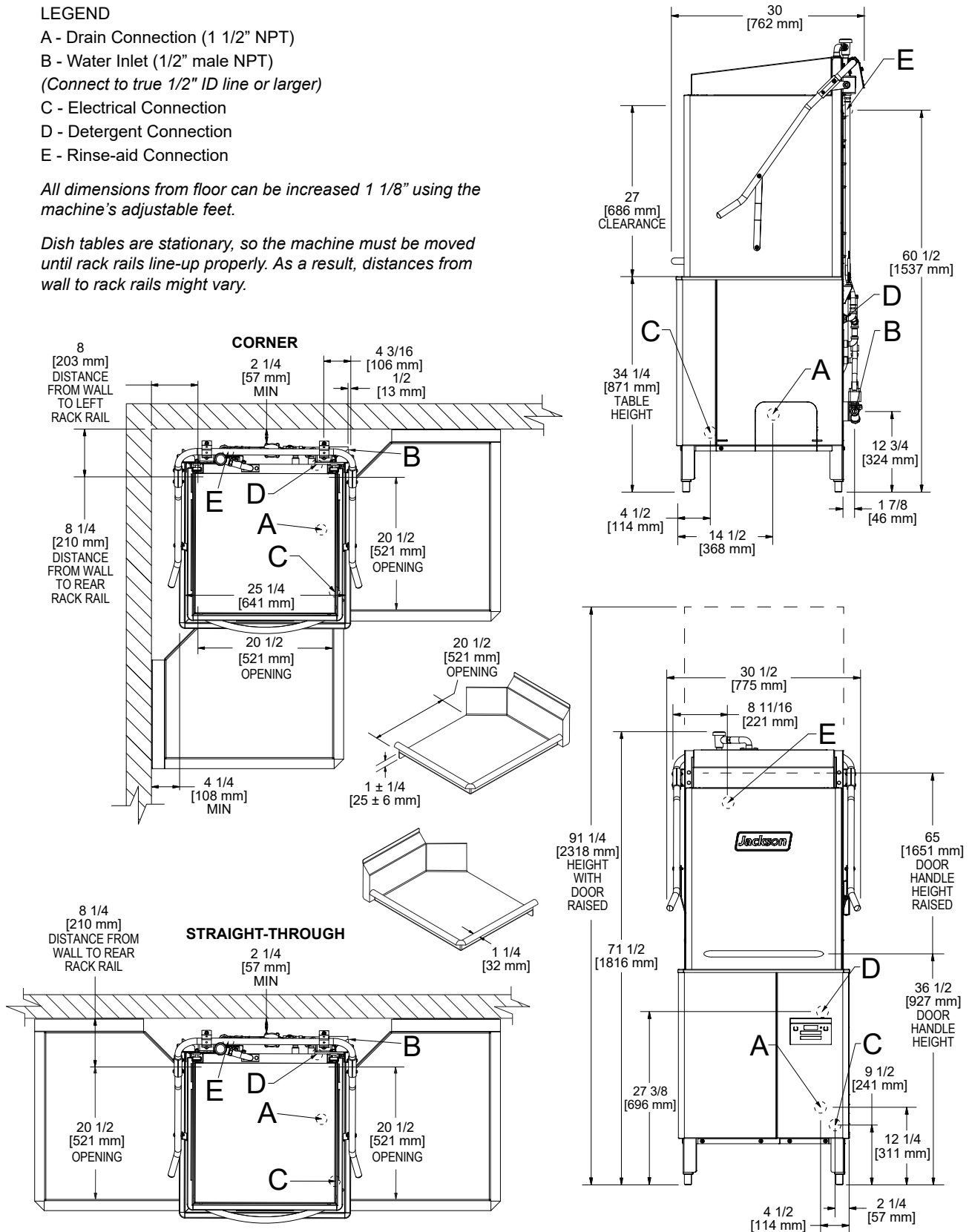
- ▶ 460V Electrical
- ▶ Single Phase
- ▶ Dual Point Connection
- ▶ Drain Water Tempering Kit
- ▶ Water Hammer Arrestor
- ▶ Door Interlock
- ▶ False Panel (for corner installations)
- ▶ Flanged Feet
- ▶ Security Package
- ▶ Scallrol
- ▶ Replacement Cartridge for Scallrol
- ▶ 36-Compartment Rack
 - 4-1/8" tall (105 mm)
 - 5-5/8" tall (143 mm)
 - 7" tall (178 mm)
- ▶ Combination Rack
- ▶ Peg Rack

LEGEND

- A - Drain Connection (1 1/2" NPT)
- B - Water Inlet (1/2" male NPT)
(Connect to true 1/2" ID line or larger)
- C - Electrical Connection
- D - Detergent Connection
- E - Rinse-aid Connection

All dimensions from floor can be increased 1 1/8" using the machine's adjustable feet.

Dish tables are stationary, so the machine must be moved until rack rails line-up properly. As a result, distances from wall to rack rails might vary.



Operating Capacity (Cycle I)

| | |
|------------------|----------|
| Racks per Hour | 62 (57)* |
| Dishes per Hour | 1,550 |
| Glasses per Hour | 2,232 |

Operating Temperature

| | |
|-----------------------------|--------------|
| Wash Temperature (minimum) | 150 °F/66 °C |
| Rinse Temperature (minimum) | 180 °F/82 °C |

Operating Cycle (seconds)

| | Wash | Rinse | Dwell | Total Cycle |
|-----------|------|-------|-------|-------------|
| Cycle I | 40 | 11 | 07 | 58 |
| Cycle II | 90 | 11 | 07 | 108 |
| Cycle III | 220 | 11 | 07 | 238 |

Water Consumption

| | |
|----------------------------------|-----------------|
| Gallons per Rack (Econo rinse) | 0.72 (2.7 L) |
| Gallons per Rack (Turbo rinse) | 0.89 (3.4 L) |
| Gallons per Hour (Econo rinse) | 44.64 (169.0 L) |
| Gallons per Hour (Econo rinse)** | 41.04 (155.4 L) |
| Gallons per Hour (Turbo rinse) | 55.18 (208.9 L) |
| Gallons per Hour (Turbo rinse)** | 50.73 (192.0 L) |
| Wash Tank Capacity (gallons) | 8.00 (30.3 L) |
| Booster Tank Capacity (gallons) | 1.66 (6.3 L) |

Water Requirements

| | |
|---------------------------------|--------------|
| Incoming Water Temperature | 110 °F/43 °C |
| Flow Pressure (PSI) | |
| DynaStar HH-E | 15-65 |
| DynaStar HH-E W/O (no booster) | 10 ± 2 |
| Incoming Water Connection (NPT) | 1/2" |
| Drain Connection (NPT) | 1 1/2" |

Electrical Specifications

| | |
|------------------------|------|
| Wash Pump Motor (HP) | |
| 208V | 2 |
| 230V | 2 |
| 460V | 2 |
| Wash Tank Heater (kW) | |
| 208V | 4.1 |
| 230V | 5.2 |
| 460V | 5.0 |
| Rinse Tank Heater (kW) | |
| 208V | 9.0 |
| 230V | 11.2 |
| 460V | 9.2 |

Dimensions

| | |
|---------------------------------|-------------------|
| Width | 30 1/2" (775 mm) |
| Depth | 30" (762 mm) |
| Height | 71 1/2" (1816 mm) |
| Height with Door Open | 91 1/4" (2318 mm) |
| Inside Clearance Height | 27" (686 mm) |
| Wall Clearance | 6" (152 mm) |
| Rear | 2 1/4" (57 mm) |
| Left Side (corner installation) | 4 1/4" (108 mm) |
| Drain Height | 12 1/4" (311 mm) |

Shipping Details

| | |
|-----------------|------------------|
| Shipping Weight | 366 lbs (166 kg) |
| Shipping Width | 33" (838 mm) |
| Shipping Depth | 42" (1067 mm) |
| Shipping Height | 77" (1956 mm) |
| Shipping Cube | 61.76 cu ft |
| Shipping Class | 200 |

*Racks per hour calculated with NSF suggested load time of :05 for door-type (straight thru) dishmachines.

**Gallons per hour calculated with NSF suggested load time of :05 for door-type (straight thru) dishmachines.

Single Point Connection

| Power Supply | Total Load | Minimum Circuit Ampacity | Maximum Overcurrent Protection |
|--------------------------------|------------|--------------------------|--------------------------------|
| WITH BOOSTER (STANDARD) | | | |
| 208/60/3 | 49.3 A | 52.3 A | 60.0 A |
| 230/60/3 | 52.9 A | 55.6 A | 60.0 A |
| 460/60/3 | 21.4 A | 22.1 A | 25.0 A |
| 208/60/1 | 75.9 A | 78.9 A | 90.0 A |
| 230/60/1 | 83.0 A | 85.8 A | 90.0 A |
| WITH NO BOOSTER | | | |
| 208/60/3 | 23.5 A | 26.5 A | 35.0 A |
| 230/30/3 | 24.0 A | 26.7 A | 35.0 A |
| 460/60/3 | 9.1 A | 9.8 A | 15.0 A |
| 208/60/1 | 31.8 A | 34.8 A | 45.0 A |
| 230/60/1 | 33.6 A | 36.3 A | 45.0 A |

Dual Point Connection

| Power Supply | Total Load | Minimum Circuit Ampacity | Maximum Overcurrent Protection |
|--------------------------------|------------|--------------------------|--------------------------------|
| WITH BOOSTER (STANDARD) | | | |
| 208/60/3 TB1 ¹ | 24.3 A | 27.3 A | 35.0 A |
| 208/60/3 TB2 ² | 25.0 A | 26.3 A | 30.0 A |
| 230/60/3 TB1 ¹ | 24.8 A | 27.5 A | 35.0 A |
| 230/60/3 TB2 ² | 28.1 A | 29.3 A | 30.0 A |
| 460/60/3 TB1 ¹ | 9.9 A | 10.6 A | 15.0 A |
| 460/60/3 TB2 ² | 11.5 A | 12.8 A | 15.0 A |
| 208/60/1 TB1 ¹ | 32.6 A | 35.6 A | 45.0 A |
| 208/60/1 TB2 ² | 43.3 A | 44.6 A | 45.0 A |
| 230/60/1 TB1 ¹ | 34.4 A | 37.1 A | 45.0 A |
| 230/60/1 TB2 ² | 48.6 A | 49.9 A | 50.0 A |

¹TB1 - Wash pump motor, rinse pump motor and wash tank heater
²TB2 - Rinse tank heater

Advisory: Jackson WWS, Inc. DOES NOT endorse "Tankless On-Demand" water heaters for use with our dishmachines. Jackson WWS, Inc. DOES endorse, and highly recommends, standard "tank" style water heaters, sized to properly handle the water heating requirements of the facility.

Because the DynaStar HH-E is equipped with a pumped rinse, a PRV is not required unless flow pressure is over 65 PSI. Flow pressure under 15 PSI could affect fill/start-up time. DynaStar HH-E W/O (no booster) is not equipped with a rinse pump, so a PRV is recommended and flow pressure is 10 ± 2 PSI.

CONTACT JACKSON

07610-005-02-64 [08/18/25]

Address
6209 N U.S. Highway 25E
Gray, Kentucky 40734

Telephone & Fax
T 888.800.5672
F 606.523.1799

Website
www.jacksonwws.com

Email
customer.service@jacksonwws.com

