



Model: \_\_\_\_\_ Item #: \_\_\_\_\_ Date: \_\_\_\_\_  
Project: \_\_\_\_\_ Qty: \_\_\_\_\_ Approved By: \_\_\_\_\_

## Royal Series One Compartment Bar Sinks

## Royal Series Underbar



KR19-31C

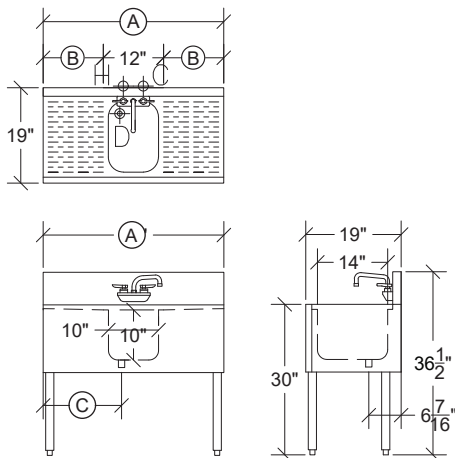
### Standard Features

- Royal Series faucets & drains w/ overflows included
- Models ending '-E' include electronic sensor faucets
- 1-1/2" left rear corner drains (Model 23-122)

### Specifications

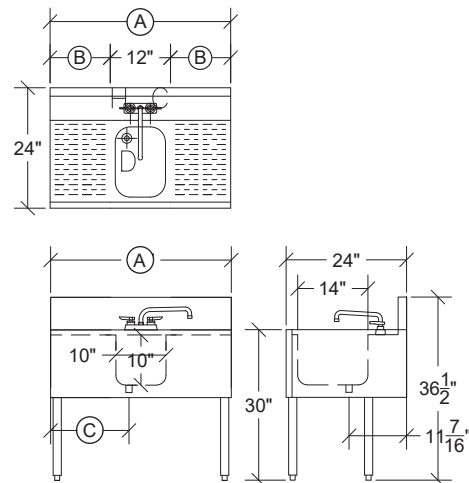
Sink Bowl	▪ 20 gauge stainless steel 10" x 14" x 10" deep
	▪ Furnished with 1-1/2" IPS rear corner drain and 7-1/2" overflow pipe
Drainboard	▪ 20 gauge stainless steel reinforced with welded braces every 6"
Front Apron	▪ 20 gauge stainless steel clad over 20 gauge galvanized steel
Sides	▪ 20 gauge stainless steel
Backsplash	▪ 20 gauge stainless steel
Back & Bottom	▪ 20 gauge galvanized steel
Legs	▪ 1-5/8" tubular 16 gauge stainless steel with grey plastic bullet foot
Plumbing	▪ Hot/Cold Water: 1/2" IPS ▪ Drain: 1-1/2" IPS
Faucets	▪ KR19-1C, KR19-31C, KR24-1C include Royal Series 4" Center Wall Mount Faucet
	▪ KR24-31C include Royal Series 4" Center Deck Mount Faucet
	▪ KR19-1C-E, KR24-1C-E include 4" Center Wall Mount Electronic Sensor Faucet

Model	Depth (Front to Back)	Length (A)	Drainboard Size		Left Side to Drain (C)	Bowls	Bowl Location	Wgt. (lbs.)
			(B)	(B)				
KR19-1C	19"	12"	-	6"	1	Center	40	
KR19-1C-E	19"	12"	-	6"	1	Center	40	
KR19-31C	19"	36"	(2) 12"	16"	1	Center	48	



**NOTE:** Letter at end of Model Number represents Bowl Location

Model	Depth (Front to Back)	Length (A)	Drainboard Size		Left Side to Drain (C)	Bowls	Bowl Location	Wgt. (lbs.)
			(B)	(B)				
KR24-1C	24"	12"	-	6"	1	Center	45	
KR24-1C-E	24"	12"	-	6"	1	Center	45	
KR24-31C	24"	36"	(2) 12"	16"	1	Center	53	



**WARNING:** Plumbing connections should be made by qualified personnel who will observe all applicable plumbing, sanitary and safety codes.

