



TWO COMPARTMENT, 16 PAN, CONVECTION STEAMER ON 36" CABINET BASE WITH ELECTRIC BOILER



SPECIFICATIONS:

Shall be a Crown model **ECX-16** convection steamer with electric steam boiler. The steamer shall be constructed of satin finish stainless steel, type 304, with a cooking chamber of one piece all welded 316 stainless steel. The doors shall have a removable inner liner of stainless steel with full perimeter gasket seal, an outer liner of one-piece all welded stainless steel and a positive lock and seal mechanism. The door opening shall be 14" x 26.5" (356 x 673mm).

The steamer shall be provided with removable stainless steel pan supports and a stainless steel drip trough connected to drain to collect condensate when door is opened.

The control housing shall be constructed of stainless steel with a full access removable panel. The timing of each cooking compartment shall be independently controlled by a "60" minute timer, a green ready pilot light and a red cook pilot light. At the end of the cooking cycle an audible signal is sounded. Steam flow to the cooking chamber shall be interrupted when the door is opened during the cooking cycle and shall be reactivated when the door is closed.

The convection steamer shall be mounted on a cabinet base with full perimeter angle frame, reinforced counter, and boiler mountings, nickel plating, electric boiler with controls, all stainless steel exterior, hinged doors and 6" (152 mm) stainless steel legs with 4 adjustable flanged feet for securing to the floor.

SEE REVERSE SIDE OF SPEC SHEET FOR WATER TREATMENT SYSTEM STATEMENTS

COMPARTMENT PAN CAPACITY PER COMPARTMENT					
MODEL	PAN DEPTH				
	1"	2-1/2"	4"	4" & 1"	4" & 2-1/2"
ECX-16	16	8	4	2 x 4" 2 x 1"	2 x 4" 1 x 2-1/2"

OPERATION SHALL BE BY:

Electrically heated steam boiler operating at 9-11 psi (62-76k Pa) and rated at:

☐ 42.0 kw (standard)

The steam boiler shall be equipped for operation on:

☐ 208 VAC, 3 Phase, 60 Hz (not available in 48 kw)

☐ 240 VAC, 3 Phase, 60 Hz

STANDARD FEATURES:

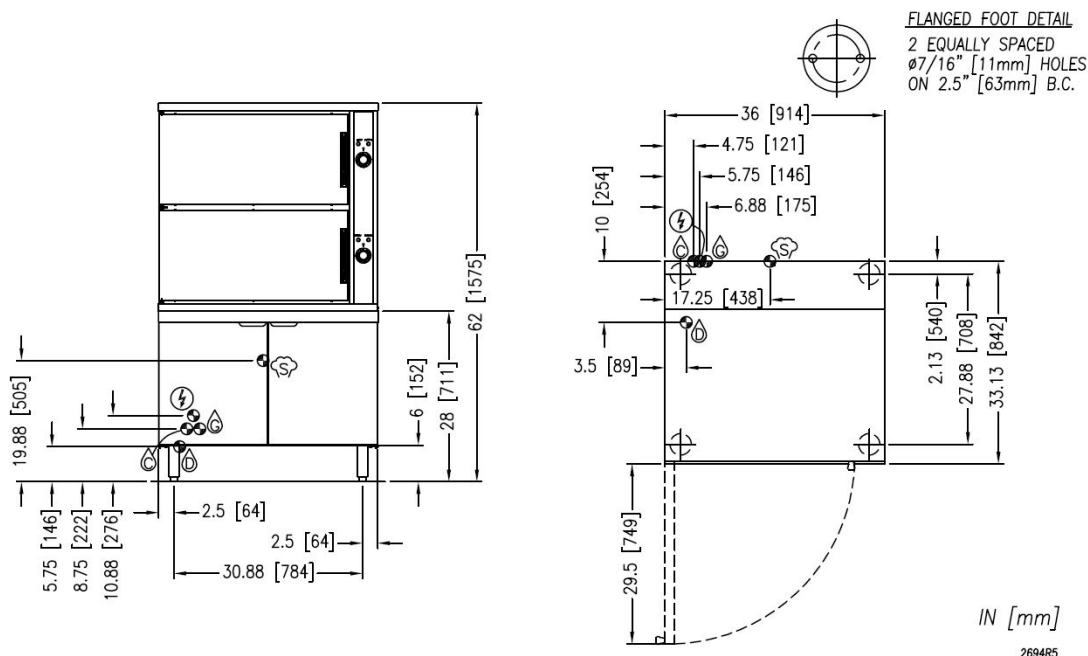
- Water Treatment System
- Automatic boiler blowdown
- Split water lines (boiler feed and condensate)
- CSD-1 boiler controls

OPTIONAL ITEMS AT EXTRA COST:

- ☐ 48.0 kw (240 volt min)
- ☐ Stainless steel frame (SSF-)
- ☐ Stainless steel back on cabinet (SSB-)
- ☐ 380 VAC, 3 Phase, 50 Hz
- ☐ 415 VAC, 3 Phase, 50 Hz
- ☐ 480 VAC, 3 Phase, 50 Hz
- ☐ 575 or 600 VAC, 3 Phase, 60 Hz (EBVS-3)
- ☐ Load compensate timer (LCT)
- ☐ Sheet pan support (SPS-1 or SPS-2)
- ☐ Full width wire shelf (CXSS-16 must order SPS)
- ☐ Spray and rinse assembly
- ☐ Steam take-off kit (STOK)
- ☐ Water in "Y" strainer (condenser feed)



MODEL	SHIPPING WEIGHT (36" CABINET)	MINIMUM CLEARANCE	
		SIDES BACK	0 0
ECX-16	900 lbs. [408 kg]		

**SERVICE CONNECTIONS**

- ⚡ – ELECTRICAL CONNECTION: Field wiring electrical connection to be as specified on data plate.
- Ⓒ – GENERATOR: COLD WATER: 3/8" (10 mm) O.D. tubing at 25-50 psi (170-345 kPa).
- Ⓒ – CONDENSATE: COLD WATER: 3/8" (10 mm) O.D. tubing at 25-50 psi (170-345 kPa).
- Ⓓ – DRAIN: 2" (51 mm) IPS piped to open floor drain. No solid connection.
- Ⓔ – STEAM TAKE-OFF CONNECTION: 3/4" (19 mm) IPS optional to operate adjacent equipment.

ELECTRICAL CHARACTERISTICS

MODEL	PHASE	kW	208V	220V	240V	380V	415V	480V
			AMPS	AMPS	AMPS	AMPS	AMPS	AMPS
ECX-16	3	42 (Standard)	116.6	110.2	101	63.8	58.4	50.5
	3	48 (Optional)	-	-	115.8	72.9	66.8	57.8

WATER QUALITY STATEMENT

Water is the essential ingredient in steam equipment, water quality is the major factor affecting the performance of your appliance. Crown Steam Group offers a Comprehensive Water Treatment System which exceeds our minimum water requirements. Proof of installation and proper cartridges replacement is required for warranty coverage. Water supply to Crown Steam Group steamers must be within these guidelines.

Total dissolved solids.....Less than 60 PPM
 Total alkalinityLess than 20 PPM
 Silica.....Less than 13 PPM
 ChlorineLess than 1.5 PPM
 pH Factor6.8 - 7.3

Water which does not meet these standards should be treated with the installation of Middleby's Water Treatment System. Call 919-762-1000 if you have questions concerning your water meeting these parameters.

*Failure or malfunction of this appliance due to poor water quality is not covered under warranty.

Reference www.crownsteamgroup.com for complete warranty details and instructions.

**INTENDED FOR COMMERCIAL USE ONLY.
NOT FOR HOUSEHOLD USE.**



70 Oakdale Road, Toronto ON, Canada M3N 1V9
 (919) 762-1000 www.crownsteamgroup.com