

Specification/Data sheet

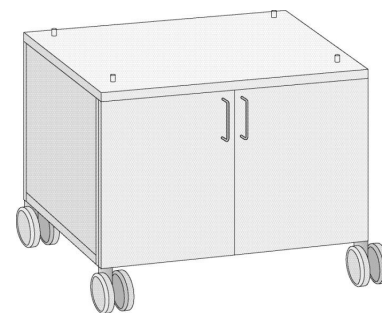
Cabinet US 4 type 61/101 - Mobile



Article number: 60.30.345

Description

- Mobile cabinet closed on all sides (hygiene version)
- 14 Rails
- Rail distance 65 mm
- Free space from lowest rack to the bottom plate 57 mm
- Top panel, intermediate bottom, deep-drawn shelf rests
- Adjustable feet
- Deep-drawn beaded side panels
- Hinged doors
- Weight 45 kg
- 845(33-1/4) mm(inch)W x 780(30-3/4) mm(inch)D x 676(26-5/8) mm(inch)H



Difference to standard

- 4 Tandem steering casters (2 with brake - metal parts CNS)
- Stand for units SelfCookingCenter® 61/101 with option integrated fat drain

Capacity (GN-container/grids)

- 1/1 GN Grid x 14
- 1/1 Baking trays/grids x 14
- 1/1 Baking tray, Aluminium perforated x 14
- 1/1 GN 20 mm deep x 14
- 1/1 GN 40 mm deep x 14
- 1/1 GN 65 mm deep x 13
- 1/1 GN 100 mm deep x 8
- Use of other containers 1/3 GN, 1/2 GN, steam pans 12" x 20", hotel pans 13" x 18" (2/3 GN, 1/4 GN crosswise)

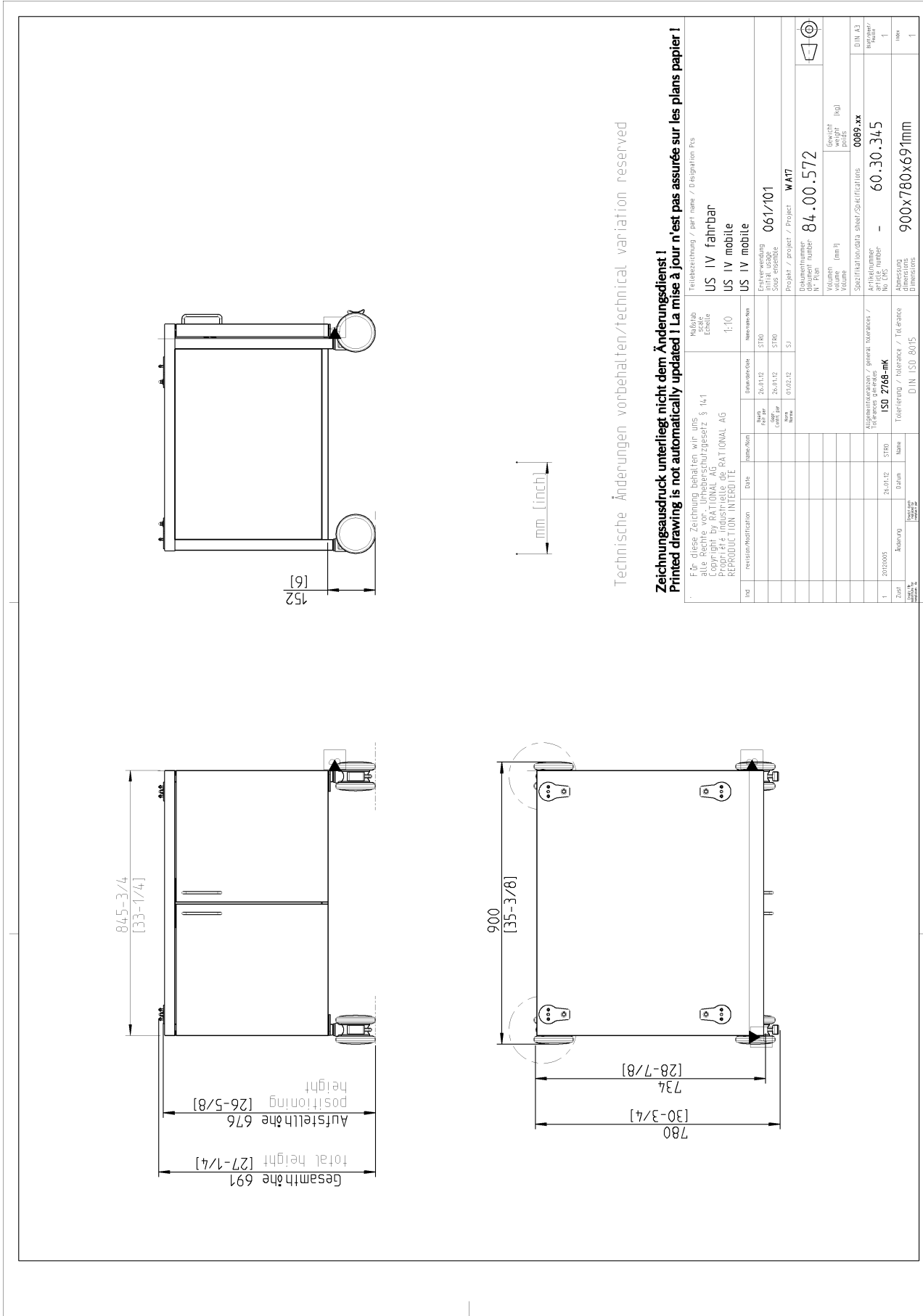
Material

- CNS 1.4301 (CNS 304)

Hint

- To be delivered with fastening kit for mounting the unit on the US 4

Specification/Data sheet
Cabinet US 4 type 61/101 - Mobile



Technische Änderungen vorbehalten/technical variation reserved

Zeichnungsausdruck unterliegt nicht dem Änderungsdienst!
Printed drawing is not automatically updated! La mise à jour n'est pas assurée sur les plans papier!

Für diese Zeichnung behalten wir uns alle Rechte vor. Urheberrechtsgesetz § 14 I Copyright by RATIONAL AG. Reproduktion ist ohne schriftliche Genehmigung von RATIONAL AG. REPRODUCTION INTERDITE		Teilbezeichnung / part name / Désignation Pcs US IV fahrbar US IV mobile US IV mobile	
Maßstab Eckseite 1:10		Projekt / project / Project 061/101	
Date		Erstverwendung document number 061/101	
Revision/Modification		Sous-ébauche	
Name		Project / project / Project WAT7	
Date		Dokumentnummer document number 84.00.572	
Author		Volumen Volume 1	
Date		Gewicht weight 0089,00 kg	
Drawing		Spezifikation/Spec sheet/Specifications 0089,00	
Drawing		Artikelnummer article number 60.30.345	
Drawing		Abmessung Dimensions 900x780x691mm	
Drawing		DIN A3 format 1	
Drawing		DIN A3 format 1	