



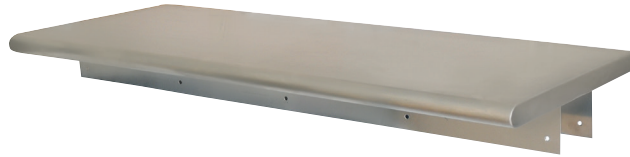
RESOURCES

Pass Through Shelves

Stainless Steel Shelving



Use your smart phone to scan the above QR code to visit our website:
www.bk-resources.com



Certifications:



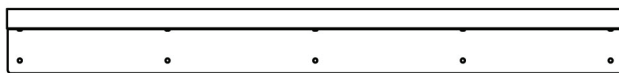
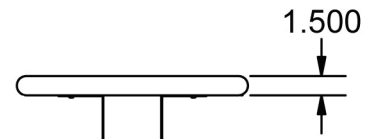
Features:

- Creates an easy access from kitchen to server area
- Ready to install with wall mounting brackets and hardware

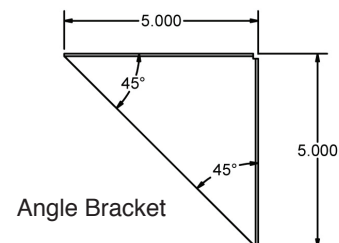
Material:

- T-304 16 ga. Stainless Steel Top

Part Number	Overall Size: (l x w)	Maximum Wall Thickness	Included Brackets
PTS-1824	24" X 18"	5"	2 L-Brackets
PTS-1836	36" X 18"	5"	2 L-Brackets
PTS-1848	48" x 18"	5"	2 L-Brackets
PTS-1860	60" x 18"	5"	2 L-Brackets
PTS-1872	72" x 18"	5"	2 L-Brackets
PTS-1896	96" x 18"	5"	2 L-Brackets
PTS-18108	108" x 18	5"	2 L-Brackets
PTS-18120	120" x 18	5"	2 L-Brackets
PTS-2424	24" X 24"	8"	4 Angle Brackets
PTS-2436	36" X 24"	8"	4 Angle Brackets
PTS-2448	48" x 24"	8"	4 Angle Brackets
PTS-2460	60" x 24"	8"	4 Angle Brackets
PTS-2472	72" x 24"	8"	6 Angle Brackets
PTS-2496	96" x 24"	8"	6 Angle Brackets
PTS-24108	108" x 18	8"	6 Angle Brackets
PTS-24120	120" x 18	8"	6 Angle Brackets



L-Bracket



Angle Bracket

PRODUCT DATA SHEET

RESOURCES

