



“WE MAKE THE KITCHEN BETTER!”

ATOSA USA, INC.

Toll Free: 855-855-0399 Email: info@atosausa.com

www.atosa.com | www.atosausa.com

California, Colorado, Florida, Georgia, Illinois, New Jersey, Ohio, Texas, Washington

22” Ice Machines

Standard Features

- Up to 350/450/600 lb production ice machines (per 24 hrs)
- Durable stainless steel exterior
- Digital Control
- Air cooled condenser
- Requires use of a drain
- NSF and ETL listed
- Removable air filter
- Screwless front panel
- Ice dimension: 3/8”x 7/8” x 7/8”
- Self-contained
- R290 refrigerant
- **Includes 3M water filter system standard**

Optional Accessories

- Bin thermostat kit part #: BYR0400217001
- Bin adaptor for 22” head to 30” bin part #: BYR0400235001

Maintenance and cleaning are not covered under warranty

All Atosa Ice machines should have the included 3M water filter system & cartridge installed. Recommended 3M cartridge replacement is recommended every 6 months. (may vary based on water quality)

Half-diced cube

Inlet hose

Drain hose



1. Don't forget to leave the unit some room to breathe!
2. Please clean the condenser frequently to give the unit more fresh air.



2 YEAR PARTS AND LABOR WARRANTY
5 YEAR COMPRESSOR PART WARRANTY

MODELS:

YRS0350A-161 / YRS0450A-161 / YRS0600A-261



YRS0350A-161



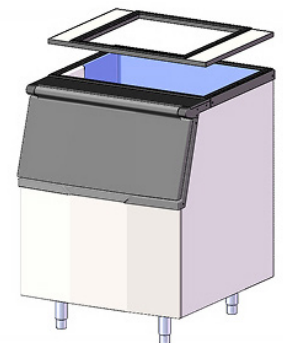
YRS0450A-161



YRS0600A-261



Bin thermostat kit



Bin adaptor

Bin thermostat kit: Monitors ice bin temperature to detect full ice condition and automatically stop ice production, preventing overflow, protecting the refrigeration system, and improving energy efficiency.





"WE MAKE THE KITCHEN BETTER!"

ATOSA USA, INC.

Toll Free: 855-855-0399 Email: info@atosausa.com

www.atosa.com | www.atosausa.com

California, Colorado, Florida, Georgia, Illinois,

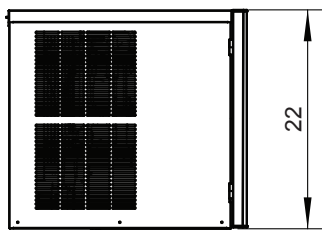
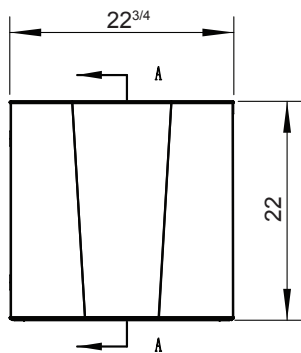
New Jersey, Ohio, Texas, Washington

SPECIFICATIONS

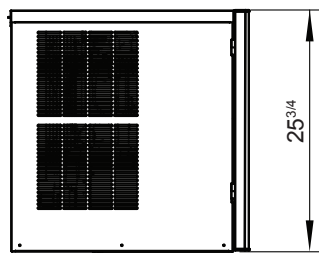
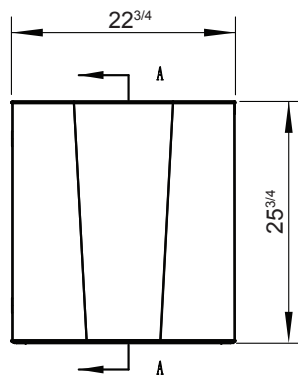
Model	Type	Refrigerant	Voltage (V/Hz/Ph)	Rated Current (A)	Power (W)	Plug	Ice-making Capacity (lb/hr)	Exterior Dimensions (inch)	Net Weight (lb)
YRS0350A-161	1/2 Cube ice	R290	115/60/1	10.6	1000	NEMA 5-15P	350/24	22 ^{3/4} × 24 ^{1/4} × 22	88
YRS0450A-161	1/2 Cube ice	R290	115/60/1	11.9	1150	NEMA 5-15P	450/24	22 ^{3/4} × 24 ^{1/4} × 25 ^{3/4}	106
YRS0600A-261	1/2 Cube ice	R290	208-230/60/1	6.8	1500	NEMA 6-20P	600/24	22 ^{3/4} × 24 ^{1/4} × 31 ^{3/4}	128

PLAN VIEW

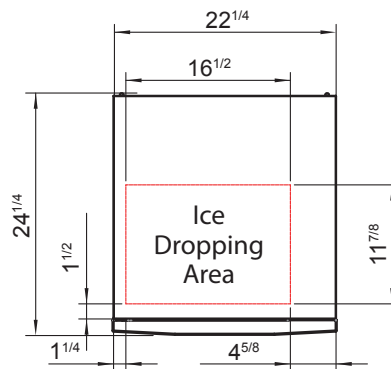
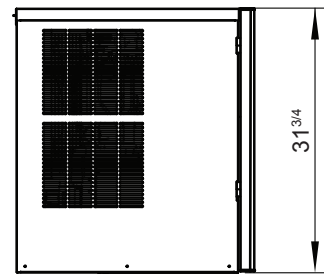
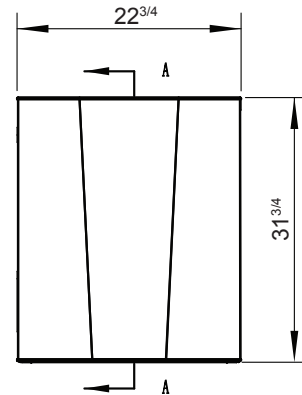
YRS0350A-161



YRS0450A-161



YRS0600A-261



Bottom View

